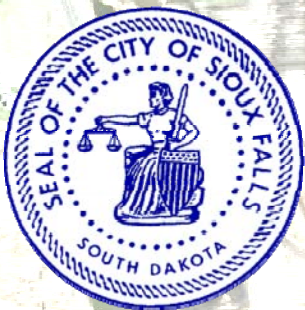
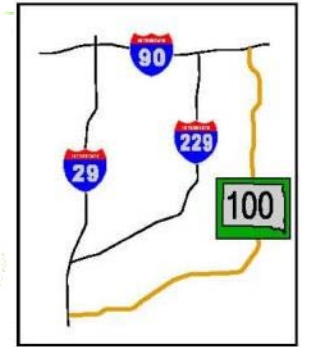


South Dakota 100 – Southern Segment: I-29 to 26th Street

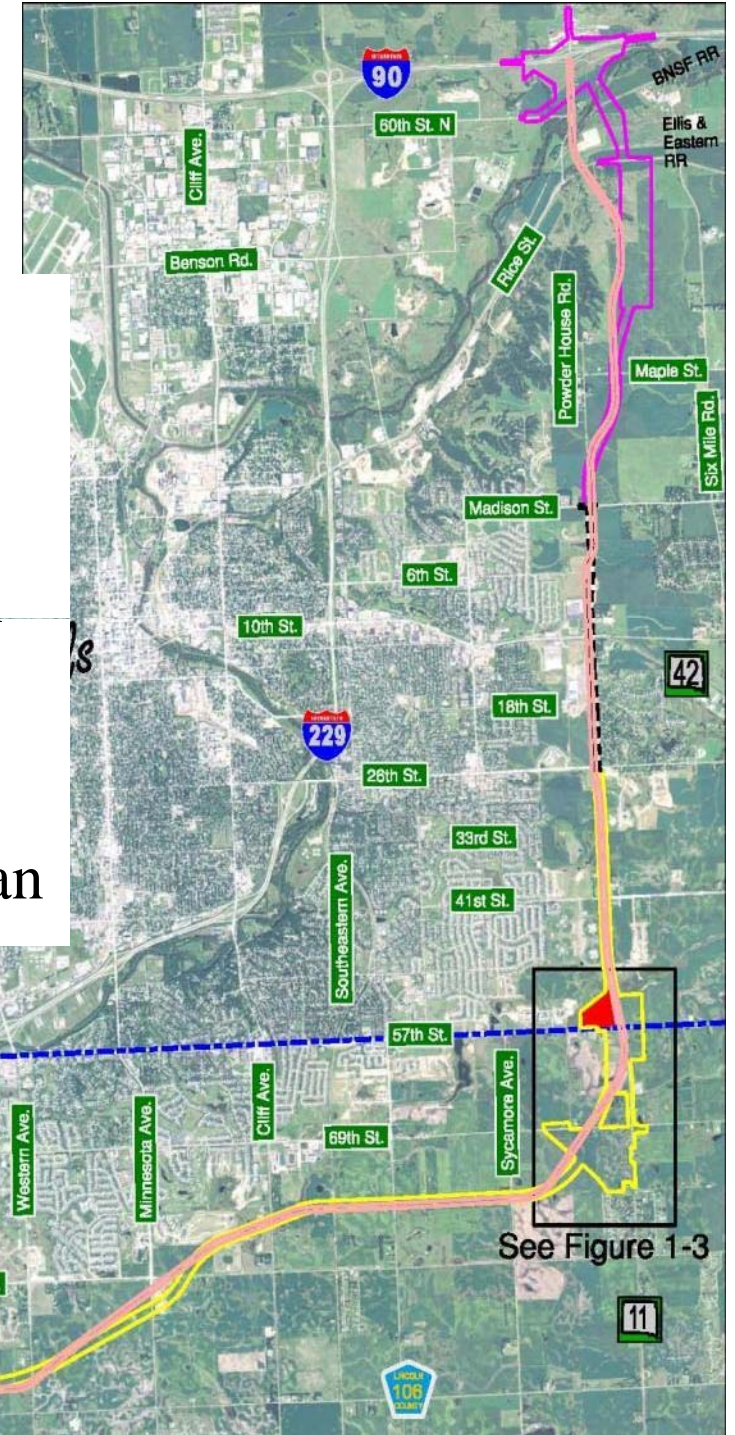


HDR



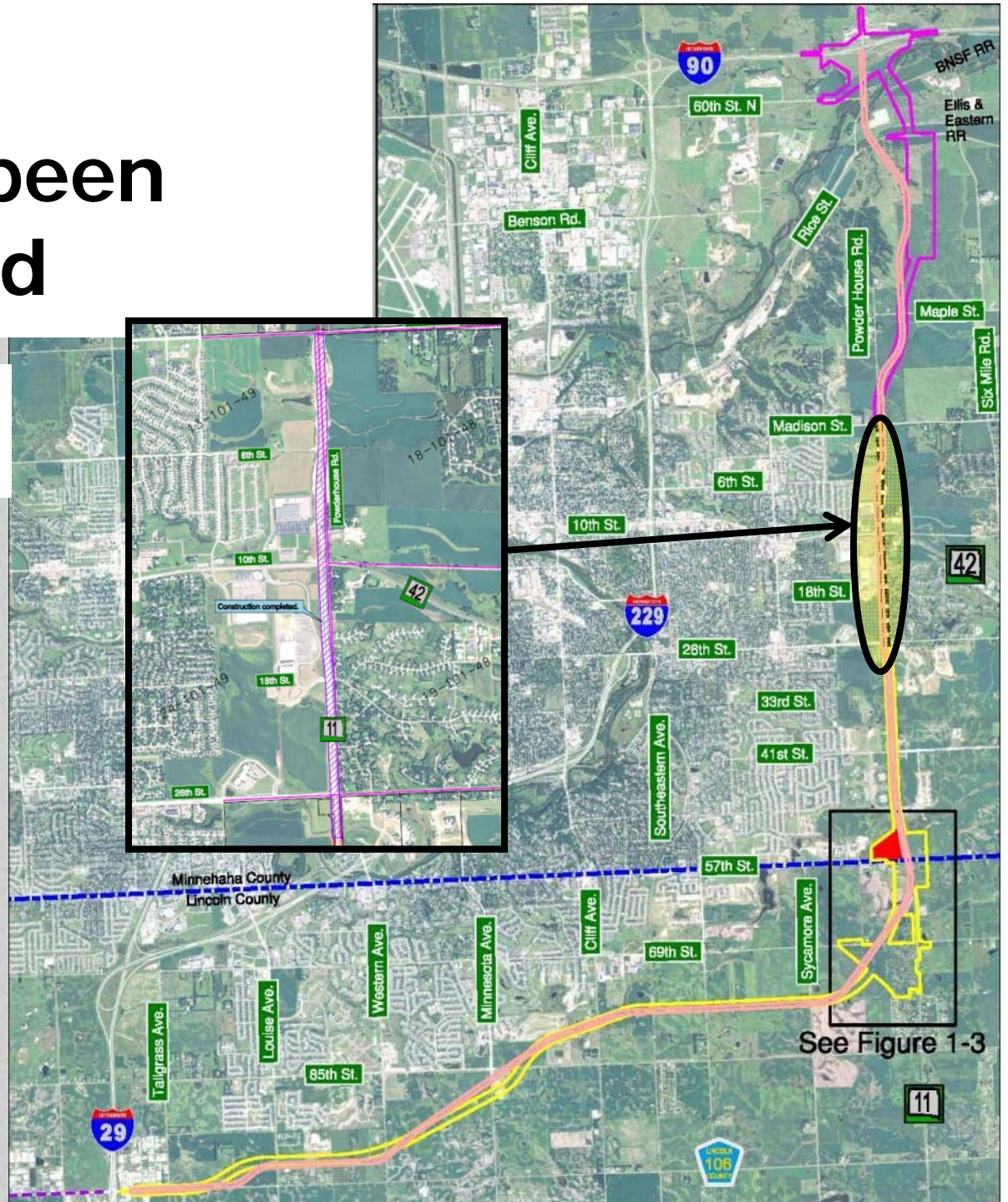
SD100 – Where We've Been

- 1993-East Side Corridor
- 2003-Signed EA
- 2005-Supplement to EA
- 2005-Corridor Preservation
- 2006-Revised Alignment
- 2007- Public Meeting
- 2008- Access and Noise Plan



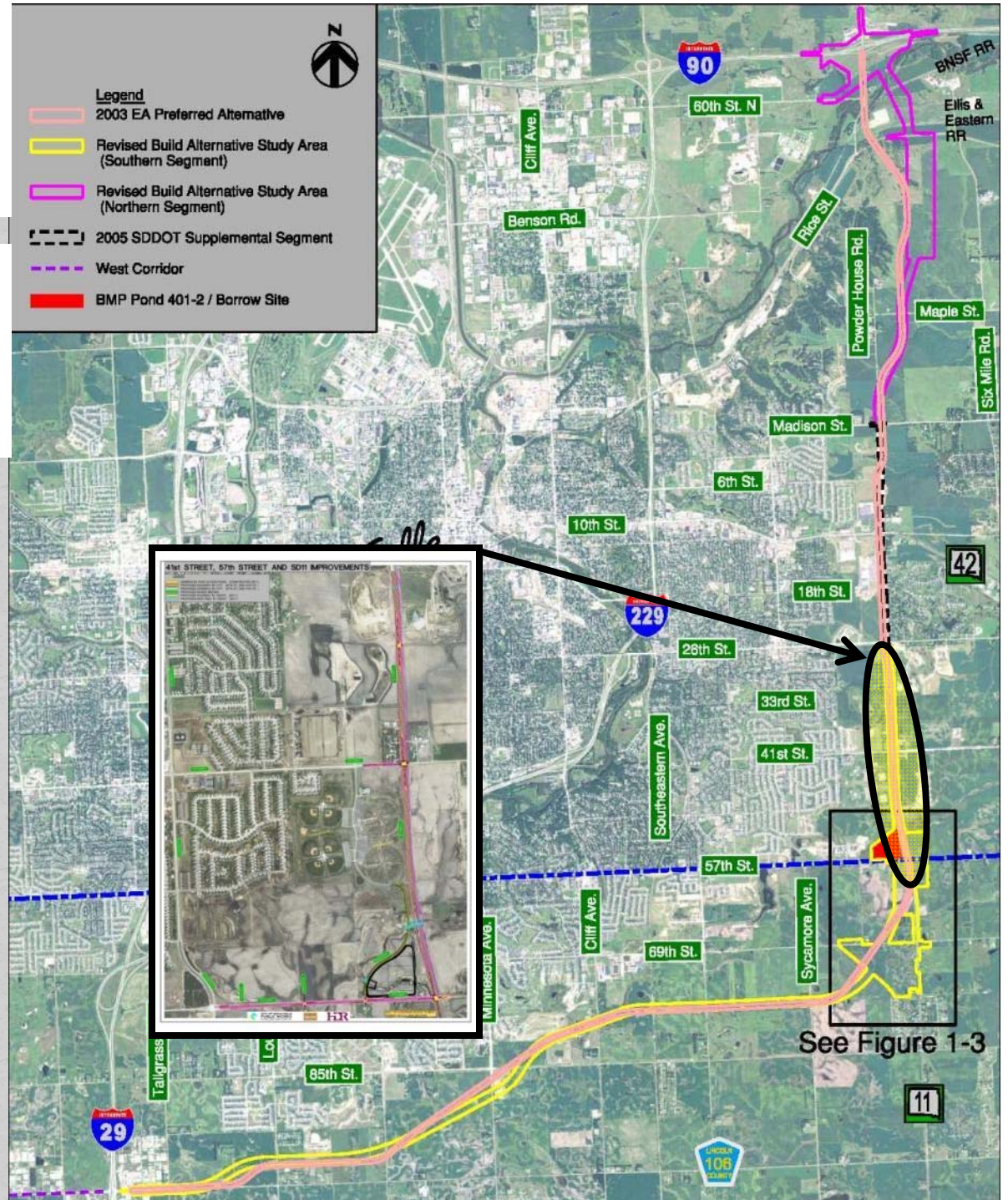
SD100 – What Has been Constructed

- Madison Street through 26th Street

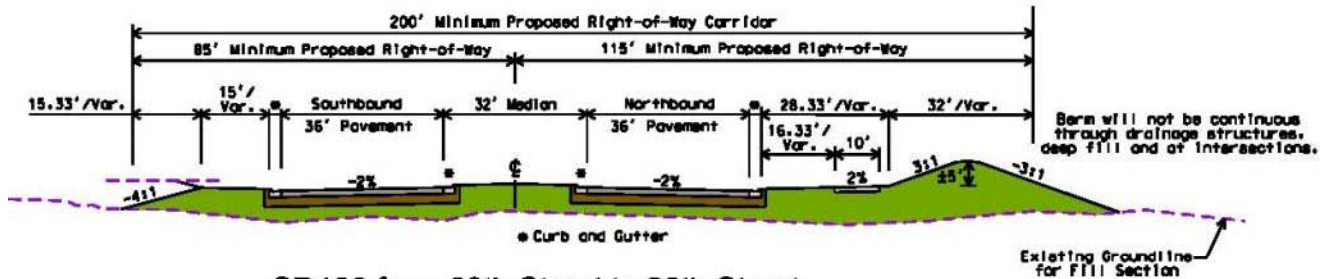


SD100 – What is Next

- 26th Street through 57th Street
- SD11 Improvements



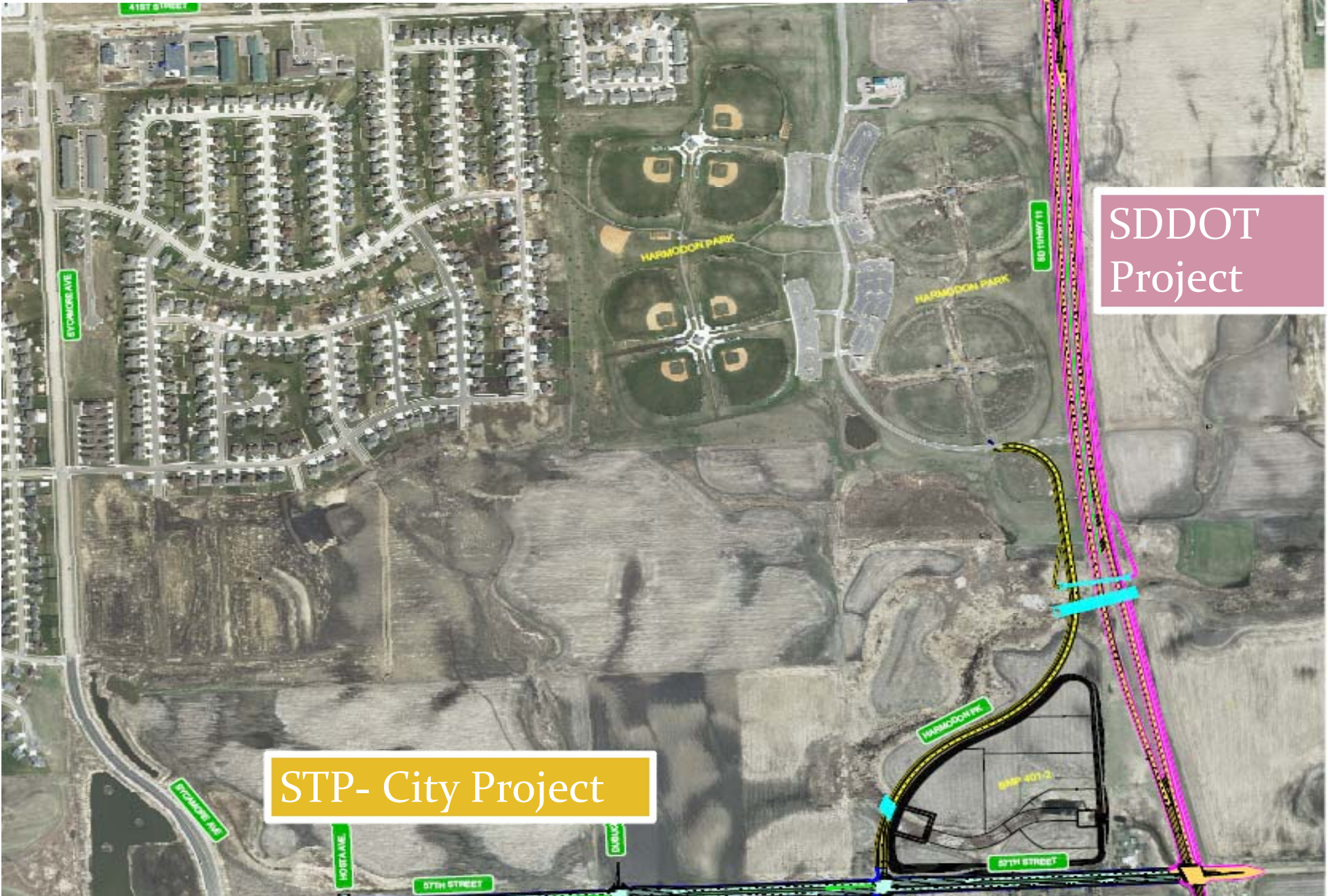
SD100 – 41st St. to 26th St.



SD100 from 69th Street to 26th Street



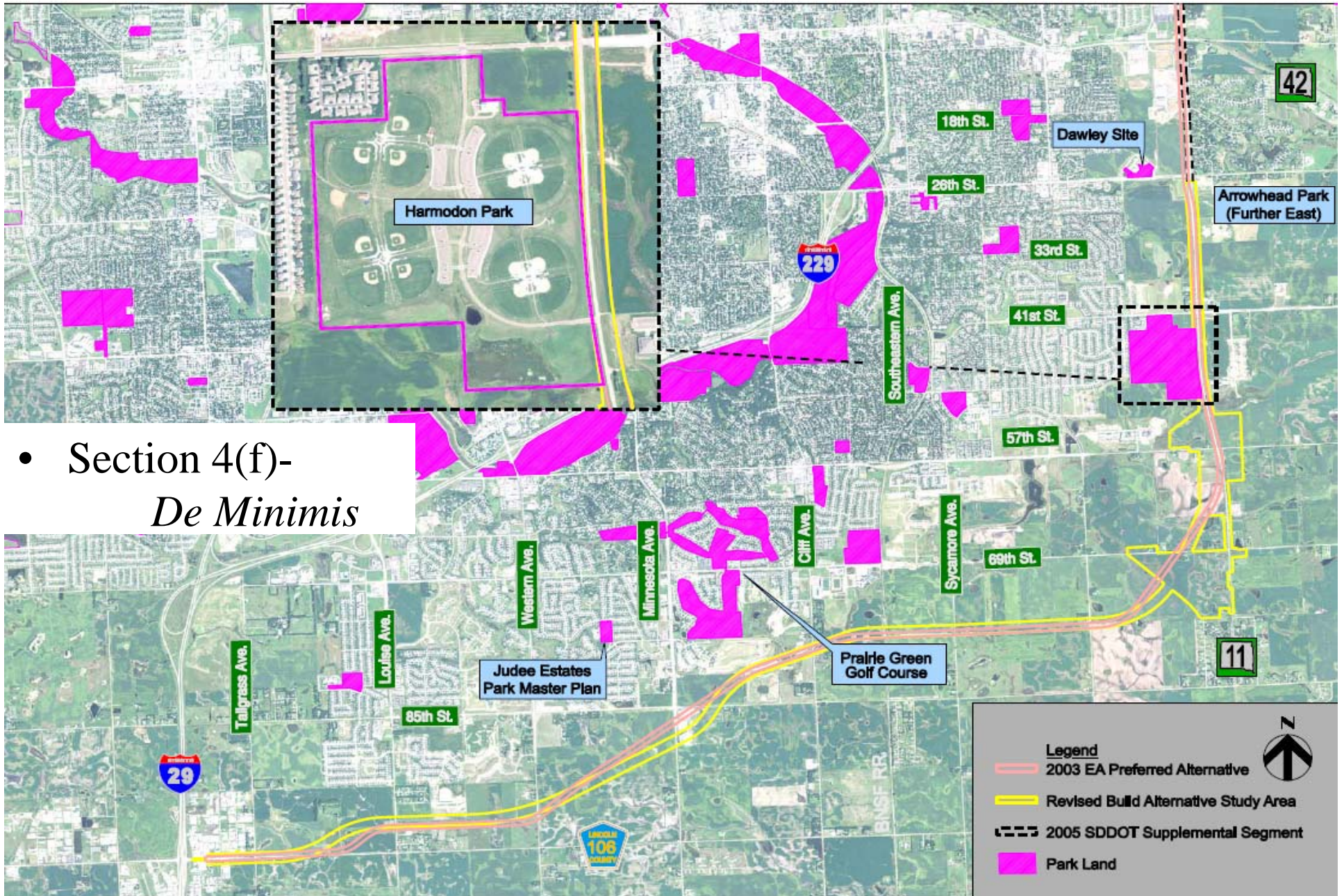
SD100 – 57th St. to 41st St.



SDDOT
Project

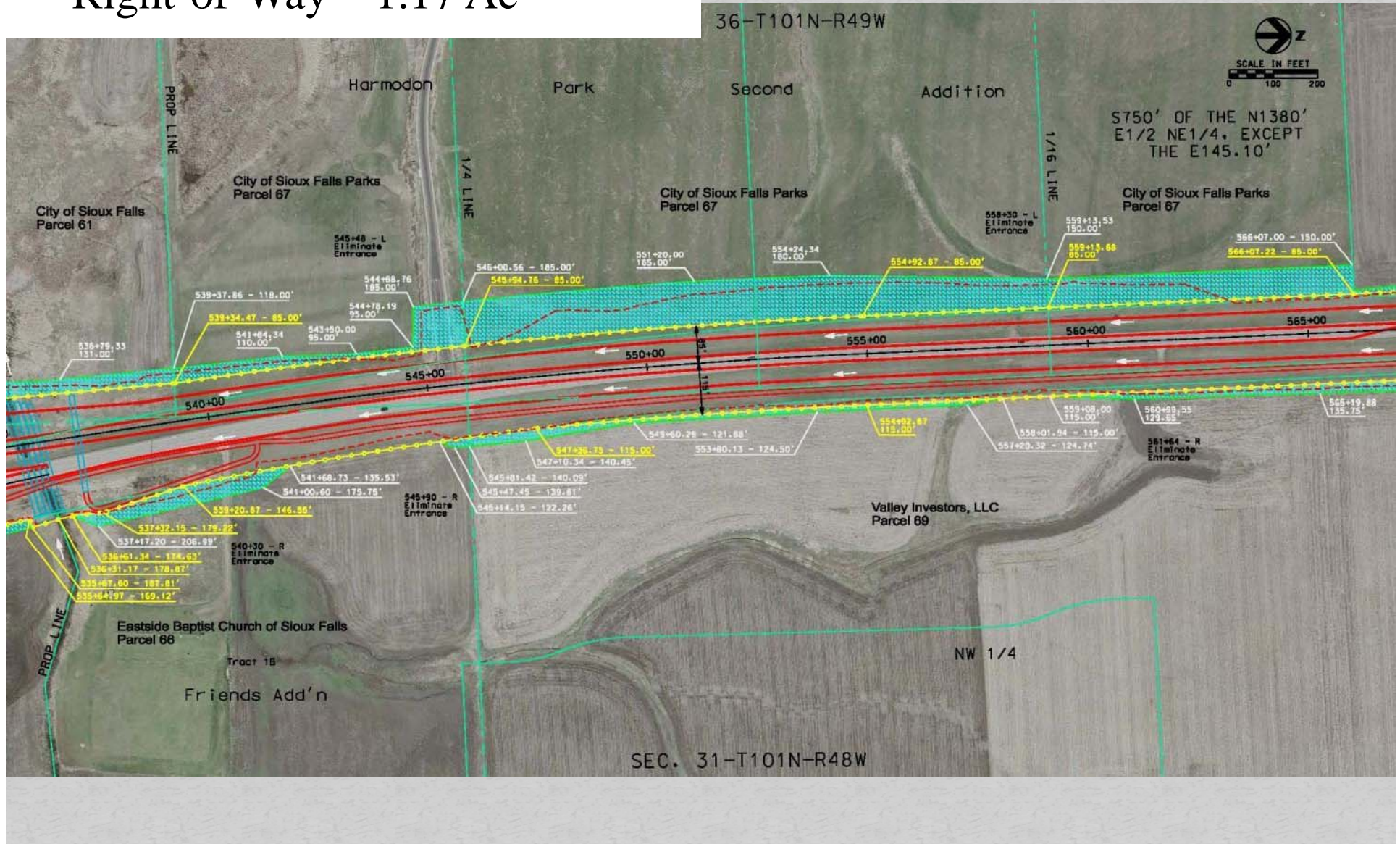
STP- City Project

SD100 – Harmodon Park



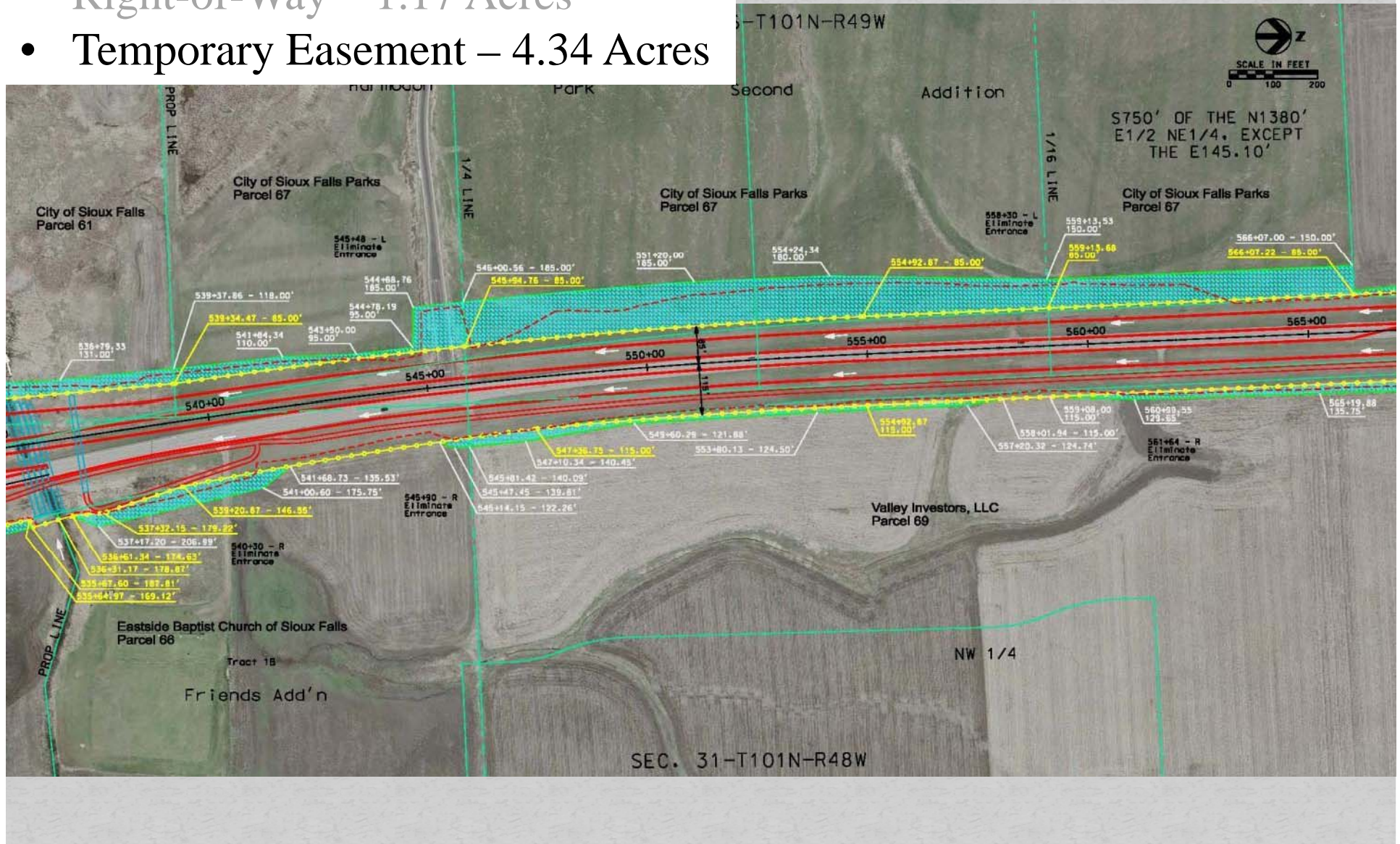
SD100 – Harmodon Park Impacts

- Right-of-Way – 1.17 Ac



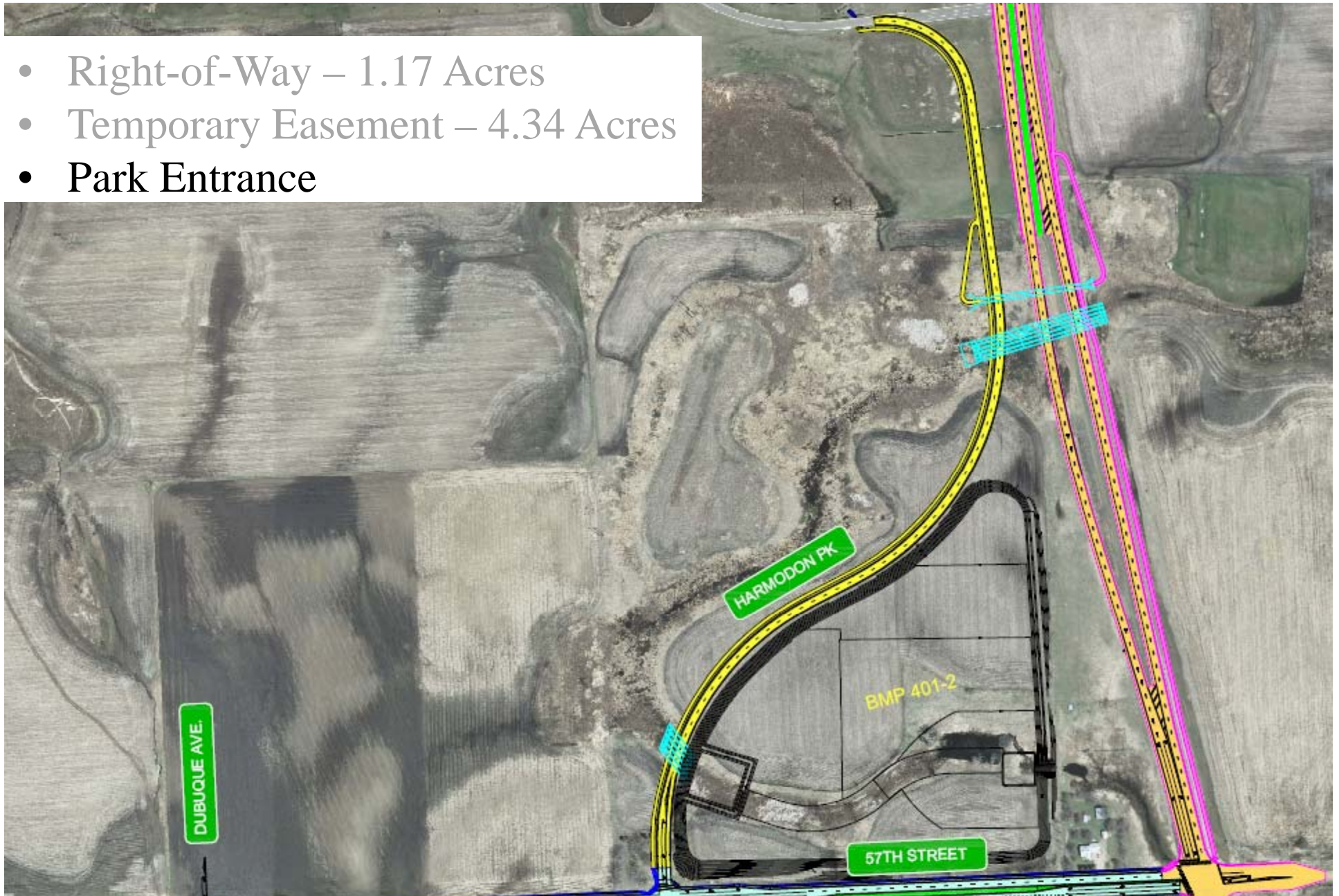
SD100 – Harmodon Park Impacts

- Right-of-Way – 1.17 Acres
- Temporary Easement – 4.34 Acres



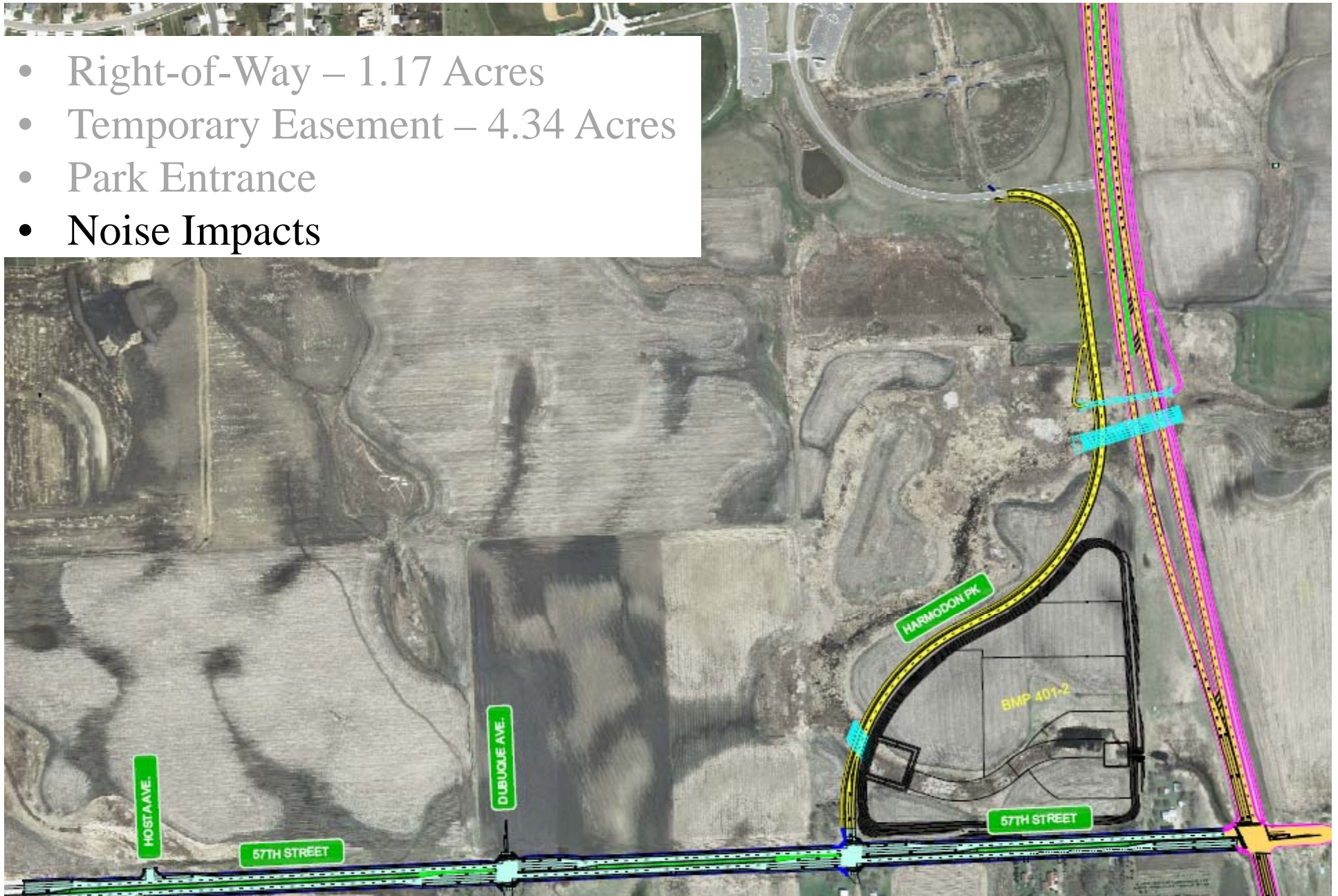
SD100 – Harmodon Park Impacts

- Right-of-Way – 1.17 Acres
- Temporary Easement – 4.34 Acres
- Park Entrance



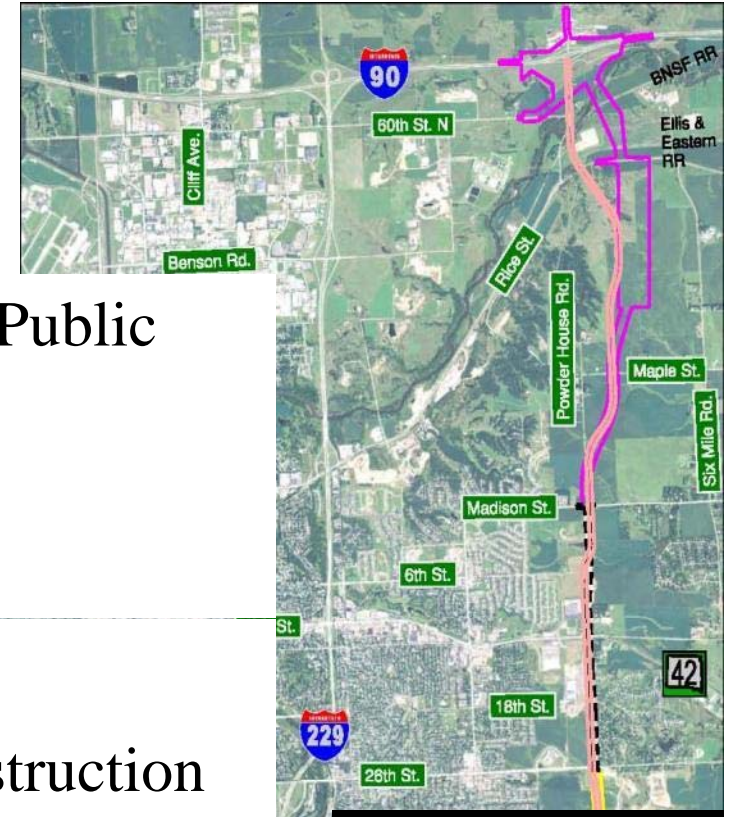
SD100 – Harmodon Park Impacts

- Right-of-Way – 1.17 Acres
- Temporary Easement – 4.34 Acres
- Park Entrance
- Noise Impacts

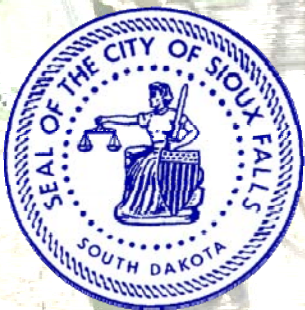
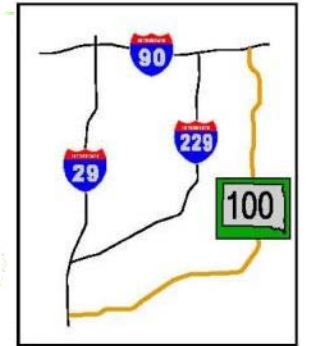


SD100 – Status of the Project

- FHWA Approval of Document for Public Availability
- 30 Day Public Comment Period
- Dec- FHWA Signs EA
- March 2012- Bid Letting
- April thru July 2012- Phase 1 Construction
- July thru Nov 2012- Phase 2 Construction
- June 30, 2013- Final Restoration



Questions?



HDR

