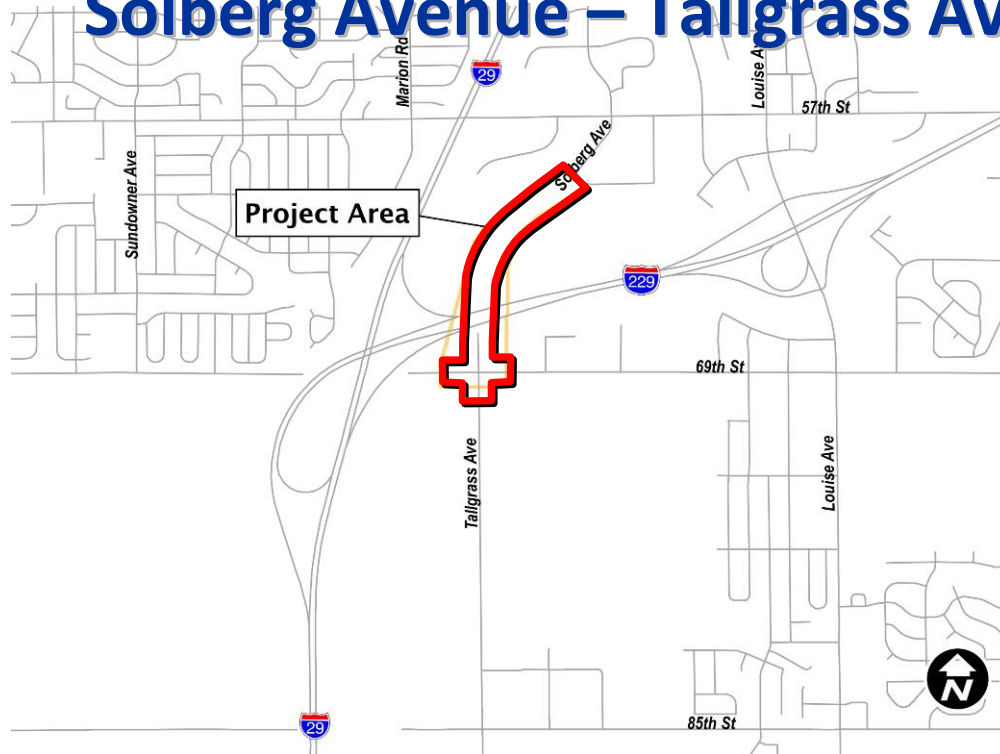




# Welcome Environmental Assessment for Solberg Avenue – Tallgrass Avenue Overpass of I-229



## Information Presented

- ◆ Purpose and Need for Action
- ◆ Alternatives Addressed
- ◆ Methods for Evaluating Alternatives
- ◆ Findings

# Meeting Format



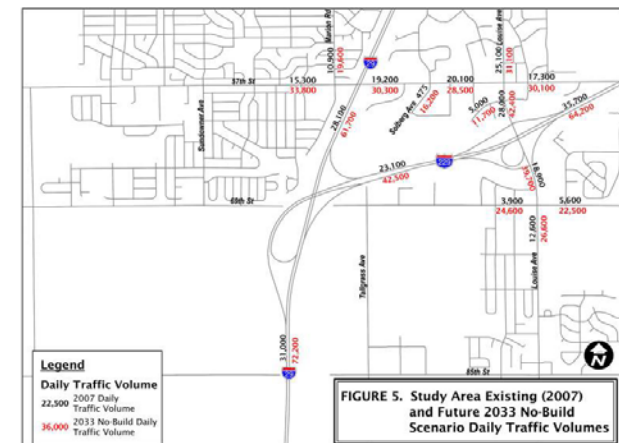
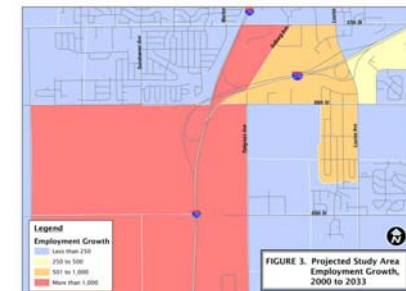
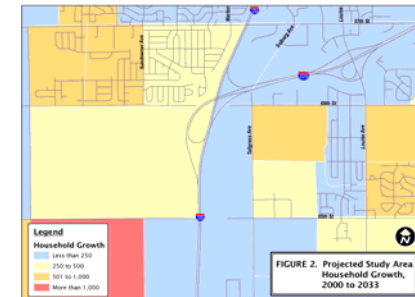
- ◆ **Open House from 5:30 PM**
- ◆ **Presentation Covers (15 Minutes):**
  - Why
  - What
  - When?
- ◆ **Comments/Questions:**
  - Form for Written Comments (Sign-in Table)
  - Staff from City/SDDOT and Consultant Can Answer Questions

# Purpose and Need



## Issues:

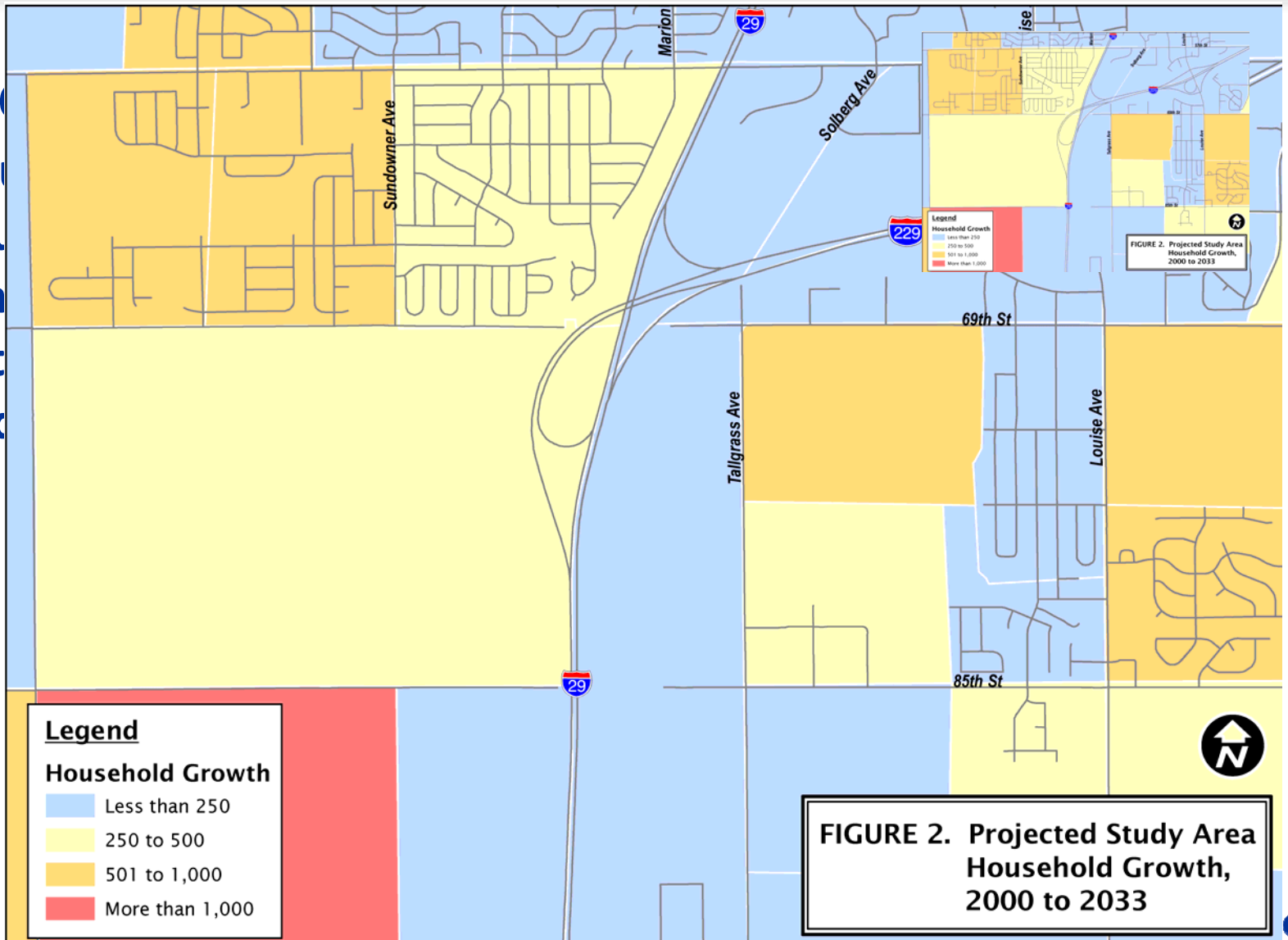
- ◆ Housing and Employment Growth in Southwest Sioux Falls
- ◆ Traffic Congestion along Louise Avenue
- ◆ Arterial Connectivity
- ◆ Pedestrian Connectivity
  - Reduce Travel Distances
  - Provide Alternate to Louise Avenue (Arterial)



# Purpose and Need



- ◆ Issues
- ◆ Housing
- ◆ Sources
- ◆ Transportation
- ◆ Arts
- ◆ People

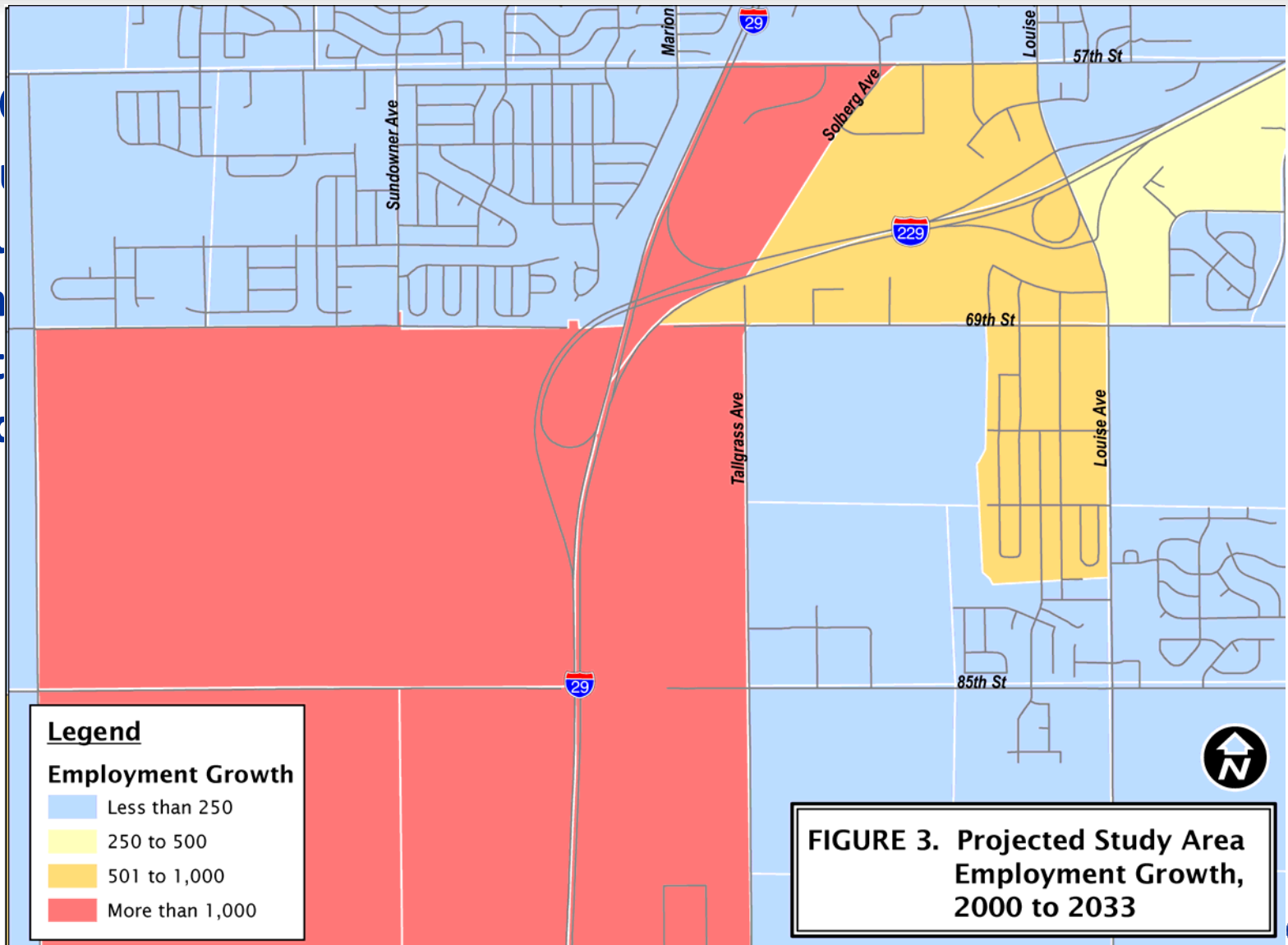


# Purpose and Need



## Issues

- ◆ Housing
- ◆ Sources
- ◆ Transportation
- ◆ Art
- ◆ Pec

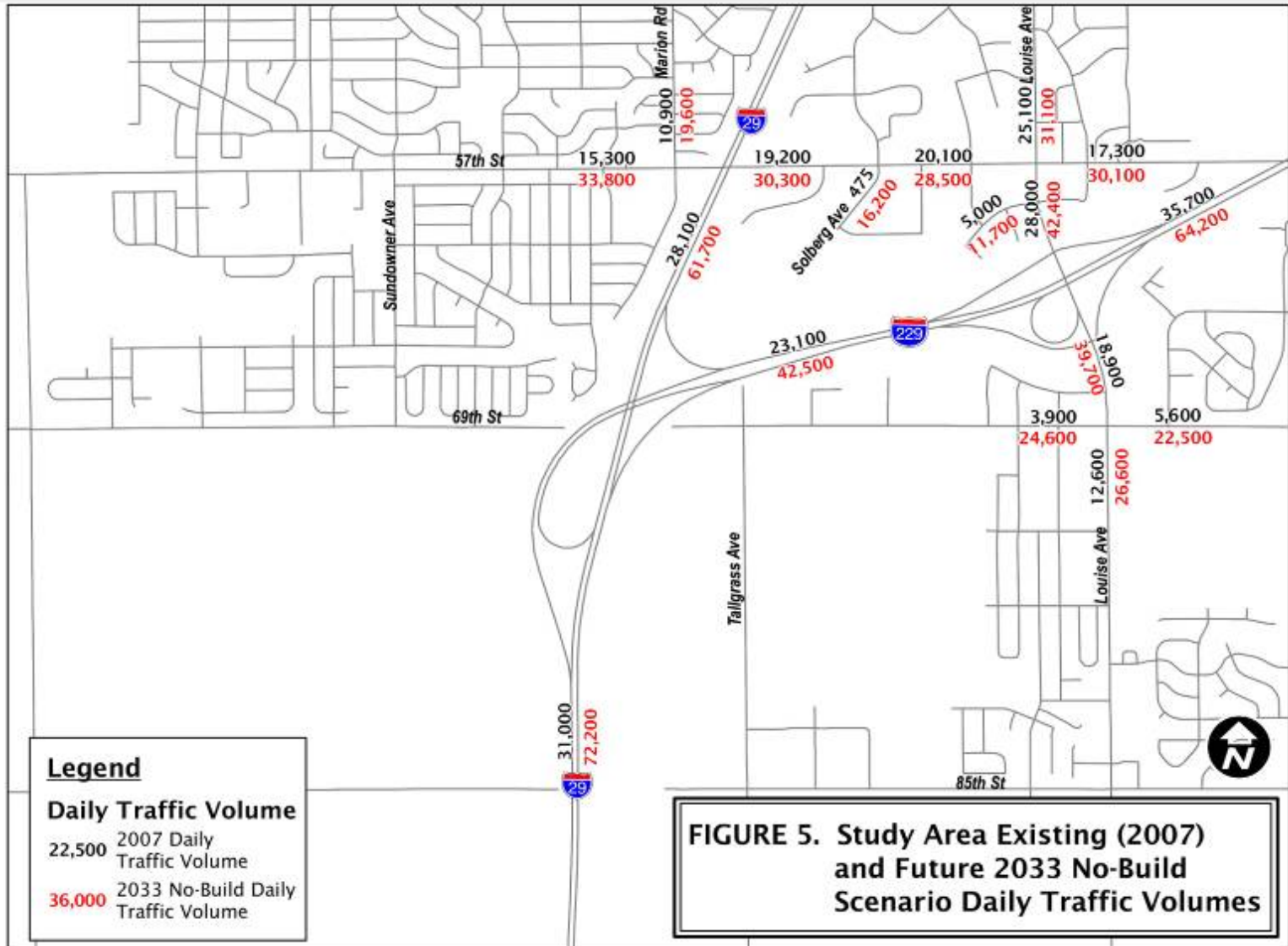


# Purpose and Need



## Issues

- ◆ How
- ◆ So
- ◆ Tra
- ◆ Art
- ◆ Pe
- 
- 



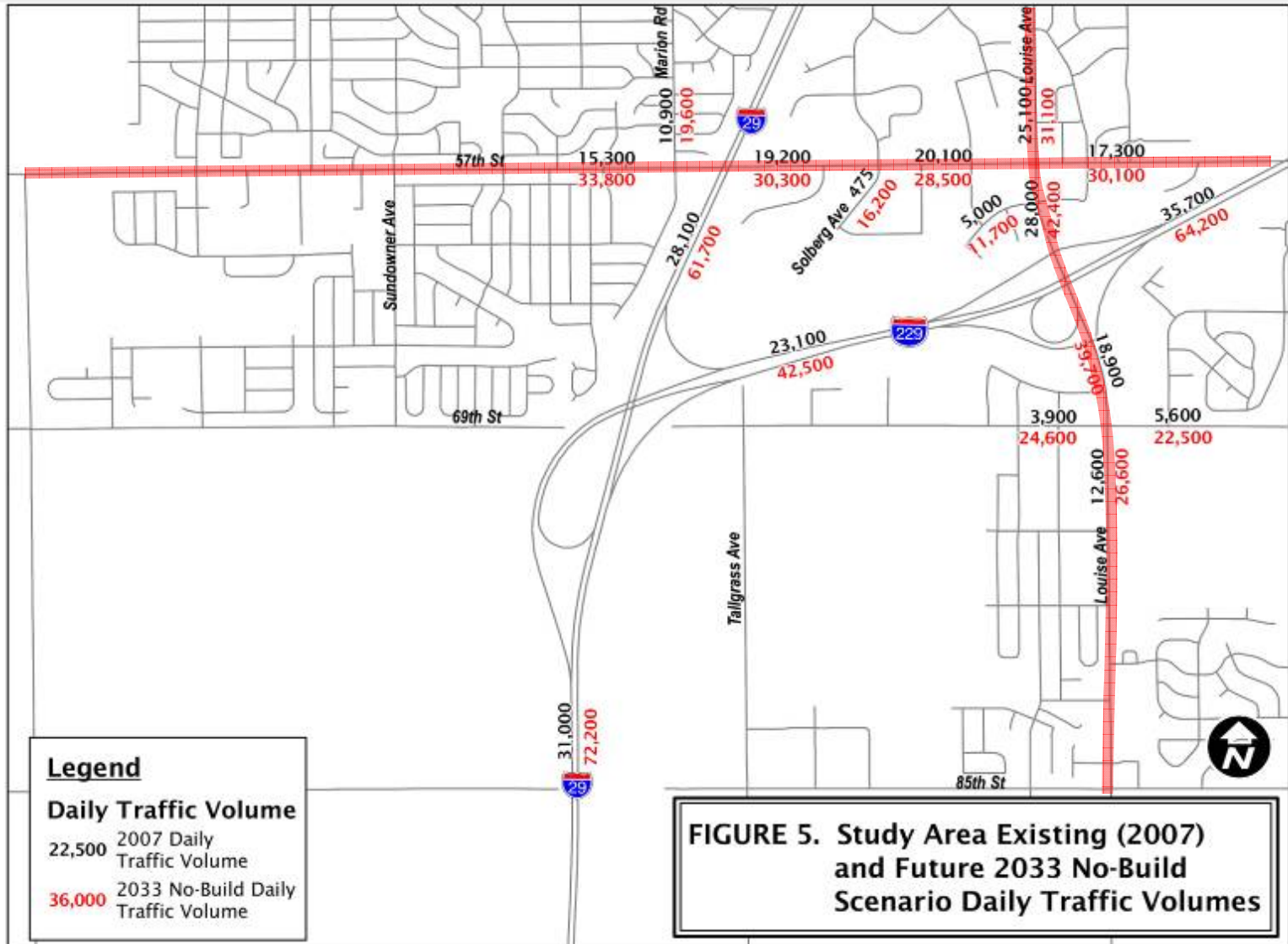
**FIGURE 5. Study Area Existing (2007) and Future 2033 No-Build Scenario Daily Traffic Volumes**

# Purpose and Need



## Issues

- ◆ How
- ◆ So
- ◆ Tra
- ◆ Art
- ◆ Pe
- 
- 



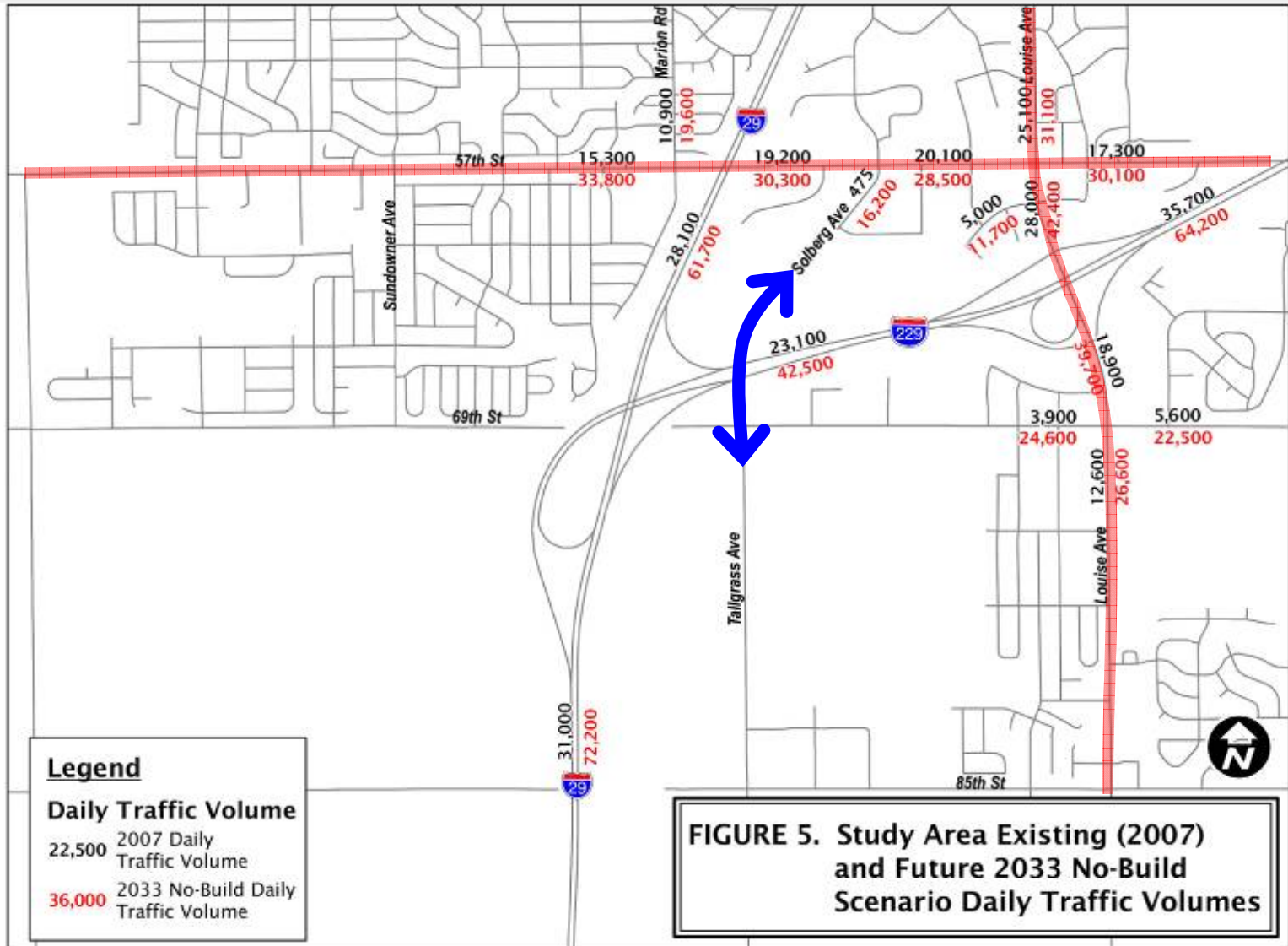
**FIGURE 5. Study Area Existing (2007) and Future 2033 No-Build Scenario Daily Traffic Volumes**

# Purpose and Need



## Issues

- ◆ How
- ◆ So
- ◆ Tra
- ◆ Art
- ◆ Pe
- 
- 



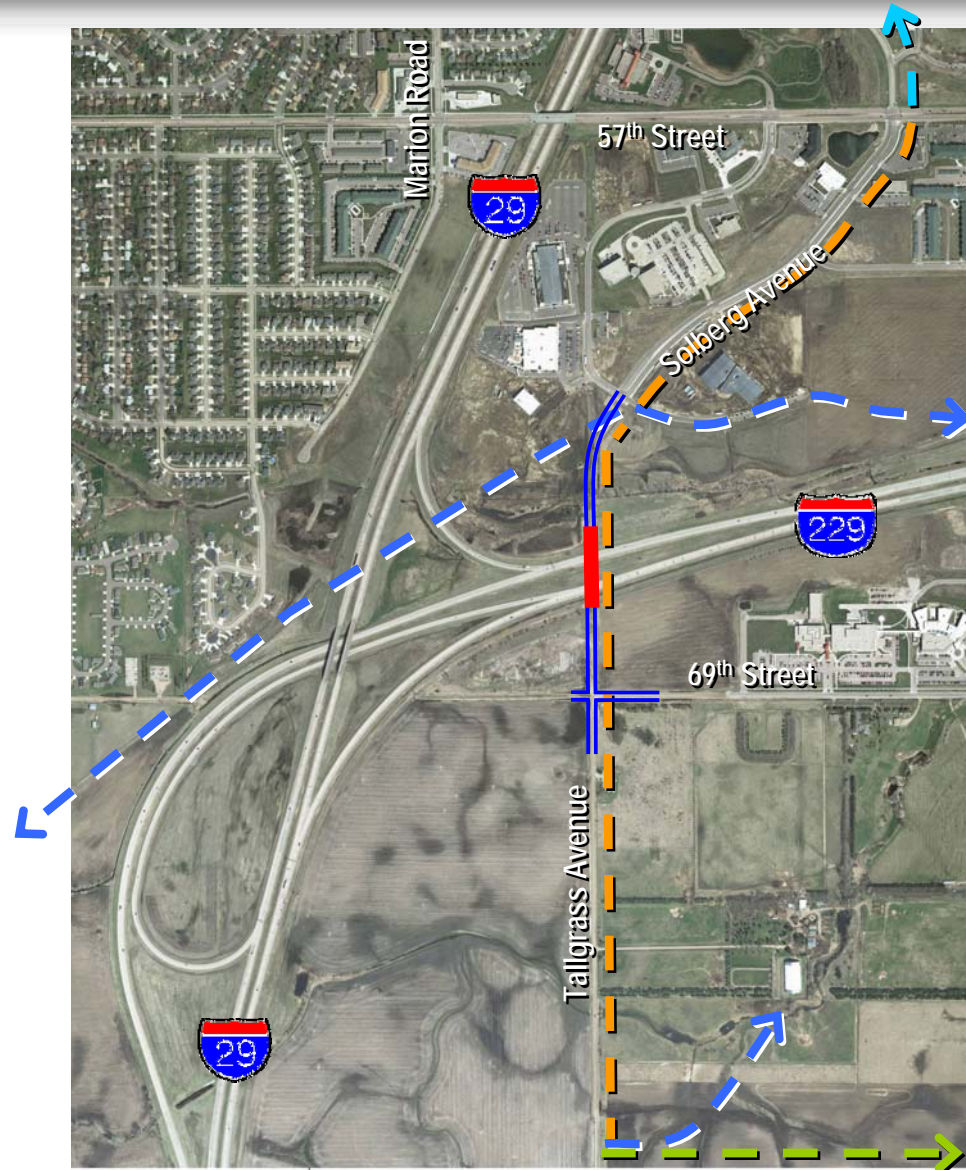


# Existing/Proposed Trails and Routes



## Legend

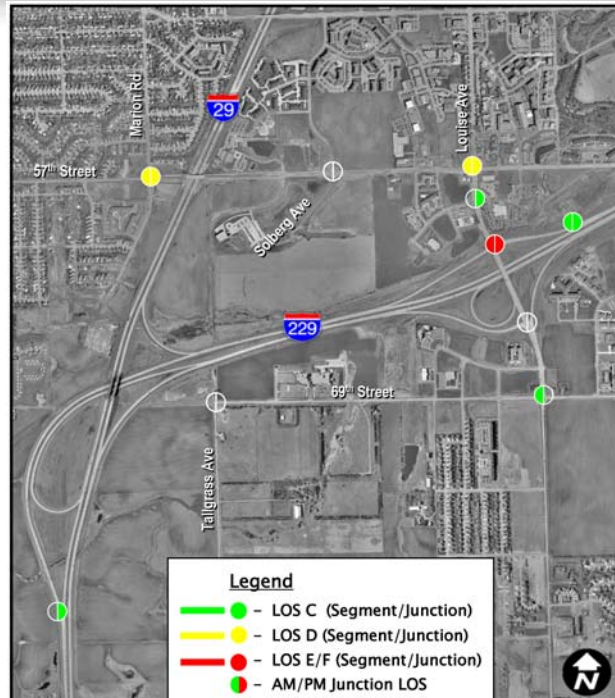
- Existing Bike Route (On Street)
- Proposed Side Route/Trail Connection
- Proposed Route (Long Term)
- Proposed Trail



# Current and Future Traffic

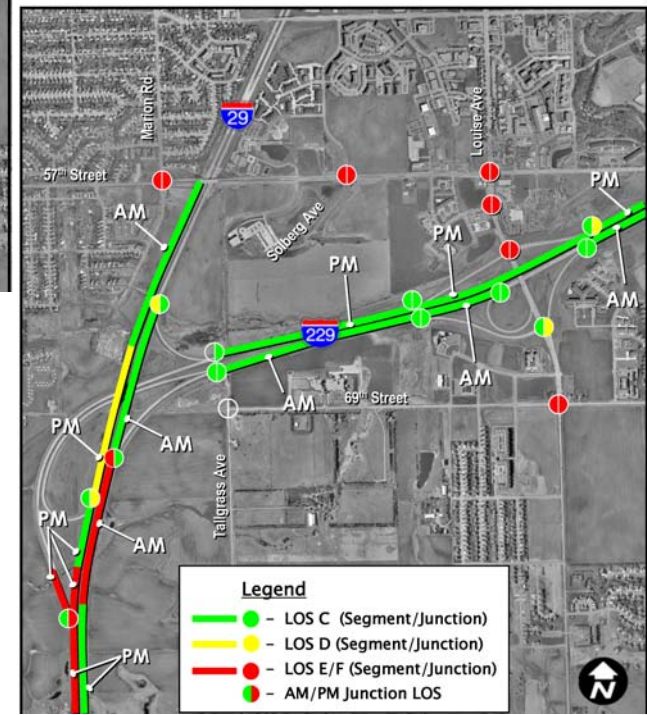


- ◆ Existing Traffic Operations - Concerns:
  - Louise Ave Ramp Intersection
  - 57<sup>th</sup> St / Louise Ave Intersection
- ◆ Traffic Volumes:
  - I-229: 3.0 to 3.5%/year
  - Louise Ave: 2.0 to 4.0%/year
- ◆ 2033 Poor Operations:
  - I-229 Southbound to Louise Avenue Off-ramp and On-ramp
  - I-29 Mainline
  - Louise Ave Ramp Intersections
  - Arterials (Louise Ave and 57<sup>th</sup> St)



Current Peak Hour Operations

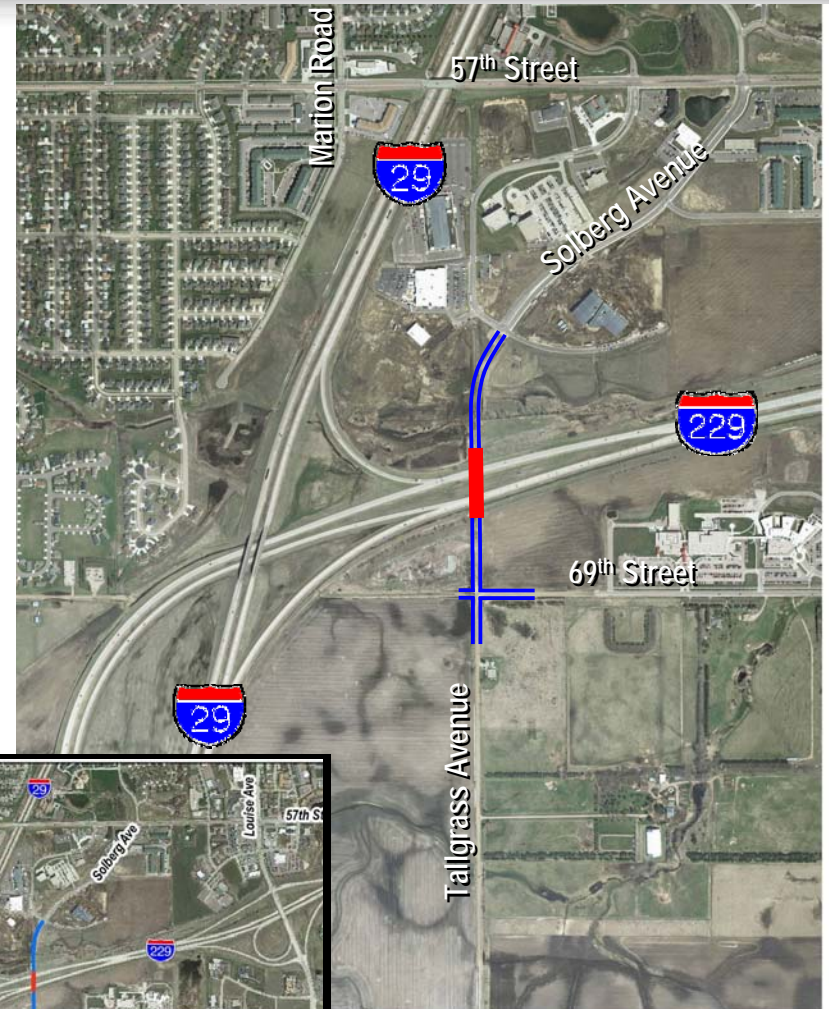
Forecasted 2033 Peak Hour



# Build Alternative



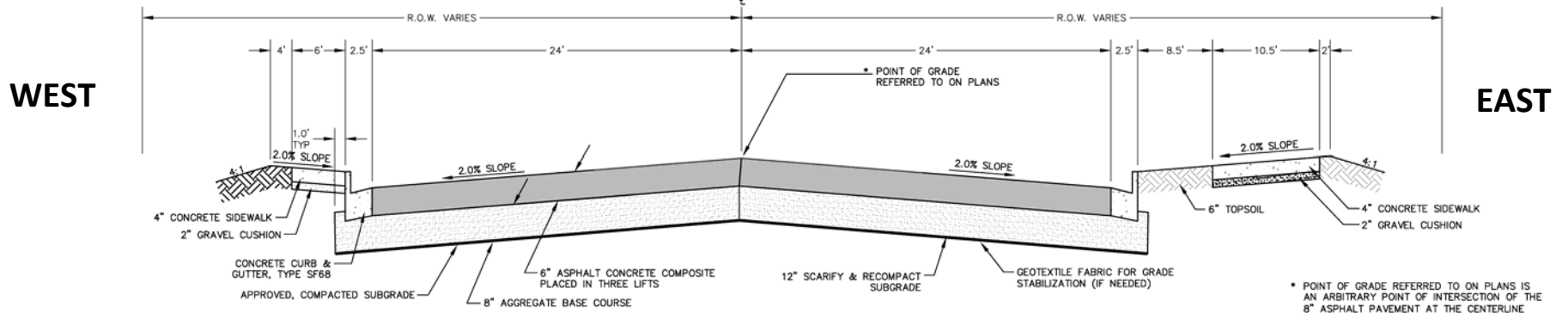
- ◆ Overpass of I-229
- ◆ 4-lane Divided Roadway from 59<sup>th</sup> to 69<sup>th</sup> St
- ◆ Sidewalk and Bike Path Along Solberg Avenue:
  - Sidewalk: West
  - Path: East
- ◆ Full Build-Out of 69<sup>th</sup> St/  
Tallgrass Ave Intersection



# Build Alternative - Section

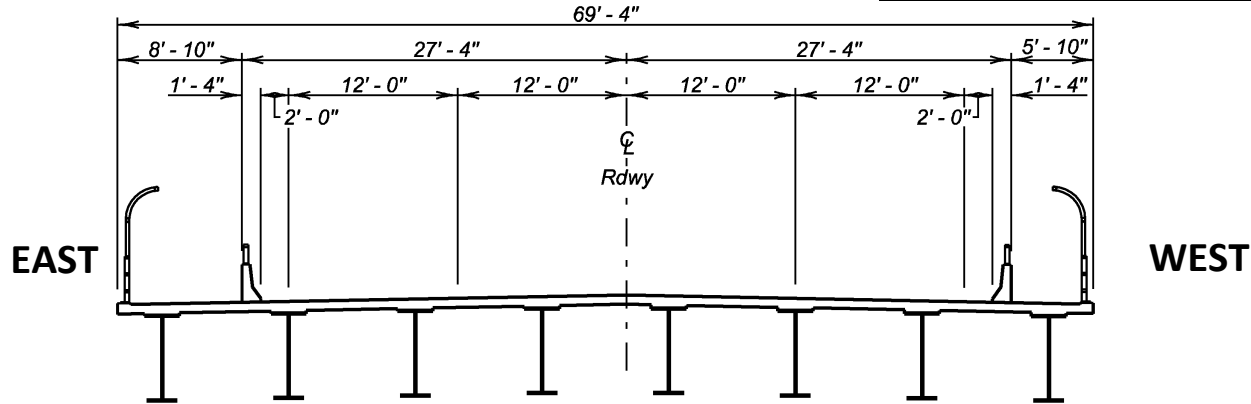


## Roadway Section - Typical



## Bridge Section - Typical

PLANS BY:  
OFFICE OF BRIDGE DESIGN, SOUTH DAKOTA DEPARTMENT OF TRANSPORTATION



# Build Alternative - Plan



# EA Evaluation Criteria



- ✓ Traffic
- ✓ Socioeconomics:
  - ✓ Land Use
  - ✓ Social and Demographic Setting
  - ✓ Housing
  - ✓ Economics
  - ✓ Employment and Labor
- ✓ Air Quality
- ✓ Noise
- ✓ Water Resources
  - ✓ Groundwater Hydrology
  - ✓ Surface Water Hydrology
  - ✓ Water Quality
- ✓ Vegetation and Wildlife
  - ✓ Vegetation
  - ✓ Wildlife
  - ✓ Threatened and endangered species
  - ✓ Wetlands
- ✓ Drainage and Flooding
- ✓ Cultural Resources
  - ✓ Historic Architectural Properties
  - ✓ Archaeological Sites
- ✓ Recognized Environmental Conditions
- ✓ Visual and Aesthetic Quality
- ✓ Geology
  - ✓ Geology
  - ✓ Soils
- ✓ Public Services and Utilities
  - ✓ Schools
  - ✓ Hospitals/Care Facilities
  - ✓ Fire Protection
  - ✓ Law Enforcement
  - ✓ Churches/Cemeteries
- ✓ Utilities

# Impacts and Mitigation



Project Key Assessment Area	Substantial Conclusions by Assessment Area	Identified/Possible Impact Mitigation
Land Use	5.3 acres of additional right-of-way Prime Farmland: - No direct conversion - Conversion (through development) of 99 acres possibly accelerated No impacts to 4f (parks) property	
Socioeconomic	Positive impact for development No environmental justice impacts	
Visual	Minimal impacts (new bridge) to the viewshed	
Air Quality	Air quality would be similar or slightly better	
Noise	No impacts outside existing/proposed right-of-way.	
Geology, Soil	Project will impact (either permanently/temporarily) approximately 7 acres of vegetated ground	Revegetation following construction
Hydrology	No water bodies nearby the project - No adverse impact	Erosion control plan during construction to control runoff
Wetlands	Approximately 4.9 acres of wetlands would be impacted	Wetland areas will be delineated and a mitigation plan developed for a 404 Permit - Anticipate purchasing wetland bank credits
Wildlife, Threatened and Endangered Species	No Threatened and Endangered species within the project area	
Cultural/Historical Resources	No pre-historic or historical properties identified within the project area (State Archaeological Resource Center and the State Historic Preservation Office)	
Environmental Conditions	No hazardous material sites were identified within the project area	

# Next Steps – Solberg/Tallgrass EA



- ◆ **Written Comments accepted through May 5, 2010**
- ◆ **Finalize EA – May 2010**
- ◆ **Action by FHWA – May-June 2010**
- ◆ **Finish Design – Summer 2010**
- ◆ **Begin Construction – Fall 2010**





# Input/Information Opportunities



- ◆ **Public Information Meeting: Today**
- ◆ **SDDOT Web Site:**  
[www.sddot.com/pe/projdev/environment.asp](http://www.sddot.com/pe/projdev/environment.asp)
- ◆ **Email: [Bill\\_Troe@urscorp.com](mailto:Bill_Troe@urscorp.com)**



# Questions? Please Contact:



**Bill Troe - URS Corporation**

**(402) 952-2522**

**Bill\_Troe@urscorp.com**

**Steve Gramm – SDDOT**

**(605) 773-6641**

**steve.gramm@state.sd.us**

**Cary Cleland - SDDOT**

**367-5680**

**cary.cleland@state.sd.us**

**SDDOT Project Web Site**

**[www.sddot.com/pe/projdev/environment.asp](http://www.sddot.com/pe/projdev/environment.asp)**