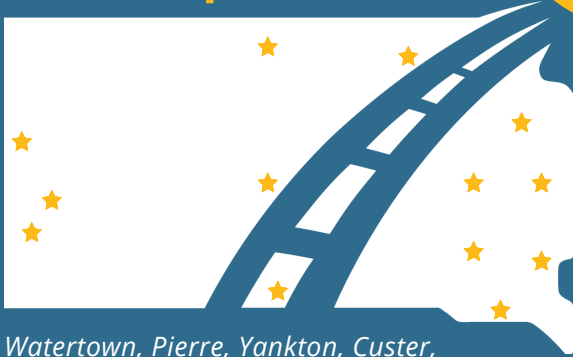


South Dakota State Government Careers

Internship Locations



Watertown, Pierre, Yankton, Custer, Huron, Mitchell, Aberdeen, Mobridge, Winner, Rapid City, Brookings, Sioux Falls, Belle Fourche

"A lot of people think of a job at DOT as a starting point. If that were true, there wouldn't be so many people who stay. I think people appreciate the stability, variety and flexibility found here. What I do has lasting impact so even my grandkids will be proud!"

- Jesse Nelson,
Project Engineer

View Job Listings

- Go to the Career Space homepage: <http://bhr.sd.gov/workforum>
- Click **All Open Positions**
- Click on the **Internship Tab**
 - Click the **Filter** button on the far right to search for specific internships

To Apply

First Time Users:

- Go to [Career Space](#) homepage
- Click **Register**
- Complete the registration process
- Click to review and **complete** your profile
- Click **Search for Jobs**
- Ready to apply? Click **Apply Now**
- Complete the application process
- Click **Submit**

Returning Users:

- Go to [Career Space](#) homepage
- Click Login
- Enter your Username (email address)
- Enter your Password
- Update **My Profile** if needed

Contact BHR

Need additional assistance or have questions? Contact BHR by phone at 605-773-3148 or email careers@state.sd.us



SD 
DOT

**BUILD YOUR
CAREER HERE**

INTERNSHIPS

Eligibility Requirements

- ★ Attend an accredited college, university, or vocational-technical program in the United States. This includes students in undergraduate and graduate programs.
- ★ Carry at least 12 credit hours, as a full time student, in the semester in which you apply.
- ★ Begin the internship with sophomore standing or above. If you attend a vocational/technical school, you must have at least completed the first year of your program, at least nine months, by the beginning of the internship.

Engineering Internship Program

What Can You Expect?

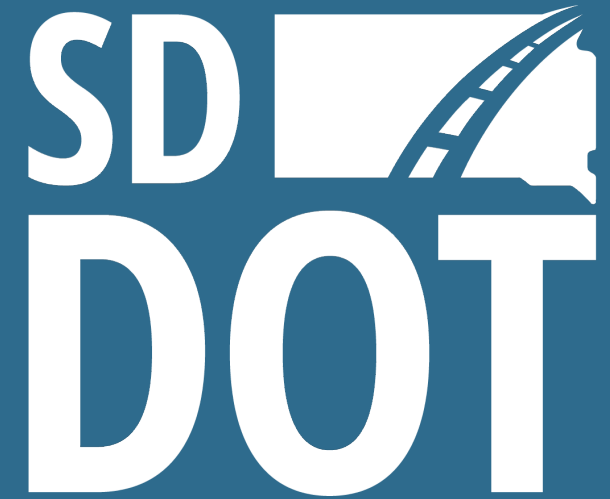
Be a part of the team to explore emerging technologies to improve the **design, construction, maintenance, and operations** of the state's transportation system.

Hands on Experience

Research projects cover a wide variety of topics including:

Traveler information, new materials and design procedures, state-of-the-art equipment for condition monitoring, reducing environmental impact of highways and much more!

Check for listings at:
<https://bhr.sd.gov/job-seekers/internship/>



SD
DOT

CONTACT US

South Dakota Department of
Transportation

700 E. Broadway Ave., Pierre, SD 57501
605-773-3265
dotgeneralinfo@state.sd.us
<https://dot.sd.gov/>

