

CITY MAP

NORTHVILLE

SPINK COUNTY - SOUTH DAKOTA

T 119 N - R 64 W

SCALE



POP. 139 (2020)

2021

PREPARED BY

**SOUTH DAKOTA
DEPARTMENT OF TRANSPORTATION**

IN COOPERATION WITH

**U.S. DEPARTMENT OF TRANSPORTATION
FEDERAL HIGHWAY ADMINISTRATION**

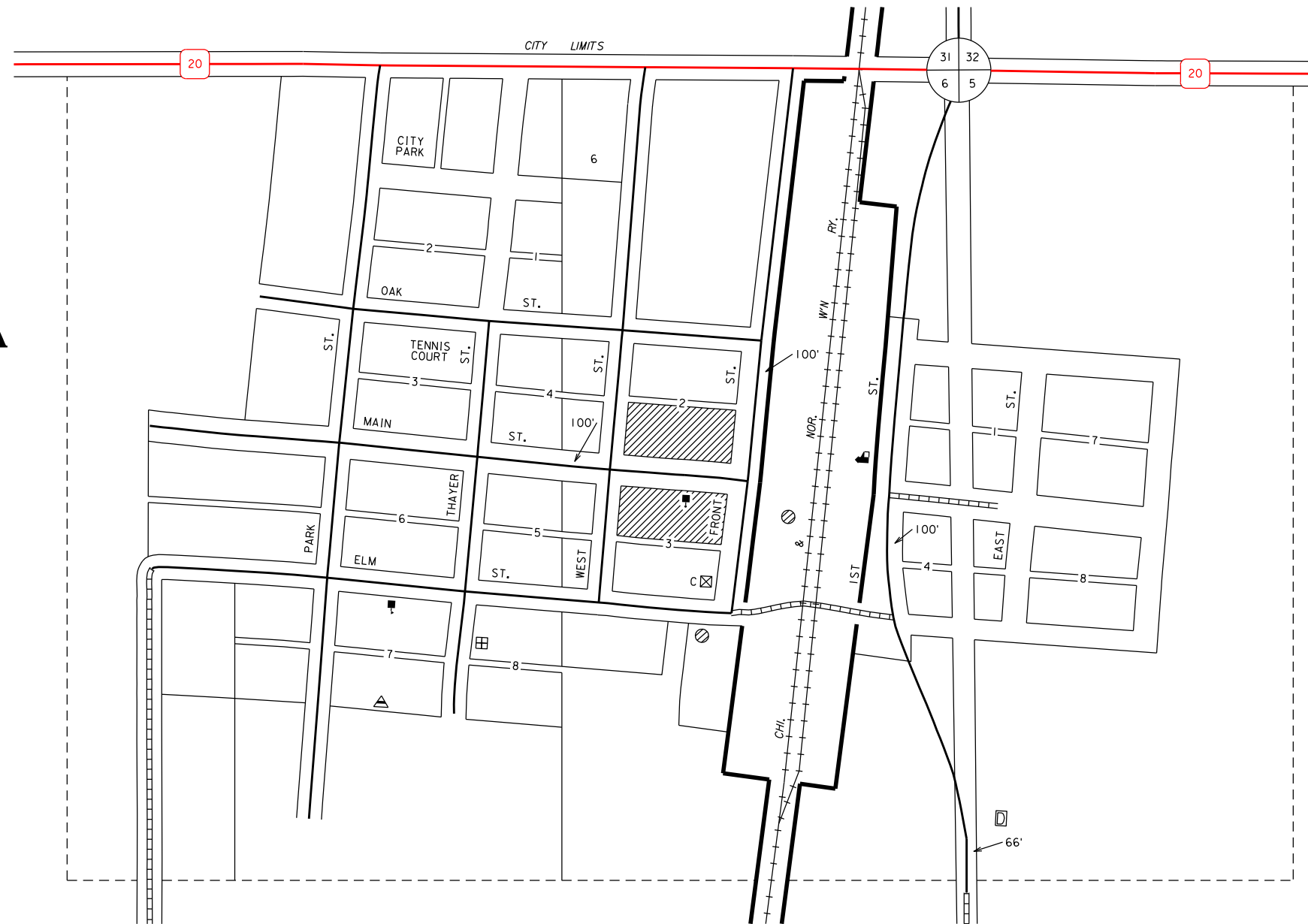
ALL STREET RIGHT OF WAY 80 FT.

ALLEYS 20 FT.

(UNLESS OTHERWISE INDICATED)

(UNOFFICIAL EDITION)

RESTRICTION OF LIABILITY: The South Dakota Department of Transportation makes no claims, promises or guarantees about the accuracy, completeness, or adequacy of the data and expressly disclaims liability for errors and omissions of the data content. No warranty of any kind, implied, expressed or statutory, including but not limited to the warranties of non-infringement of third party rights, title, merchantability and fitness for a particular purpose is given with respect to this data.



LEGEND

U.S. NUMBERED HIGHWAY		18
U.S. NUMBERED INTERSTATE HIGHWAY		90
STATE NUMBERED HIGHWAY		45
STREAMS, CREEKS, AND OTHER WATERWAYS		
CANALS, LATERALS, IRRIGATION DITCHES WITH DIRECTION OF FLOW		
HARD SURFACE		
GRAVEL SURFACE		
EARTH SURFACE UNIMPROVED		
TRAIL		
GRADE		
CENTRAL BUSINESS DISTRICT		
TOWN CENTER (COUNTY SEAT)		
CITY LIMITS		
RAILROAD		
GRAIN ELEVATOR		
SWIMMING POOL		
BALL FIELD		
CEMETERY		
HOSPITAL		
HIGHWAY GARAGE (C-COUNTY, S-STATE)		
POST OFFICE		
CHURCH		
LIBRARY		
POWER PLANT		
WATER SUPPLY STAND PIPE OR TANK		
MUNICIPAL BUILDING		
BULK PLANT		
FIREHALL		
SCHOOLHOUSE		
TOWNHALL		
MUSEUM		
POLICE STATION		
AIRPORT		