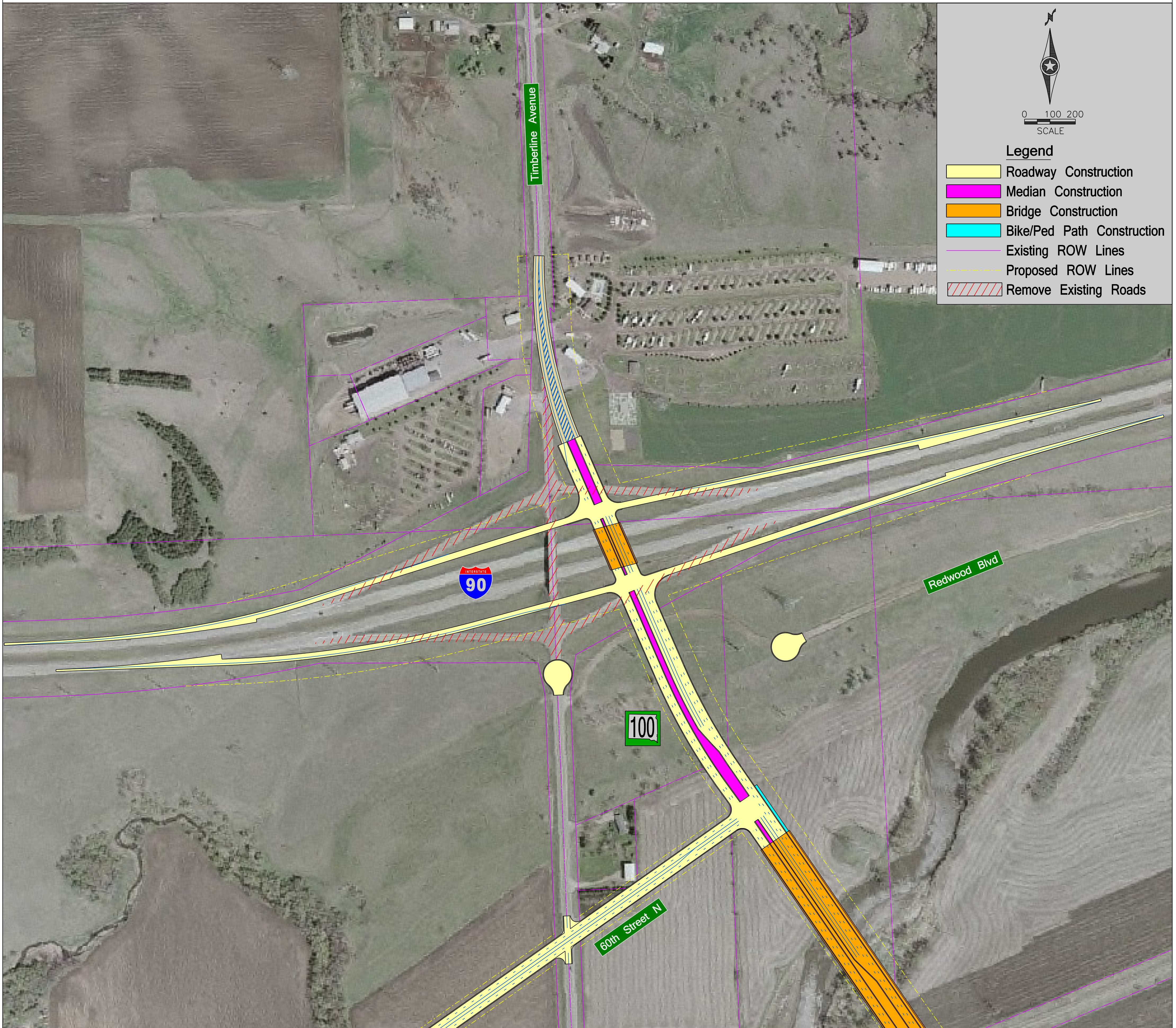


Tight Diamond Interchange at SD100 and I-90



Drawn by: Brenda Miller
 Date: 01-11-07
 Checked by: Steve Hoff
 Date: 01-11-07
 Revisions:
 Date:



P0100(101)405 PCN 00T7
 SD100 Corridor Preservation
 January 2007

Interstate 90 – Exit 402
 Option 1 – Tight Diamond
 Interchange