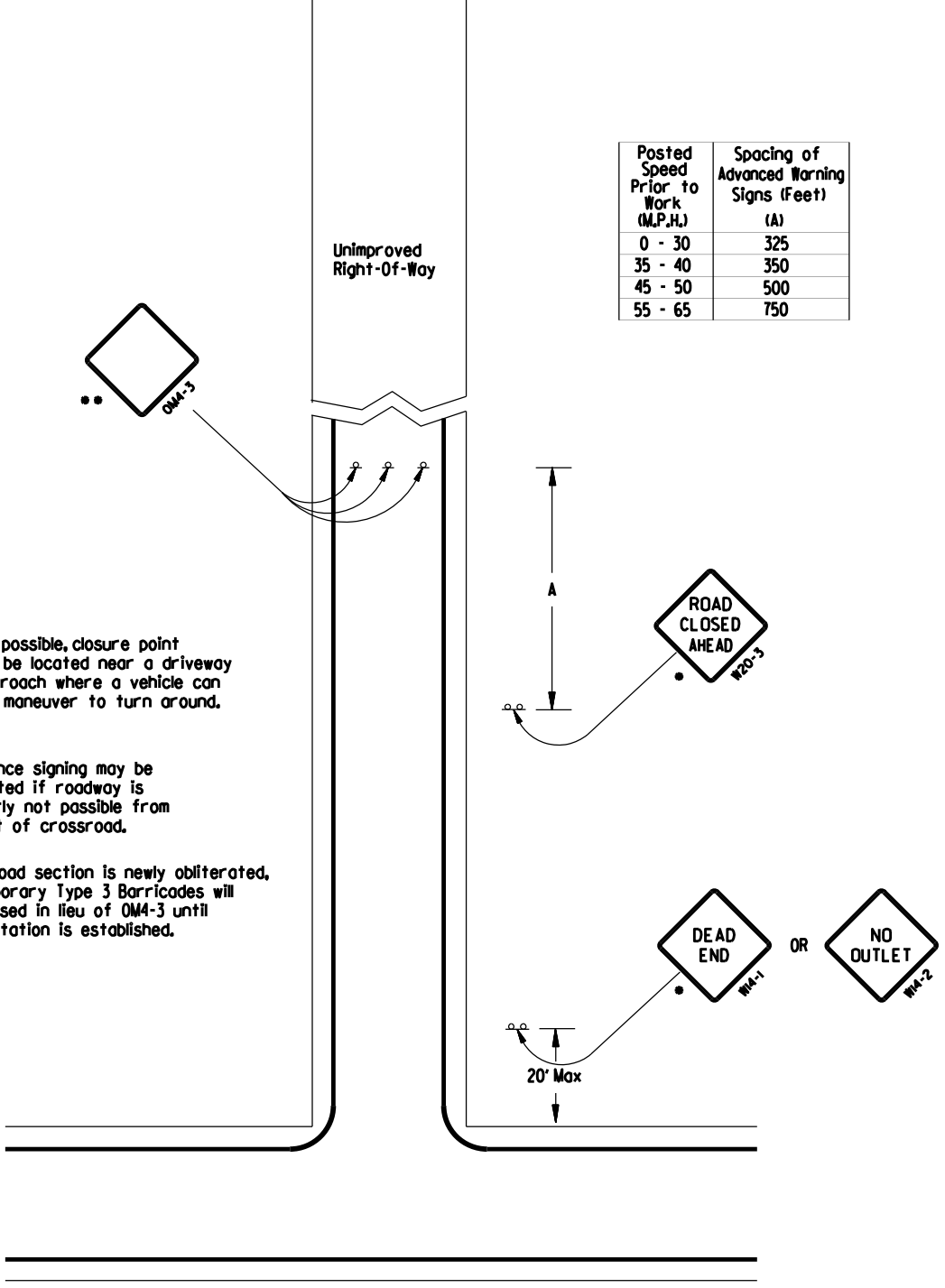


Posted Speed Prior to Work (M.P.H.)	Spacing of Advanced Warning Signs (Feet) (A)
0 - 30	325
35 - 40	350
45 - 50	500
55 - 65	750



Where possible, closure point should be located near a driveway or approach where a vehicle can safely maneuver to turn around.

- Advance signing may be omitted if roadway is clearly not passible from sight of crossroad.
- If road section is newly obliterated, temporary Type 3 Barricades will be used in lieu of OMA-3 until vegetation is established.

August 25, 2021