



DEPARTMENT OF
TRANSPORTATION

U.S. Highway 14 and 83 - Euclid Avenue

Project Location: Pierre, SD

Project Number: 026Z and X05W

OUR TEAM

SDDOT:

Dean VanDeWiele, Pierre Area Engineer
Dan Vockrodt, Pierre Area Engineering Supervisor
Dan Strand, Pierre Area Project Engineer
Rodney Larson, SD DOT

MORRIS:

TJ Gallagher, Division Manager
Erin Severyn, Project Manager
Matt Radke, Site Superintendent
Josh Meintsma, Site Foreman

HDR:

Dustin Hamilton
Lindsay Shagla

City of Pierre:

Nick Waters, City Engineer
Brad Palmer, Utilities Director
Josh Bible, Construction & Operations Manager





Provide Quality Products and Quality Services for the Success of Our Employees, Customers and Company



Safety

Our decisions today affect how we all live tomorrow



Efficiency

Time matters, everyone contributes



Integrity

Professionalism, honesty and fairness



Team Empowerment

Working together to be our best

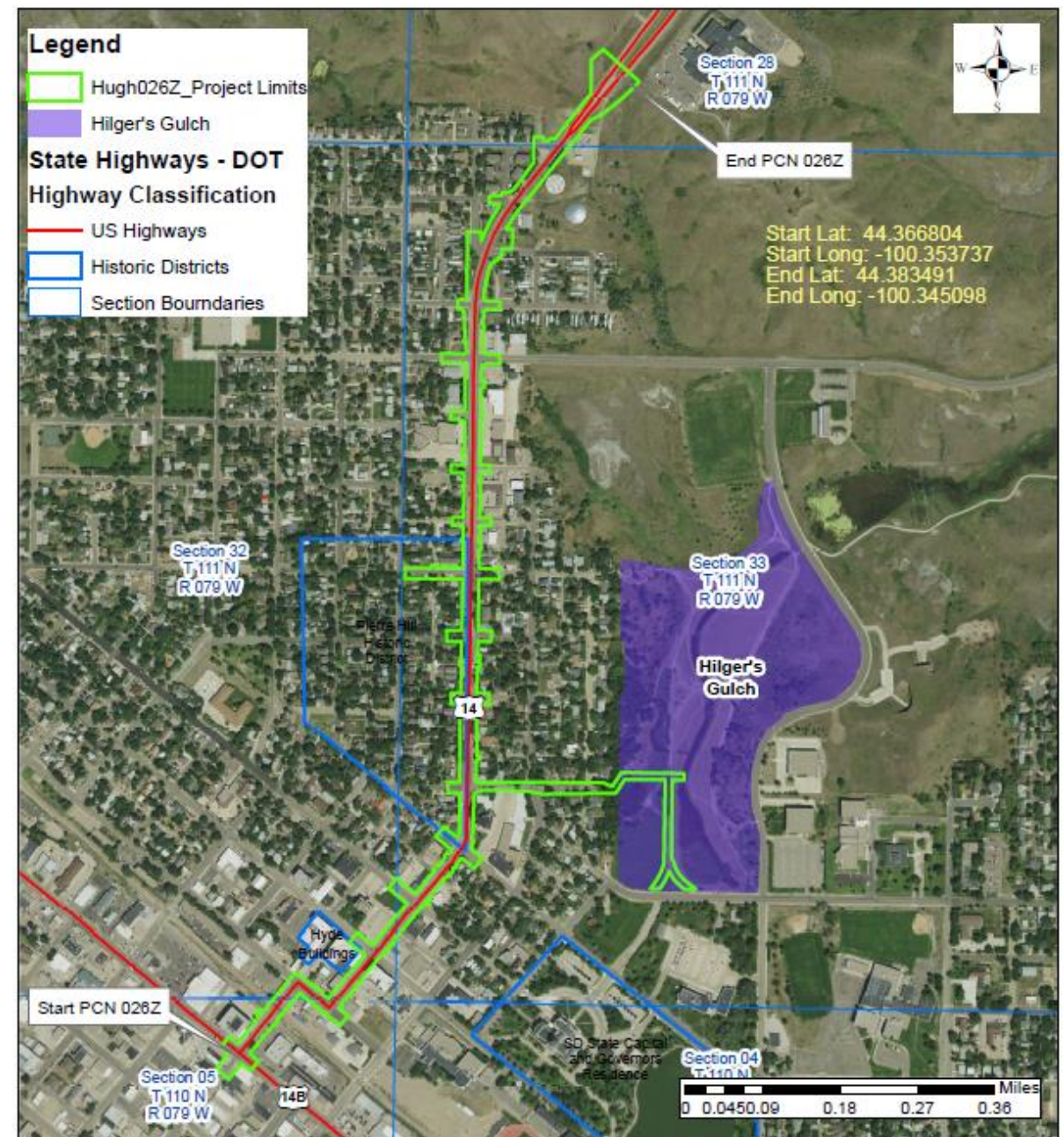
Project Background Information

Urban reconstruction, asphalt and concrete surfacing, storm sewer, lighting, signals, sanitary sewer and water main replacement.



Project Limits

- U.S. Highway 14/83 (Euclid Avenue) – from Sioux Avenue intersection to the divided highway west of S.D. Highway 1804 in Pierre.
- Elizabeth Street (between Highway 14 and Grand Avenue).
- Wynoka Street drainage outfall.



Project Highlights

- Concrete Surfacing to Pleasant and Euclid
- Asphalt Surfacing from North of Pleasant to End of Project
- Three lane to Broadway Ave.
- Four lane Broadway Ave. to Seneca St.
- Five lane Seneca St. to US 14-83
- Traffic Signals at Pierre St., Capitol Ave., Broadway Ave., Elizabeth Ave., and 4th Street
- Two Projects in one
- Two-year project

EUCLID WATER MAIN

City project constructed with SDDOT project



Replace during Hwy Construction

- 60-100 year old watermain
- Water service lines (main to curb stop)
- Stub-outs for future opportunities
- Sanitary sewer utility adjustments
- Notification from Morris
- Minimal disruption to services

Construction Schedule



*Project timelines and progress goals are weather dependent and reliant on the contractors scheduling.

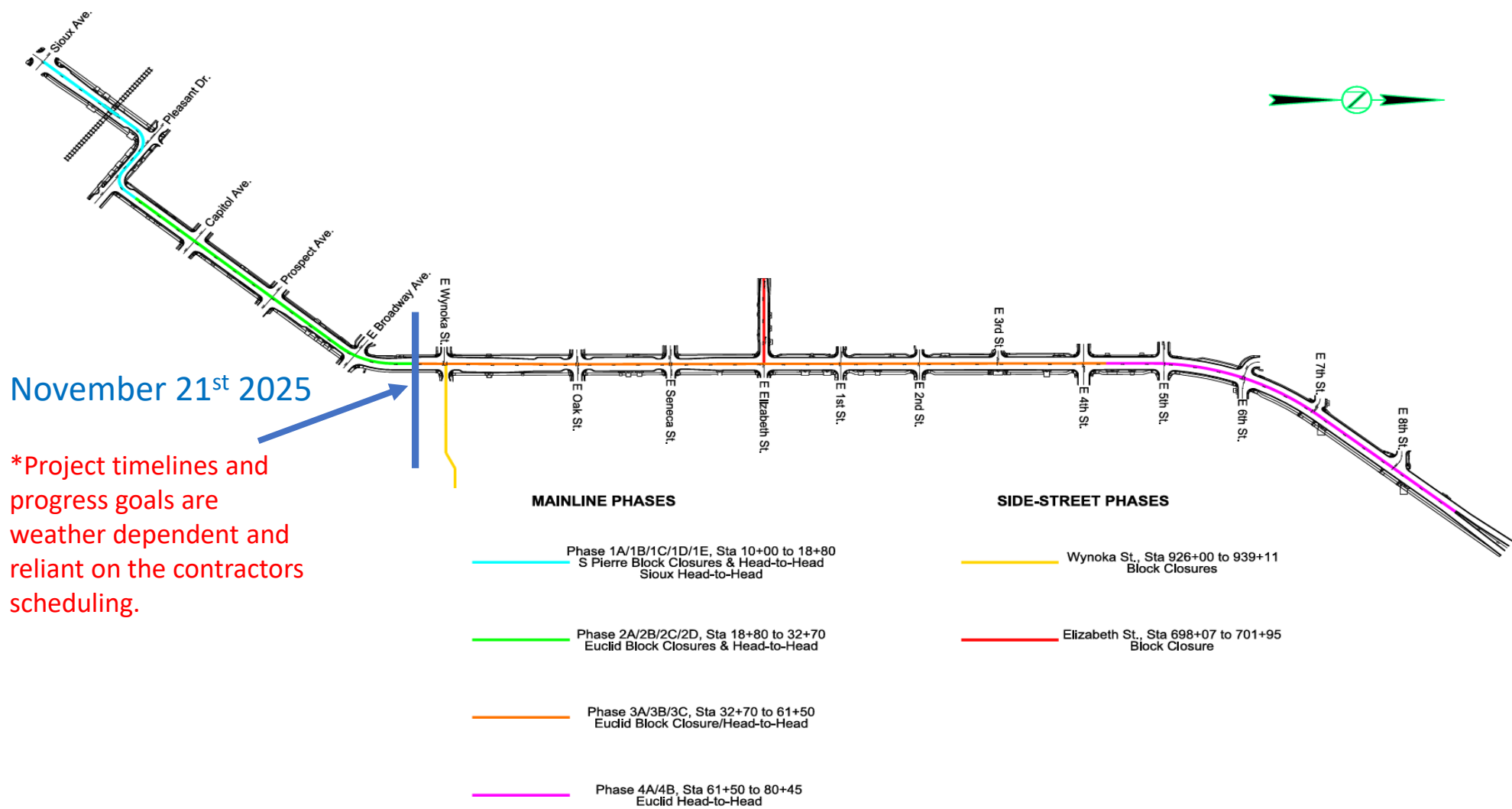
Two Season Construction Schedule:

Season 1 – Phase 1 and 2 completed by Nov. 2025.

Season 2 – Phase 3,4 and Wynoka Nov. 2026.

All work complete November 2026.

Construction Phasing Plan



Phase 1A, 1B and 1C Overview

(Sioux Ave to just below Train Bridge)

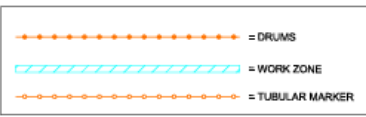
- New Sanitary Sewer
- New Water Line
- New traffic signal heads and pedestrian controlled crosswalk buttons
- New Storm Sewer
- Curb Gutter and Surfacing
- Phase 1A, 1B and 1C for the Sioux Ave. portion have an interim completion date of July 3rd 2025



PHASE 1A LAYOUT

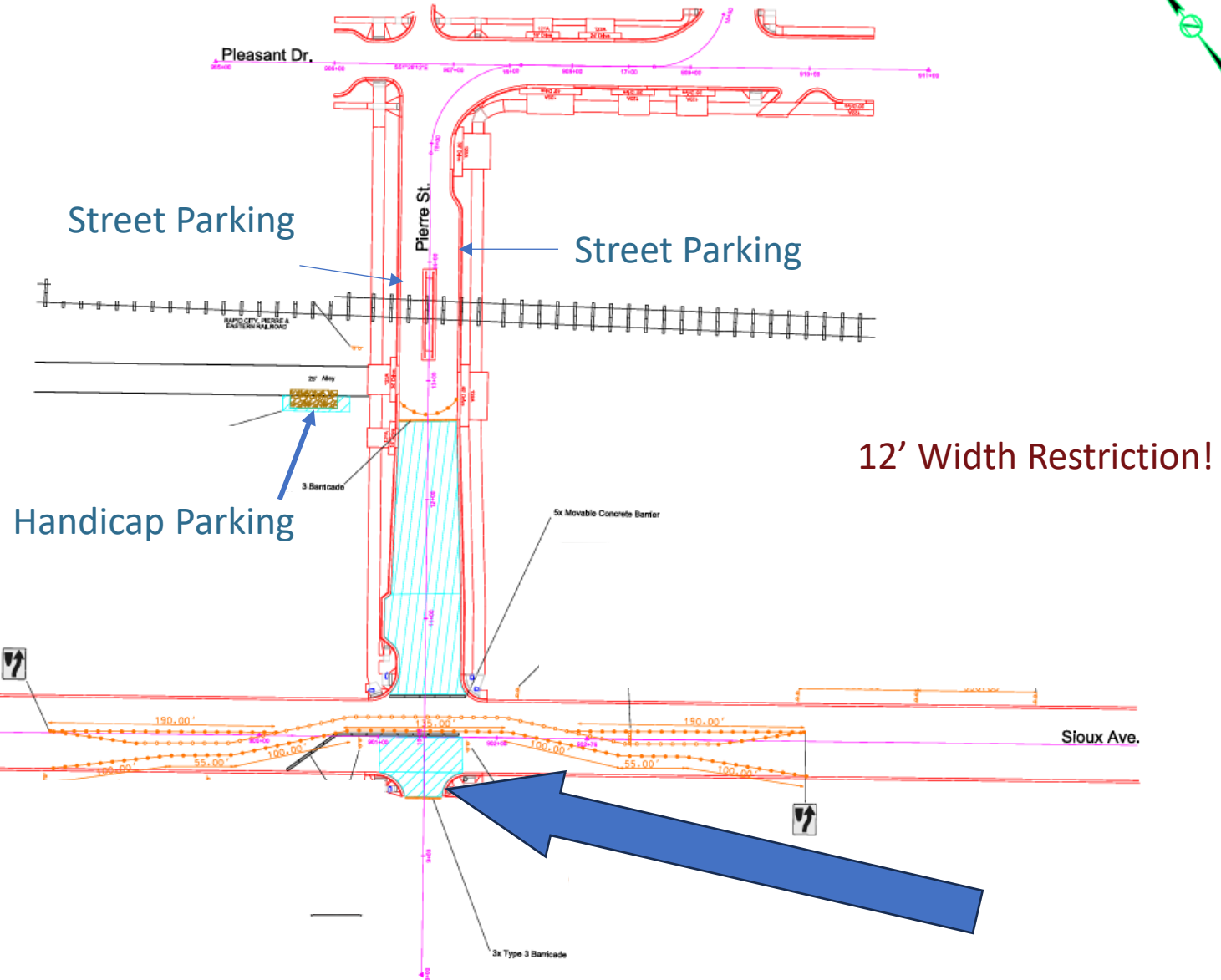
NOT TO SCALE

STATE OF SOUTH DAKOTA	PROJECT NH-CR 0014(185)229	SHEET C13	TOTAL SHEETS C46
Posting Date		08/06/2024	



Phase 1A
3/31 to 5/08/25

*Project timelines and progress goals are weather dependent and reliant on the contractors scheduling.

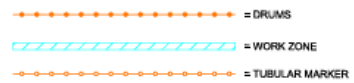


All drivable lanes on Sioux Ave. will be 12' wide at a minimum.

PHASE 1B LAYOUT

NOT TO SCALE

STATE OF SOUTH DAKOTA	PROJECT	SHEET	TOTAL SHEETS
	NH-CR 0014(185)229	C14	C46
Posting Date		08/06/2024	

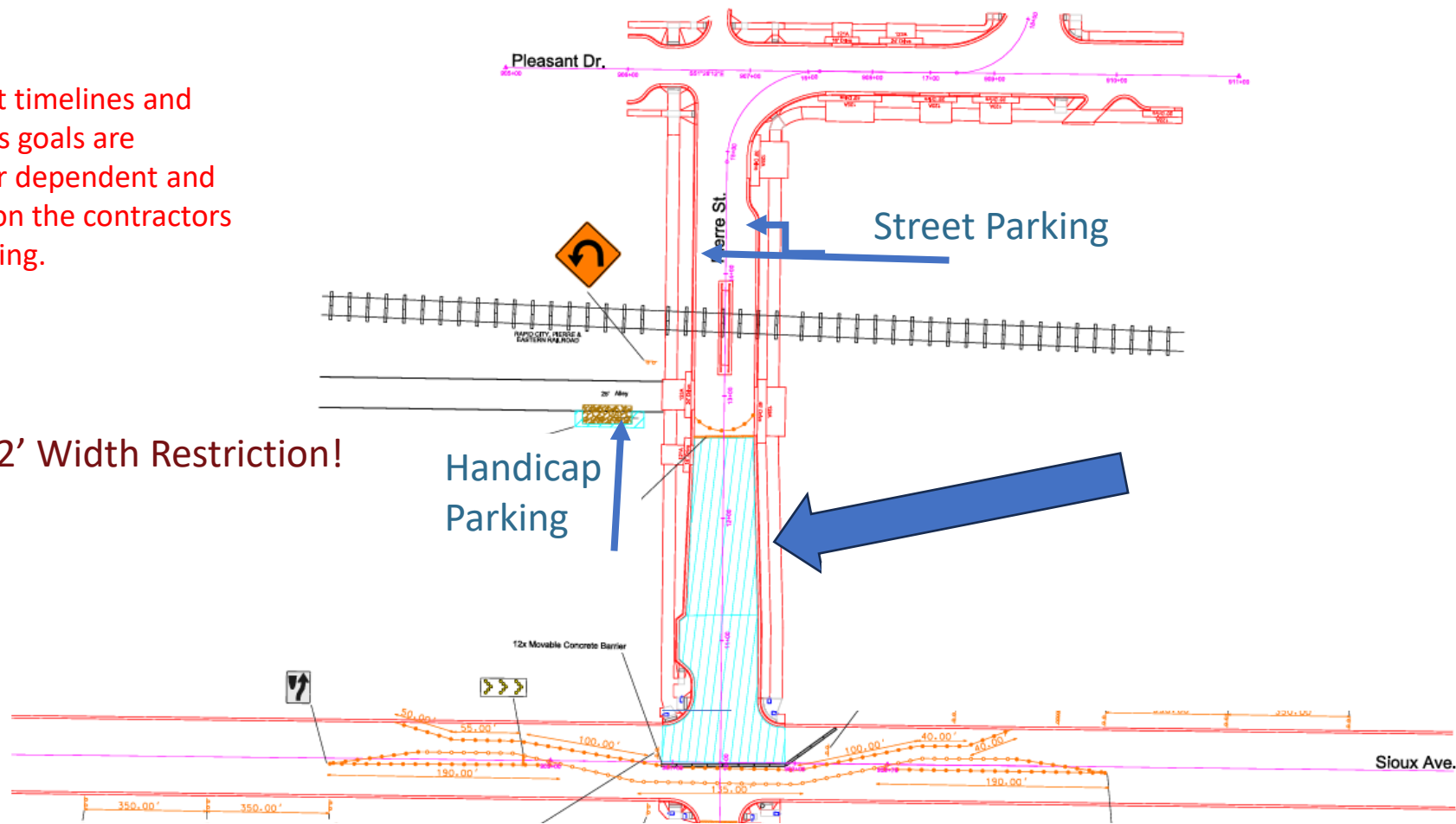


*Project timelines and progress goals are weather dependent and reliant on the contractors scheduling.

12' Width Restriction!

Handicap Parking

Street Parking

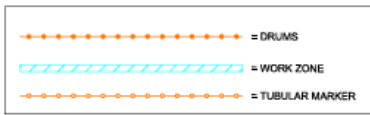


All drivable lanes on Si
12' wide at a minimum.

PHASE 1C LAYOUT

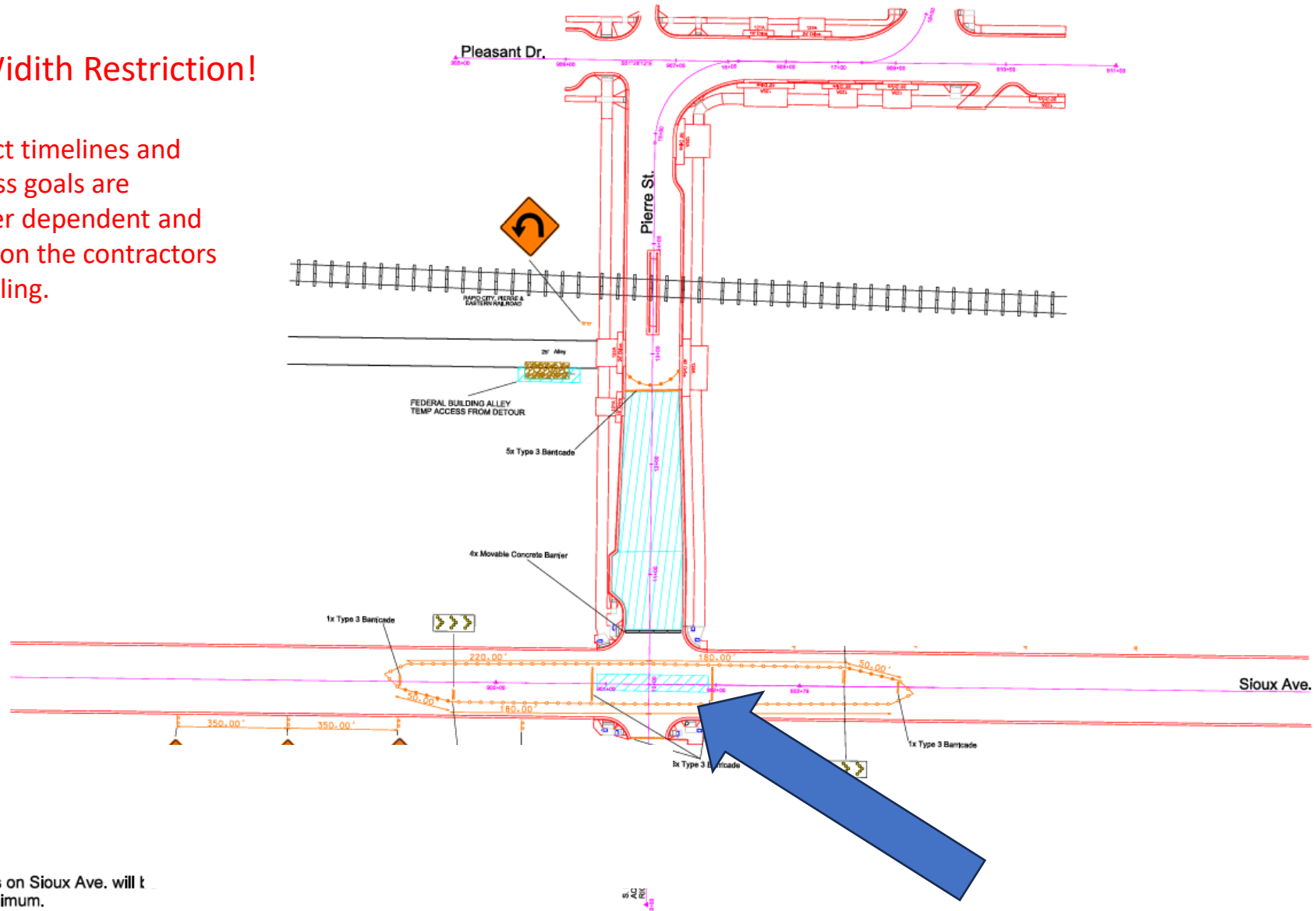
NOT TO SCALE

STATE OF SOUTH DAKOTA	PROJECT	SHEET	TOTAL SHEETS
	NH-CR 0014(185)229	C15	C46
Plotting Date: 08/06/2024			



12' Width Restriction!

*Project timelines and progress goals are weather dependent and reliant on the contractors scheduling.



All drivable lanes on Sioux Ave. will be 12' wide at a minimum.

Handicap and Street Parking

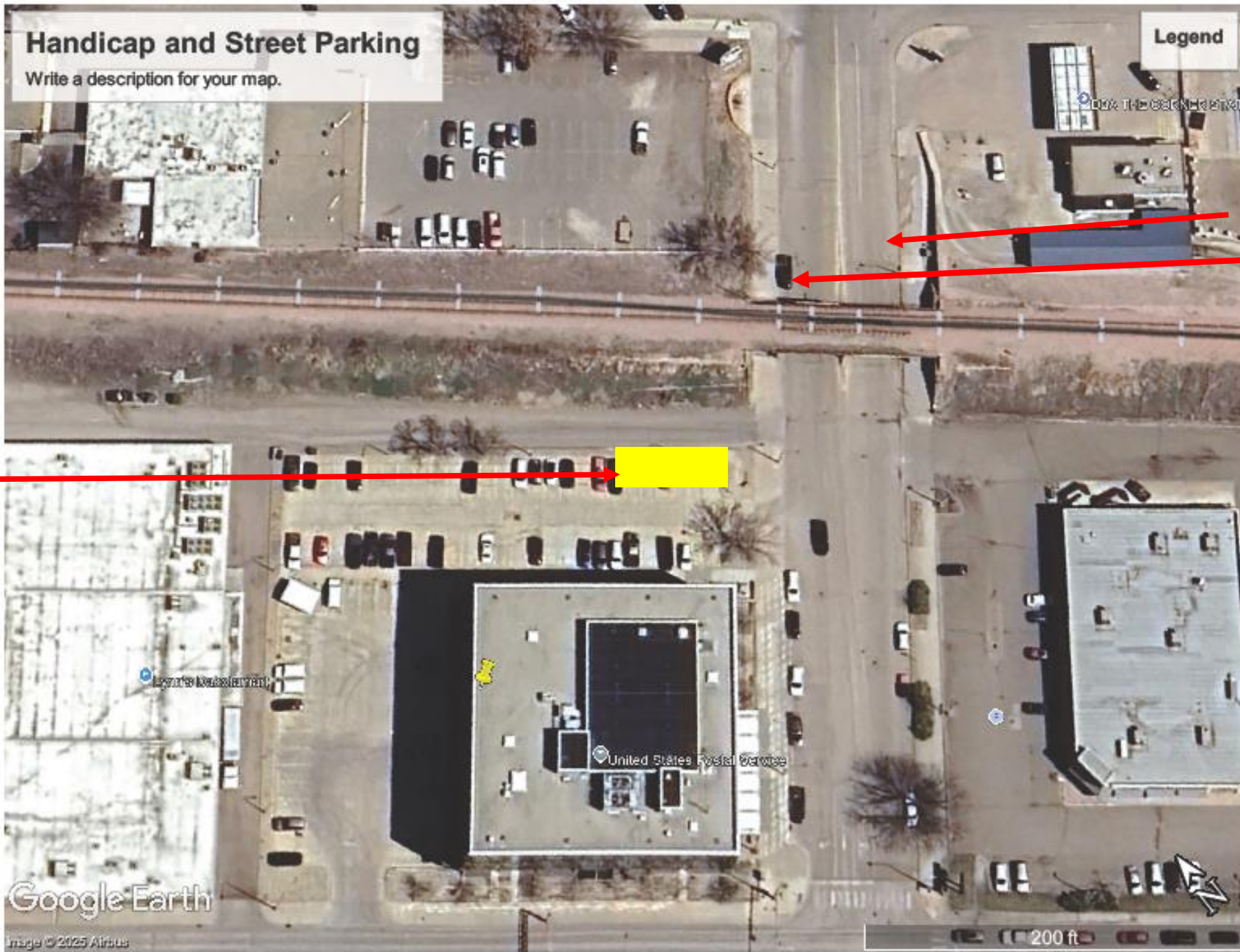
Write a description for your map.

Legend

Street Parking

Handicap
Parking

*Project
timelines and
progress goals
are weather
dependent and
reliant on the
contractors
scheduling.

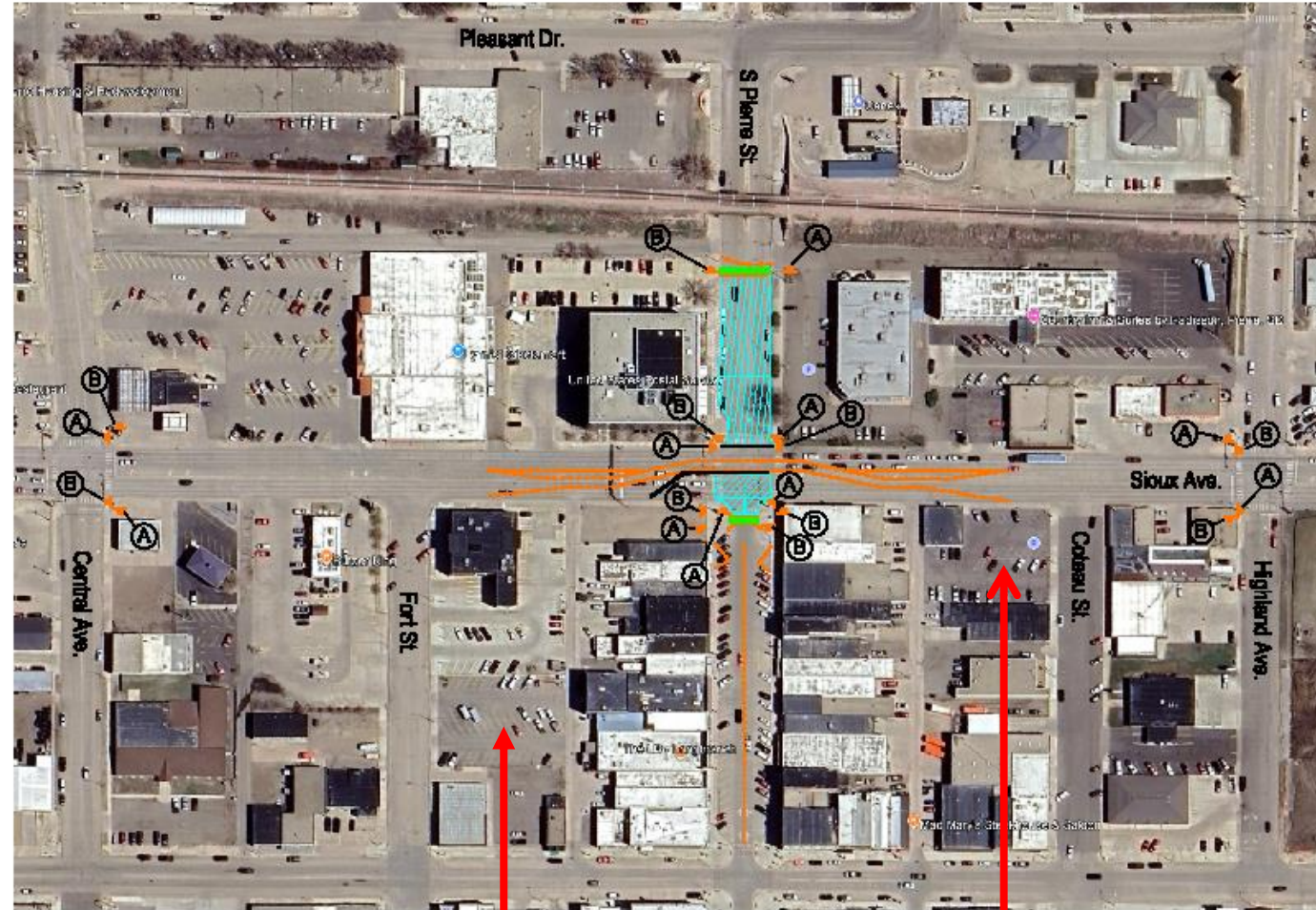
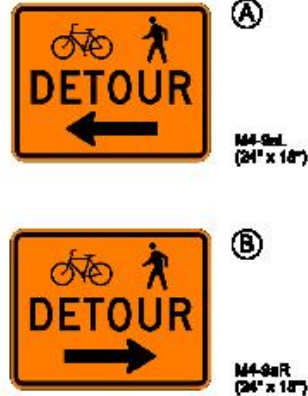


PHASE 1A/1B/1C PEDESTRIAN DETOUR

SHOWN FOR IMPLEMENTATION DURING PHASE 1A; NOT TO SCALE

STATUS OF HEALTH MEASURE	PRELIMINARY	REMARKS	TOTAL COUNT
	NH-CR 0014(18)228		
Posting Date:	08/02/2020		

- WORK ZONE
- PEDESTRIAN CROSSING AREA
- TRAFFIC CONTROL DEVICES



ITEMIZED LIST FOR TRAFFIC CONTROL SIGNS

SIGN CODE	SIGN DESCRIPTION	NUMBER	CONVENTIONAL ROAD		SQ-F
			SIGN SIZE	SOFT PEIN SIGN	
M4-9aL	PEDESTRIAN/BICYCLE DETOUR (ARROW)	9	24" x 10"	3.0	27.0
M4-9aR	PEDESTRIAN/BICYCLE DETOUR (ARROW)	9	24" x 10"	3.0	27.0
CONVENTIONAL ROAD TRAFFIC CONTROL SIGNS SQ-F					54.0

Public Parking

*Project timelines and progress goals are weather dependent and reliant on the contractors scheduling.

PHASES 1A-1C S PIERRE ST ONE-WAY CONFIGURATION

NOT TO SCALE

U-turn to return traffic to Dakota Ave.
(6 candlesticks)

3x Type 3 Barricade

Block off 4 stalls each side on
north end for U-turn (7 candlesticks each side)

NO
PARKING

*Create temporary
handicap stall w/
curb ramp

*17 candlesticks
denoting CL
(All candlesticks
under Traffic
Control,
Miscellaneous)

*Mask existing
arrow markings
at south end



NO
PARKING

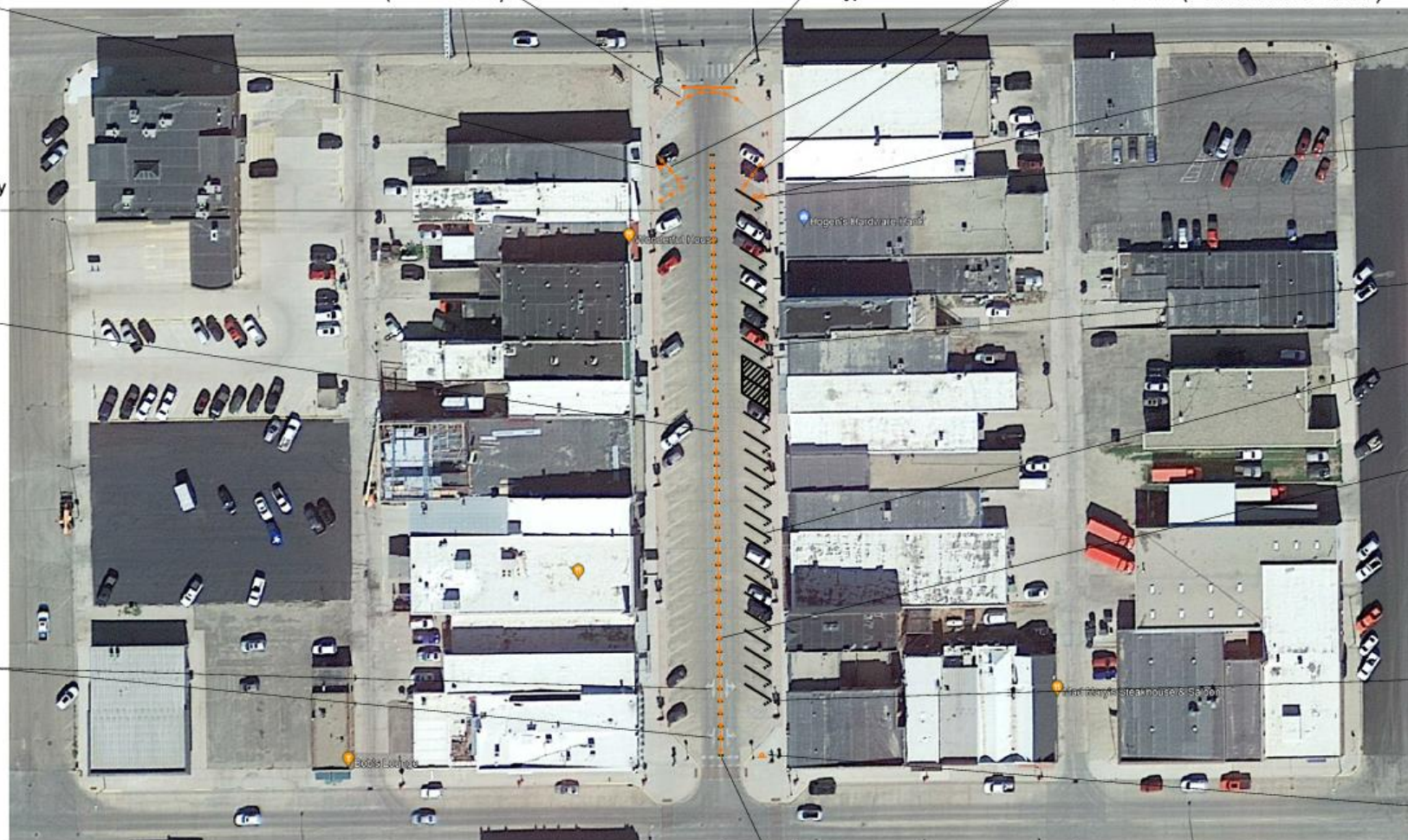
Rotate existing signs to
match mirrored parking
(Traffic Control,
Miscellaneous)

*Mask existing stall
markings and gore area

*Install temporary raised
4" yellow markers on
median (1x application)

*Install temporary raised
4" white markers to mirror
existing stall markings
(1x application)

SPEED
LIMIT
10

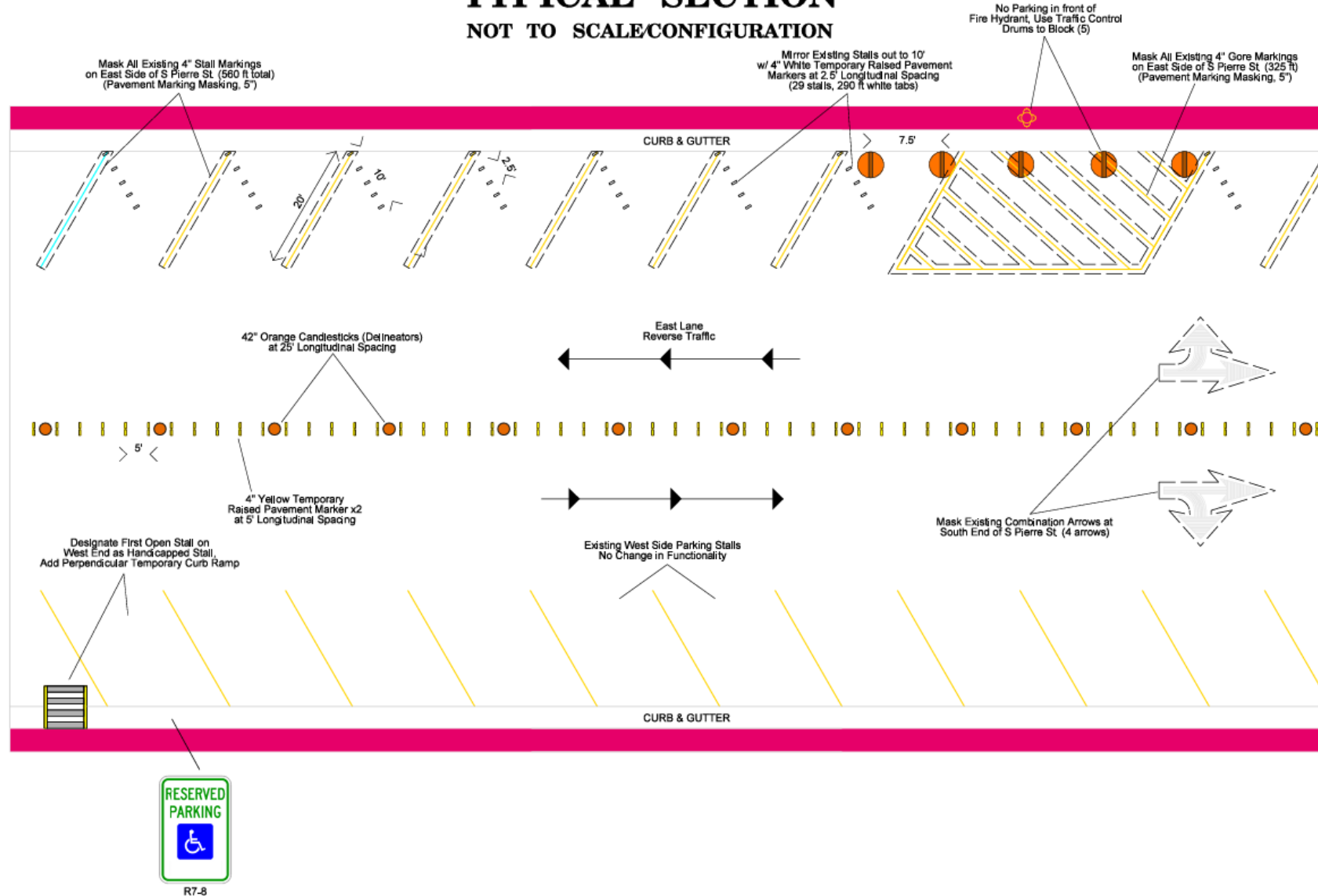


*Refer to Sheet C44 for further detailing; Phase 1A-1C S Pierre St. Typical Section.

*Project
timelines
and progress
goals are
weather
dependent
and reliant
on the
contractors
scheduling.

PHASE 1A-1C PIERRE ST. ONE-WAY CONFIGURATION TYPICAL SECTION NOT TO SCALE/CONFIGURATION

STATE OF SOUTH DAKOTA	PROJECT NH-CR 0014(185)229	SHEET C44	TOTAL SHEETS C46
Plotting Date:	06/05/2024		



File - ...02024_Temporary_Markings.dgn

*Project timelines and progress goals are weather dependent and reliant on the contractors scheduling.

Central

Detour to S. Pierre St.

Highland

*Project timelines and progress goals are weather dependent and reliant on the contractors scheduling.



Phase 1A, 1B and 1C Recap

*Project timelines and progress goals are weather dependent and reliant on the contractors scheduling.

- Intersection of Sioux Avenue scheduled to be fully open 7/03/2025
- 1B scheduled to be completed by 7/15/2025
- Traffic on South Pierre St will have 1-way configuration until 7/15/2025
- Pedestrian Traffic will be detoured from Sioux Avenue intersection to Central stoplight and to Highland stoplight.
- Pedestrian traffic is encouraged to use Central and Highland to avoid construction traffic by crossing Euclid Avenue to get to the Federal Building.

Phase 2A Overview (Pleasant to Capital)

- New Water Line and Services
- Storm Drain
- Partial Concrete surfacing with remainder to be asphalt
- Major communications line to be moved
- Signals at intersection of Capital and Euclid
- Capital intersection will be closed
- Pleasant Avenue East to West will be fully open
- Phase 2A will be worked on concurrent with Phases 1A,1B and 1C
- Phase 2A start 3/31/2025 with completion scheduled for 7/18/2025

*Project timelines and progress goals are weather dependent and reliant on the contractors scheduling.

Phase 2A

Write a description for your map.

Legend

As of 3/31/2025

*Project timelines and progress goals are weather dependent and reliant on the contractors scheduling.

St. Charles/
Bankwest access

Capitol AVE

St Charles Lounge

Pure Bliss Bakery & Cafe

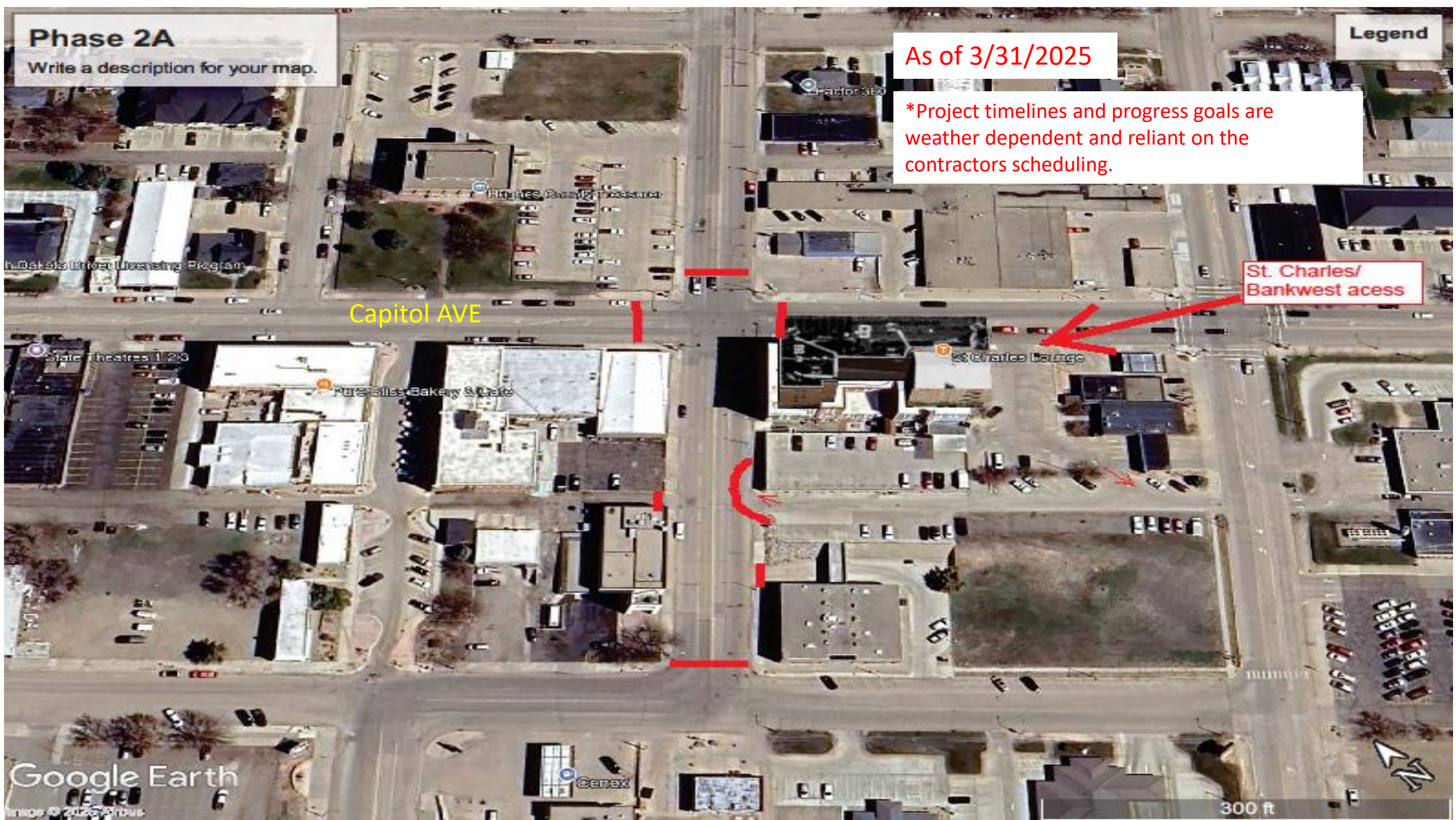
State Theatres 1, 2, 3

Google Earth

Images © 2025 Airbus

Genex

300 ft

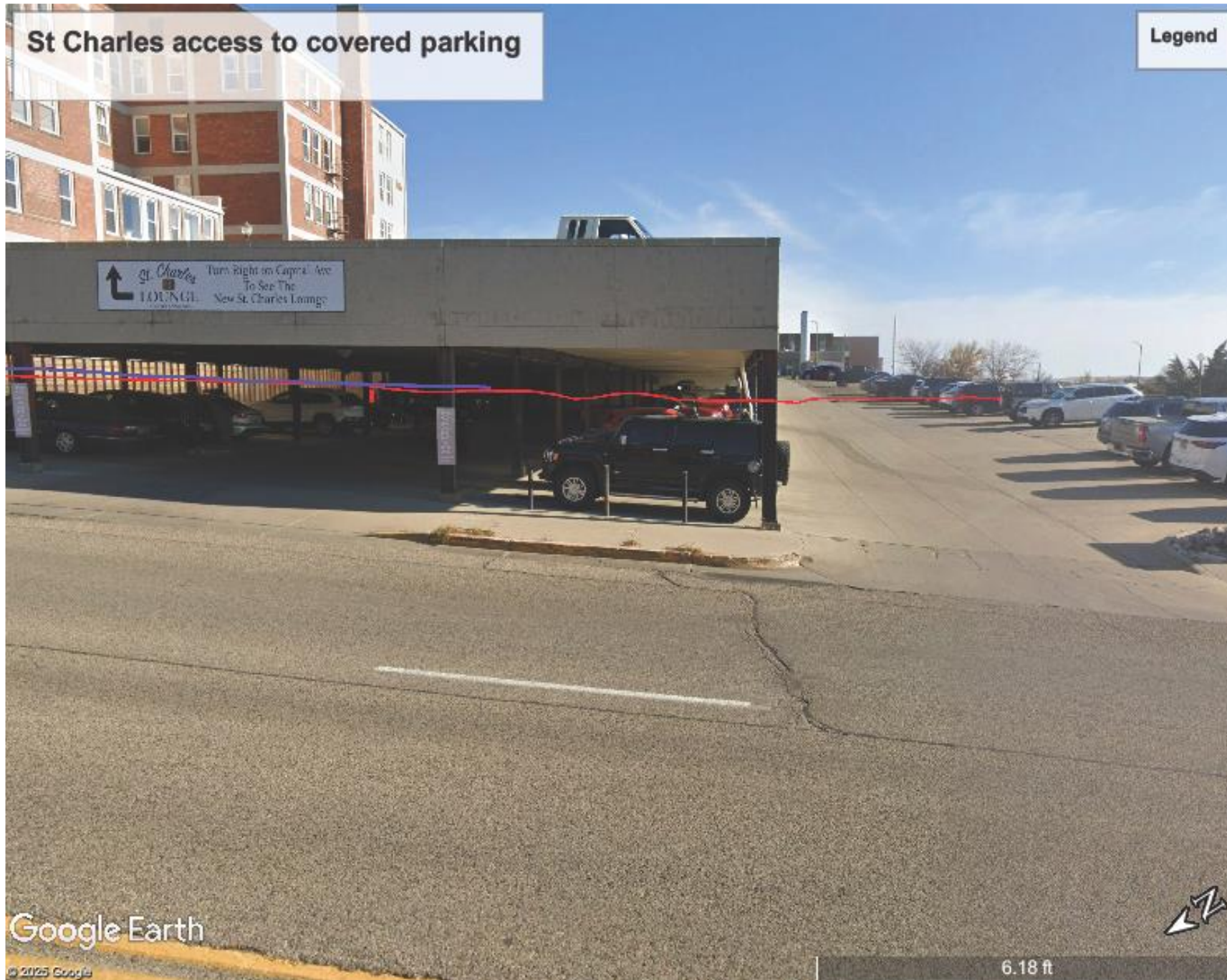


How to Access St. Charles covered parking

- Alley access from S. Highland Ave
- Entrance will be maintained
- Any interruptions to entrance will be communicated ahead of time

St Charles access to covered parking

Legend



Google Earth

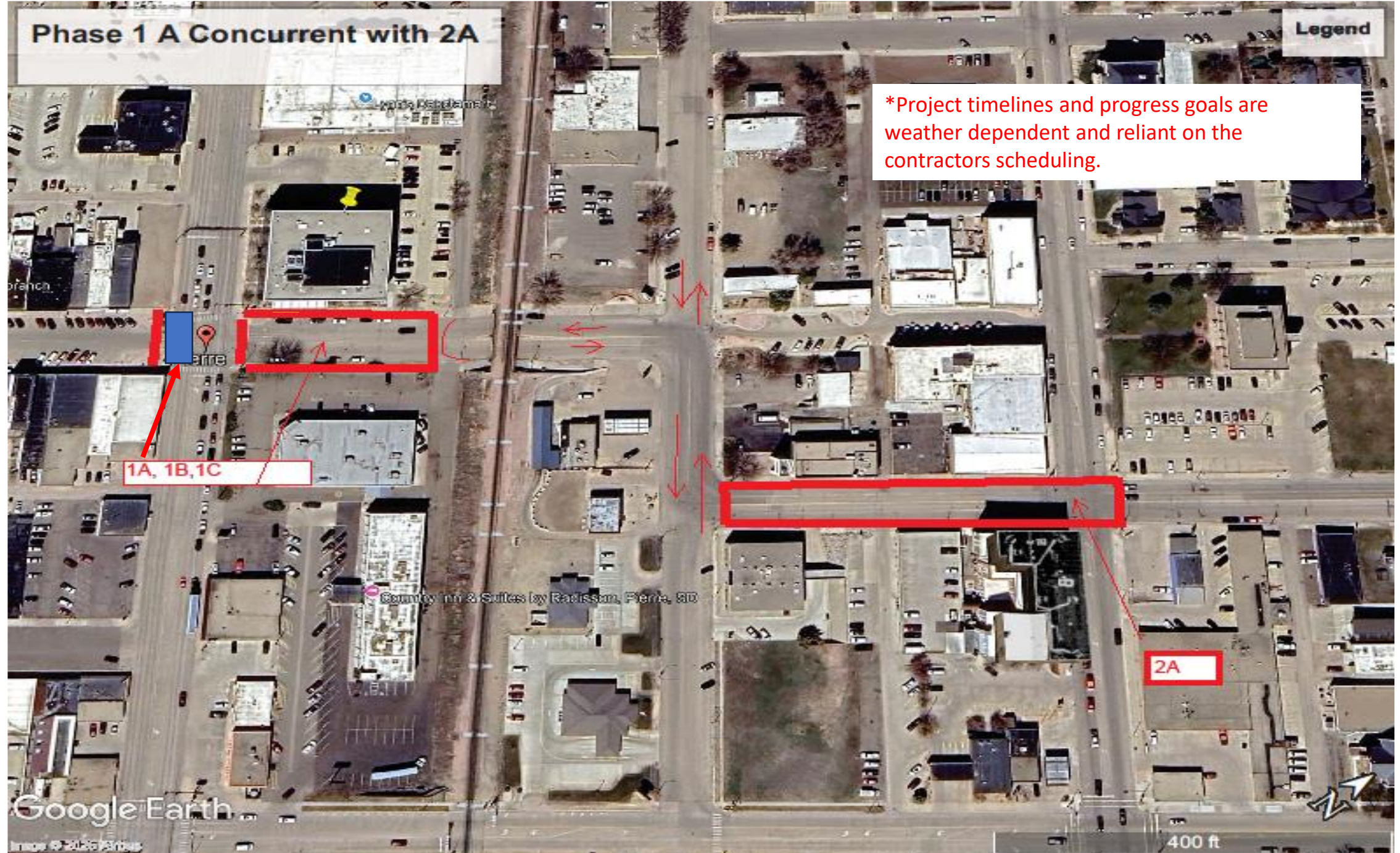
© 2025 Google

6.18 ft

Phase 1 A Concurrent with 2A

Legend

*Project timelines and progress goals are weather dependent and reliant on the contractors scheduling.



Phase 2A Recap

*Project timelines and progress goals are weather dependent and reliant on the contractors scheduling.

- Start date 3/31/2025
- End Date 7/18/2025
- Phase 1A will be concurrent with Phase 2A
- Intersection of Capitol will be closed
- Access to St. Charles covered parking will be maintained from Alley
- Music Store will have access on Pleasant
- When water is interrupted it will be a planned and communicated outage. Some exceptions are unmarked water lines that are hit.
- 2 weeks of brainstorming by Morris and the DOT to find a way to keep traffic flowing from the North



Phase

1D, (Half of Pleasant) 2A and 2B (S. Euclid to E. Prospect Ave)

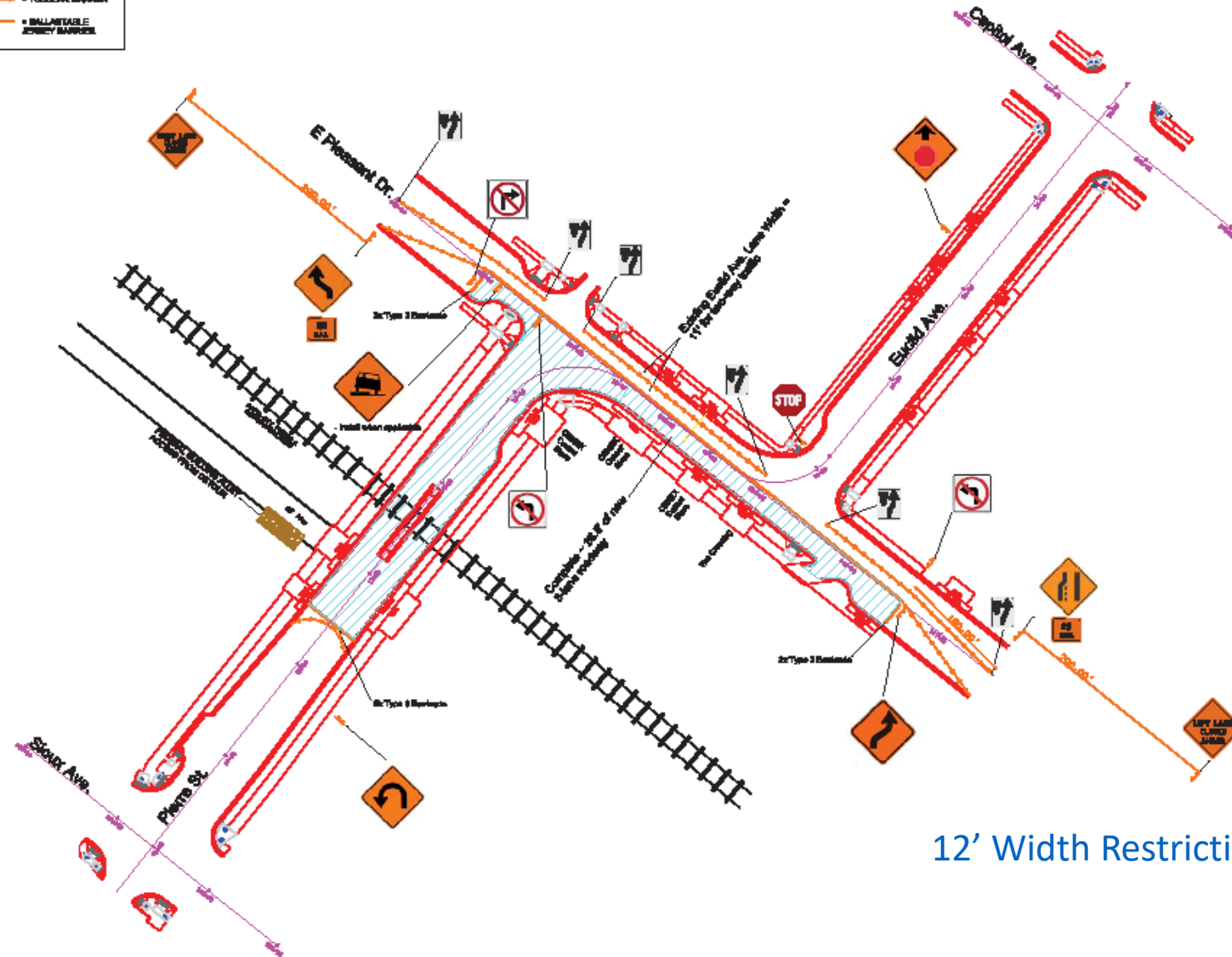
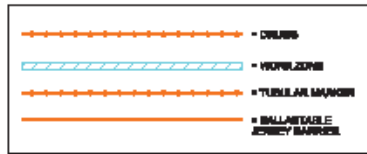
- 1D scheduled 7/16/2025 to 9/26/2025
- Phase 2A scheduled 3/31/2025 to 7/18/2025
 - 2B Scheduled 5/30/2025 to 8/13/2025
- 3 phases being worked on at the same time. 1D, 2A and 2B
- Access to the Federal Building from Sioux Avenue
- E. Pleasant Dr. will remain open with head-to-head traffic
- Capitol will open 7/18/2025

*Project timelines and progress goals are weather dependent and reliant on the contractors scheduling.



PHASE 1D LAYOUT

STATE OF NEW HAMPSHIRE	PROJECT NH-CR 0014(18)229	SHEET C17	TOTAL SHEETS C48
Planning Date: 08/06/2018			



12' Width Restriction!



PLAN SHEET - 1

FILE: \\NHCR\18\14\18\229\18001\18001.dwg

Phase 1D, 2A and 2B

Write a description for your map.

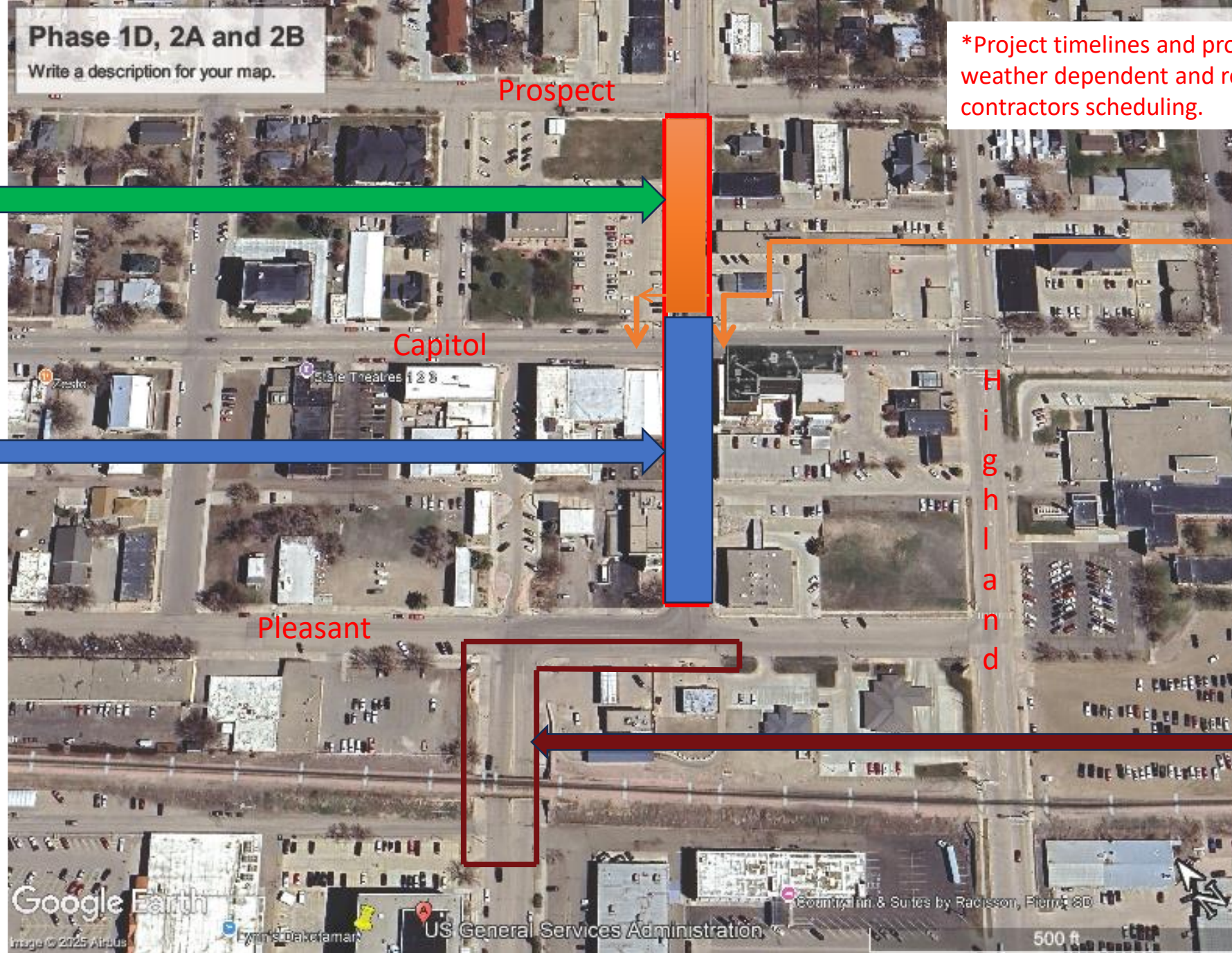
*Project timelines and progress goals are weather dependent and reliant on the contractors scheduling.

Phase 2B
5/30 to 8/13/25

Phase 2A
3/31 to 7/18/25

Capitol Closed
3/31 to 7/18/25

Phase 1D
7/16 to 9/26/25



Phase 1D, 2A and 2B Recap

- Phase 1D will have two way traffic on North side of Pleasant
- Access to Corner Station will be maintained on Pleasant
- Capitol will be closed until 7/18/2025 (will open as construction allows, temporary surfacing)
- Pleasant will close as crews get to intersection.
- Broadway will remain open
- Federal Building access is from Sioux Ave.
- Phase 1D scheduled completion 9/26/2025
- Phase 2 A scheduled completion 7/18/2025
- Phase 2 B scheduled completion 8/13/2025

*Project timelines and progress goals are weather dependent and reliant on the contractors scheduling.



Phase 1E (Pleasant Ave)

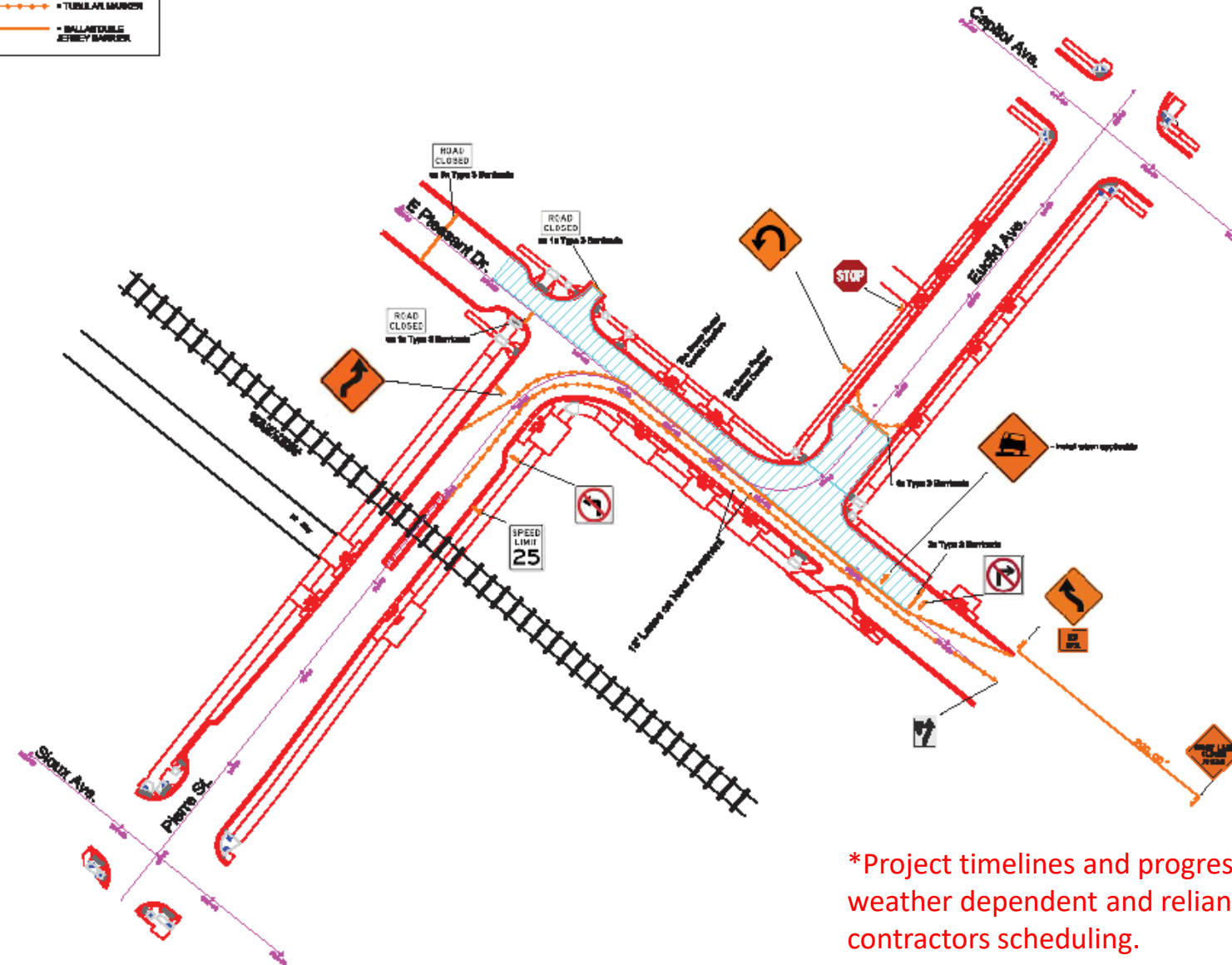
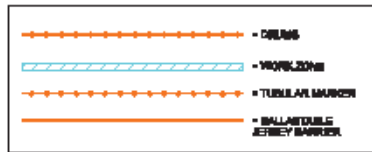
- Phase 1E Schedule 9/27/2025 to 11/21/2025
- E. Pleasant will be open for two way traffic from Highland Ave.
- Federal Building, Corner Station will have access from Sioux Ave.
- Upper Pierre Street will have closure at Pleasant. Alley will be open East and West.

*Project timelines and progress goals are weather dependent and reliant on the contractors scheduling.

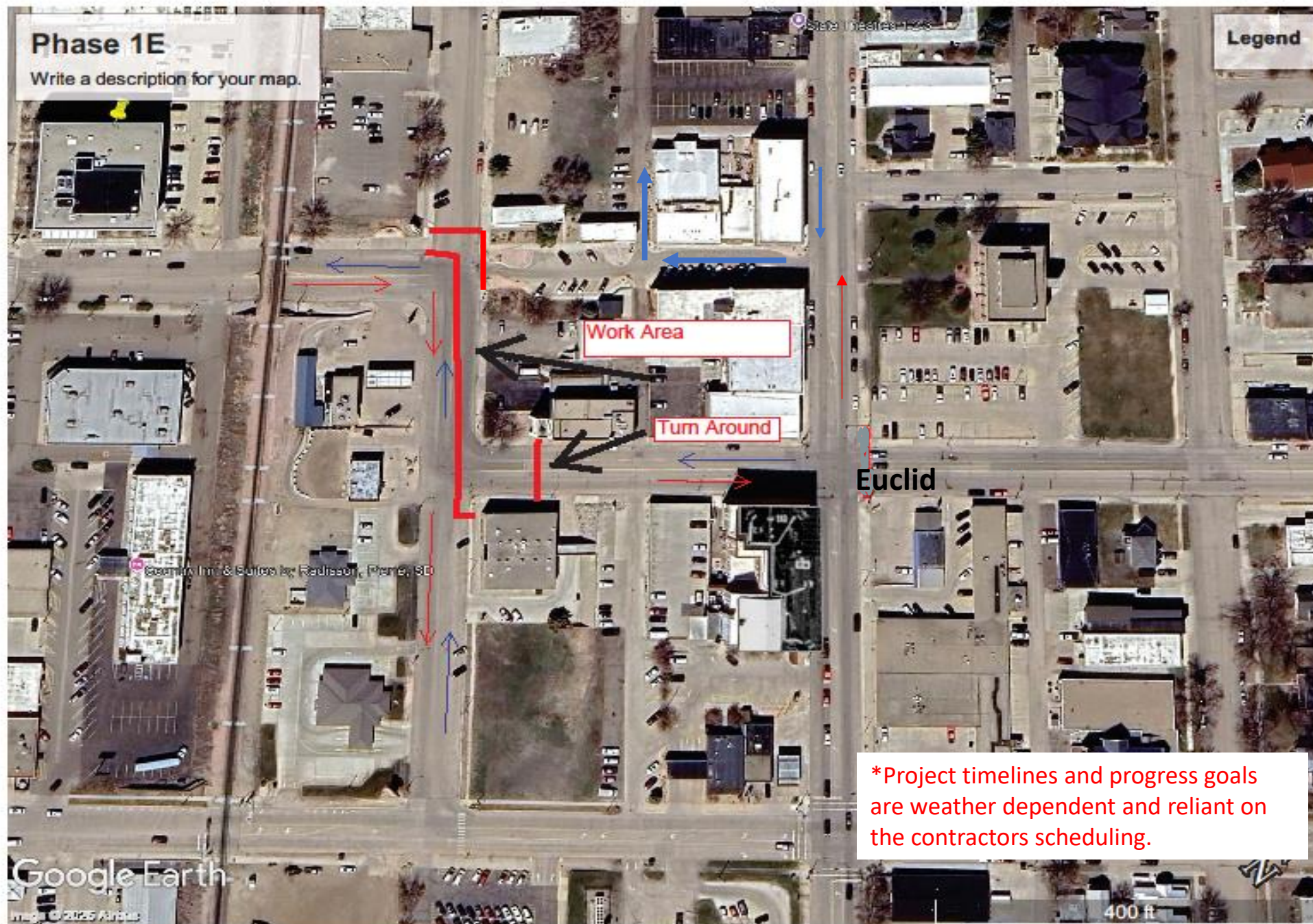


PHASE 1E LAYOUT

STATE OF NEW HAMPSHIRE	PROJECT NH-CR 0014(18)228	SHEET C18	TOTAL SHEETS C48
Posting Date:	09/24/2018		



*Project timelines and progress goals are weather dependent and reliant on the contractors scheduling.



Phase 1E Recap

- Phase 1E schedule 9/27/2025 to 11/21/2025
- End of Concrete, transition to asphalt
- Two way on South half of Pleasant Ave in front of Corner Station
- Sioux Avenue to Federal Building and Post Office fully open
- St. Charles covered parking fully open
- Turn around on Euclid at top of S curve

*Project timelines and progress goals are weather dependent and reliant on the contractors scheduling.



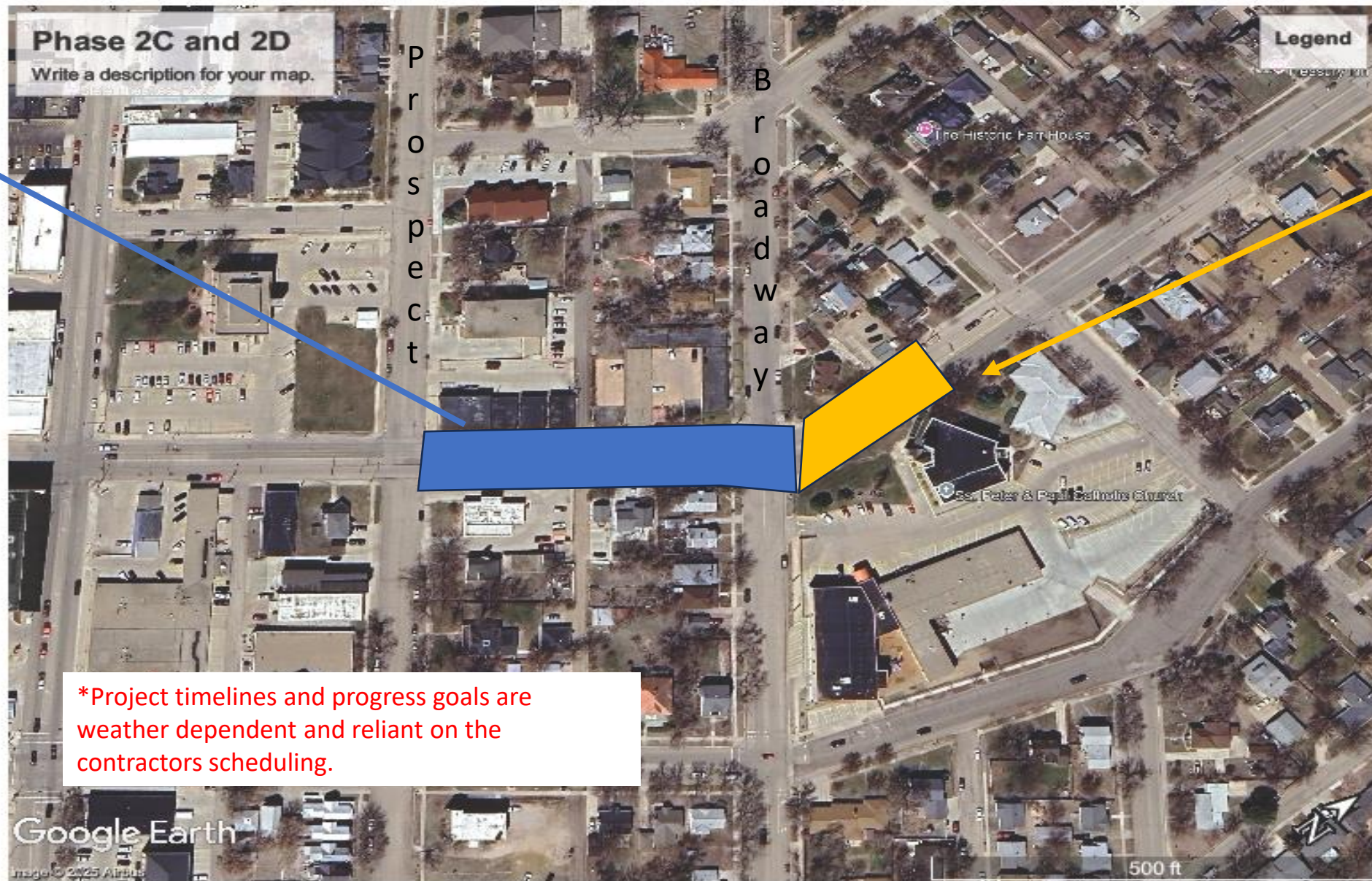
Phase 2C & 2D (Prospect to Broadway Ave.)

- Phase 2C Schedule 7/19 to 10/09/2025
- Phase 2D Schedule 9/19 to 11/21/2025

*Project timelines and progress goals are weather dependent and reliant on the contractors scheduling.



Phase 2C
7/19 to 10/9/2025



Phase 2D
9/10 to
11/21/2025

Wynoka Street Outfall 10/09 to 11/22/2025



Wynoka Street Drainage

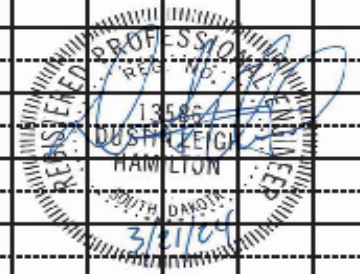
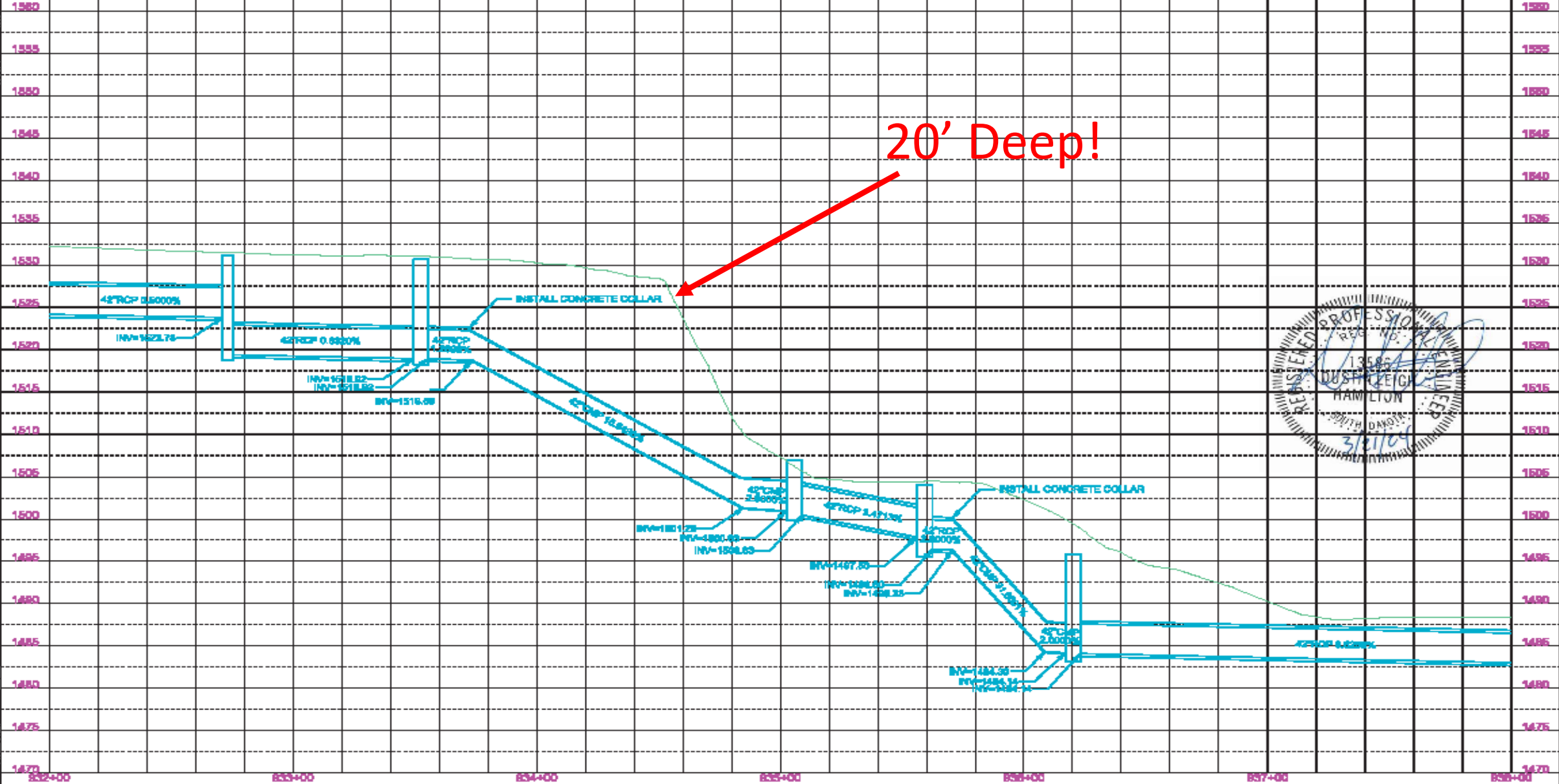
STATE OF SOUTH DAKOTA	PROJECT	SHEET	TOTAL
	NH-CR-0014(185)229	B62	B151

Plotting Date: 02/18/2014

HDR




Elevation

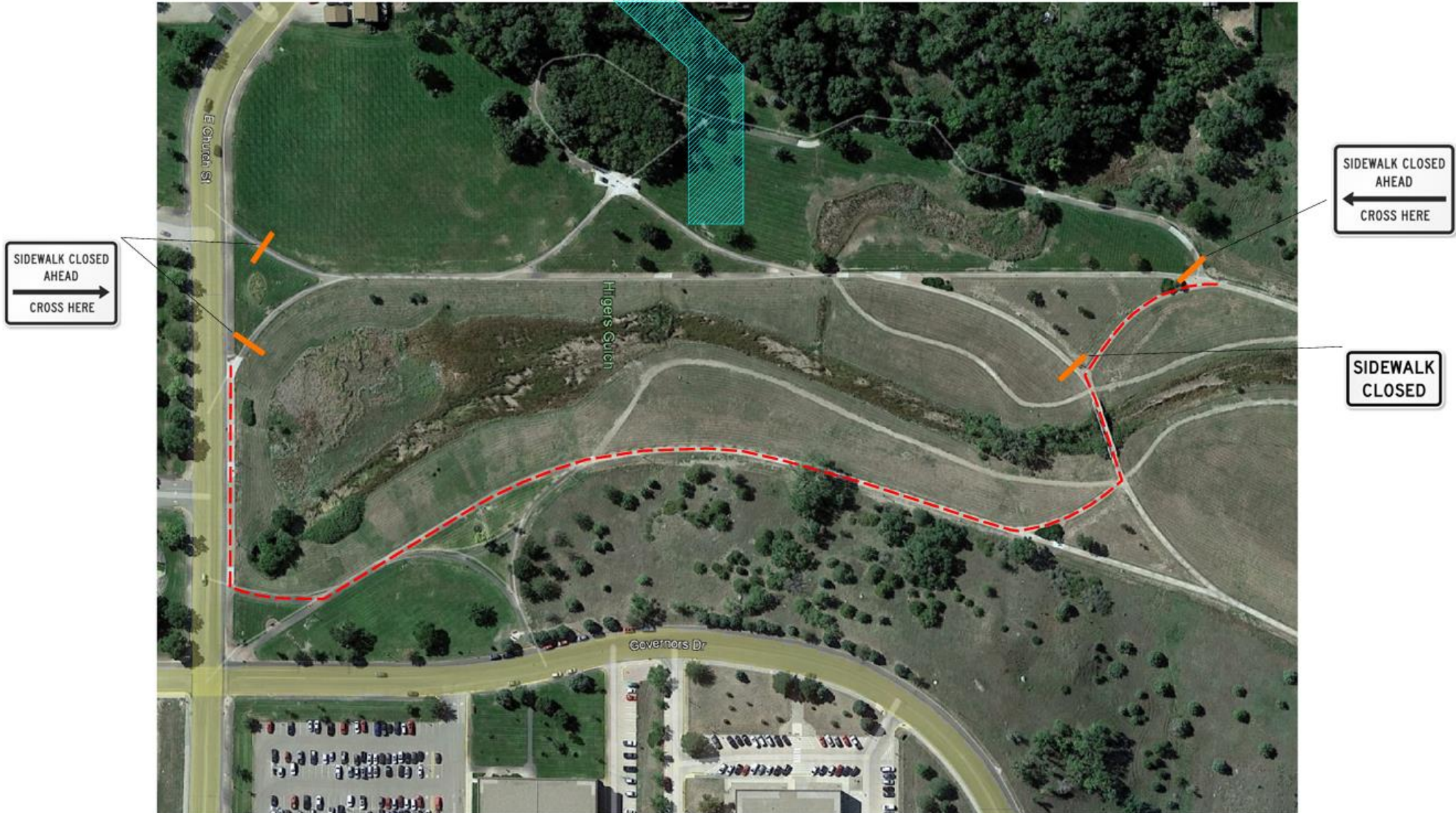
Stationing



PEDESTRIAN DETOUR – HILGERS GULCH

STATE OF SOUTH DAKOTA	PROJECT	SHEET	TOTAL SHEETS
	NH-CR 0014(185)229	C40	C46
Posting Date:		06/05/2024	

-  = Barrier
-  = Ped Detour Route
-  = Work Zone



Plot Scale: 1:200

Drawn: TSP25584

Project Key Dates

- Project Start- March 31st, 2025
- July 3rd, 2025, Sioux Avenue fully open (Phase 1A and 1C)
- Phase 1B by Post Office Fed Bldg. open 7/15/2025
- Lower Pierre Street fully open 7/15/2025
- Phase 1D (alley by Fed Bldg. to E. Pleasant) complete 9/26/2025
- Phase 1E (E. Pleasant to Music Store) complete 11/21/2025
- Phase 2A (Music Store to N. side of Capitol) complete 7/18/2025
- Capitol fully open 7/18/2025
- Phase 2B (N. Side of Capitol to Prospect) complete 8/13/2025
- Phase 2C (Prospect Ave. to Broadway Ave) complete 10/09/2025
- Phase 2D (Between Broadway Ave. and Wynoka) complete 11/21/2025

*Project timelines and progress goals are weather dependent and reliant on the contractors scheduling.



U.S. Highway 14/83 (Euclid Avenue)

Pierre

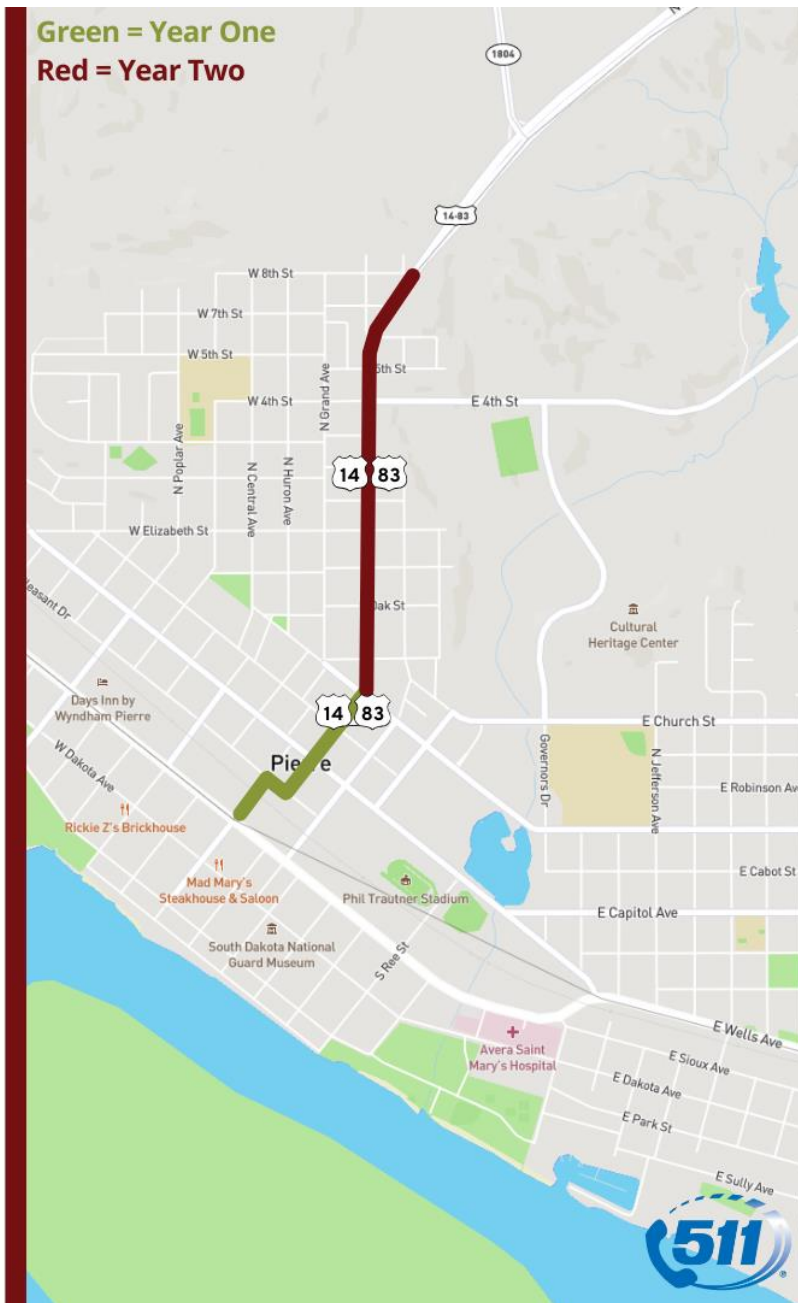
Project Highlights:

- Urban Grading
- Curb and Gutter
- Traffic Signals

Project Website:



Green = Year One
Red = Year Two



Project Website:

<https://dot.sd.gov/euclid>

Text Notifications:

For updates on major traffic changes during the project, subscribe to a free text-in service. To subscribe, text "EUCLID" to **605-566-4041**. Subscribers can unsubscribe at any time.

SD511 Traveler Information:

For the latest on road and weather conditions, road closures, construction work zones, commercial vehicle restrictions, and traffic incidents, please visit <https://sd511.org> or dial 511.

Social Media:

<https://www.facebook.com/southdakotadot>

<https://x.com/SouthDakotaDOT>

<https://www.instagram.com/southdakotadot>

<https://www.linkedin.com/company/southdakotadot>





Project Website:



Project Website:

<https://www.morris-inc.com/euclid-avenue-reconstruction-project/>

Social Media:

<https://www.facebook.com/morrisincpierre>

<https://www.instagram.com/morrisincsd/>

Weekly Meeting:

Weekly Meetings to be held at AGC Building at 300 E Capitol Ave, Suite 1. Enter through side door on S. Highland Street.

Time:

Day:

THANK YOU

