

APPENDIX M

NOVEMBER 22, 2011 PUBLIC INFORMATION
MEETING ITEMS

**Supplemental Environmental Assessment and
Proposed Section 4(f) *De Minimis* Impact Finding
East Side Corridor (SD100) Public Meeting/Open House**

Date: November 22, 2011

Time: 5:30 P.M. – 7:00 P.M.

Place: Gloria Dei Church
5500 E. 57th Street Sioux Falls, SD 57108

The South Dakota Department of Transportation (SDDOT) will hold an open house style public meeting to discuss and receive public input on the SD100 (Eastside Corridor) and Proposed Section 4(f) *De Minimis* Impact Finding.

The purpose of this public information meeting/open house is to present and receive comments on the alternatives developed for SD100. The open house will be informal, with one on one discussion available with SDDOT and Consultant staff. A short presentation will take place at 6:00 p.m. SDDOT will be available to discuss the alternatives and answer your questions. During this time, you will also have the opportunity to present written comments. Written comments will be accepted until December 21, 2011.

Notice is further given to individuals with disabilities that this open house / public meeting is being held in a physically accessible place. Please notify the SDDOT ADA Coordinator at least 48 hours prior to the open house meeting if you have special needs for which this department will need to make arrangements. The telephone number for making special arrangements is 605-773-3540 or 1-800-877-1113 (Telecommunication Relay Services for the Deaf).

Those who cannot attend the meeting or desire further information regarding the study may contact Tom Lehmkuhl at (605) 773-3180 or email at tom.lehmkuhl@state.sd.us.

**Supplemental Environmental Assessment and
Proposed Section 4(f) *De Minimis* Impact Finding
East Side Corridor (SD100) Public Meeting/Open House**

Date: November 22, 2011

Time: 5:30 P.M. – 7:00 P.M.

Place: Gloria Dei Church
5500 E. 57th Street Sioux Falls, SD 57108

The South Dakota Department of Transportation (SDDOT) will hold an open house style public meeting to discuss and receive public input on the SD100 (Eastside Corridor) and Proposed Section 4(f) *De Minimis* Impact Finding.

The purpose of this public information meeting/open house is to present and receive comments on the alternatives developed for SD100. The open house will be informal, with one on one discussion available with SDDOT and Consultant staff. A short presentation will take place at 6:00 p.m. SDDOT will be available to discuss the alternatives and answer your questions. During this time, you will also have the opportunity to present written comments. Written comments will be accepted until December 21, 2011.

Notice is further given to individuals with disabilities that this open house / public meeting is being held in a physically accessible place. Please notify the SDDOT ADA Coordinator at least 48 hours prior to the open house meeting if you have special needs for which this department will need to make arrangements. The telephone number for making special arrangements is 605-773-3540 or 1-800-877-1113 (Telecommunication Relay Services for the Deaf).

Those who cannot attend the meeting or desire further information regarding the study may contact Tom Lehmkuhl at (605) 773-3180 or email at tom.lehmkuhl@state.sd.us.

Tom Lehmkuhl
700 E. Broadway Ave.
Pierre, SD 57501

<Landowner>
<Address>
<City>, <State> <Zip Code>

Tom Lehmkuhl
700 E. Broadway Ave.
Pierre, SD 57501

<Landowner>
<Address>
<City>, <State> <Zip Code>

**SOUTH DAKOTA DEPARTMENT OF TRANSPORTATION
NOTICE OF PUBLIC INFORMATION MEETING/ OPEN HOUSE**

Supplemental Environmental Assessment and Proposed Section 4(f) *De Minimis* Impact Finding

East Side Corridor (SD100)
I-29/County Road 106 (Exit 73) to South of 26th Street
Lincoln and Minnehaha Counties

Date: November 22, 2011

Time: 5:30 pm – 7:00 pm

Place: Gloria Dei Lutheran Church
5500 E. 57th Street
Sioux Falls, SD 57108

The South Dakota Department of Transportation (SDDOT) will hold an open house style public meeting to discuss and receive public input on the above project. The open house will be informal, with one on one discussion with SDDOT and Consultant staff.

A presentation will take place shortly after 6:00 p.m. Topics will include the Eastside Corridor (SD100) and Proposed Section 4(f) *De Minimis* Impact Finding. SDDOT staff will be available with displays to discuss the proposed project and answer your questions. During this time, you will also have the opportunity to present written comments. Written comments will be accepted until December 21, 2011.

Information will be available on the acquisition of right-of-way, relocation assistance, and the environmental, social and economic effects of the project's location and design.

Notice is further given to all individuals with disabilities that this meeting is being held in a physically accessible place. Please notify the SDDOT ADA Coordinator at least 48 hours prior to the open house meeting if you have special needs for which this department will need to make arrangements. The telephone number for making special arrangements is (605) 773-3540 or 1-800-877-1113 (Telecommunication Device for the Deaf).

All persons interested in SD100 are invited to attend this meeting to share your views and concerns any time between 5:30 p.m. and 7:00 p.m.

For further information regarding this project, contact Mark Leiferman, Chief Roadway Design Engineer at (605) 773-3433, Shannon Ausen, City of Sioux Fall at (605) 367-8601, or Steve Hoff, HDR at (605) 977-7743.

Information presented at the Public Meeting/Open House will be posted on the SDDOT web site after the meeting at http://www.sddot.com/pe/projdev/planning_publicmeet.asp.

Notice published twice at the total approximate cost of_____.

PUBLIC INFORMATION MEETING/OPEN HOUSE ATTENDANCE - November 22, 2011

- PLEASE PRINT -

Name	Address	City, State ZIP
TERRY KELLER	700 E Broadway, SDDOT	Pierre SD 57501
Darin Johnson	SDDOT - Sioux Falls	
CARY CLELAND	SDDOT - Sioux Falls	SF.
PAT ANDERSON	47042 W. 85 th	S.F.
Paul Oppold	27044 Western Ave.	S.F. S.D. 57108
Al Jensen	1425 WESTWARD Ho AL	SF SD 57105
Tim Schmitt	4208 E. Thornwood Pl	" " 57103
Mick Blum	6200 E. 23rd St	57110
Wade Behm (Lloyd Co)	3130 W 57 th St Suite 112	SF SD 57108
Jolene Erickson	7513 W Leah St	SF SD 57106
Burdell Engstrom	47771 69th ST	SF SD 57108
Al Koetger	3808 S. Camellia Ave	SF SD 57110
Roger Miron		SF SD
Kimberly Brandon	3307 S Less Drive	SX SD
Ray Ujets	26010 478 th Ave	Brandon
Bruce Ujets	26004 478 th Ave	Brandon
Sharon Lee	3308 S. Lisa Dr.	Sioux Falls 57110
Lowell Richards	108 W. Fir Street	Brandon, 57005

PUBLIC INFORMATION MEETING/OPEN HOUSE ATTENDANCE - November 22, 2011

- PLEASE PRINT -

Name	Address	City, State ZIP
Craig Smith	5316 W. 60th Street W	Sioux Falls, SD 57107
Rebecca Baker	6300 S Old Village, Suite	Si Falls, SD 57108
MARION BARBER		Pierre, SD 57501
Tom Lehmküh	SDDOT ~ Pierre, SD	Pierre, SD 57501
Brooke White	SDDOT	SF, SD 57107
RICHARD HANSON	47303-221st St. S.F.S.D	SF SD 57108
Robert L. Prager	4500 S. Minn. Ave	SF 57105
Dan Anderson	7800 E. 41st Street	SF SD 57110
Allan Bonnema	104 N. Main Street	Canton, SD 57013
ALICE ENGVENSON	47771 69th St	SF SD 57108
Tim Holbeck	Harrisburg School	Harrisburg SD
Merv Kramer	6800 E Maple, SF Falls, SD	
Brian Scott	47134 258th St SF SD	
DICK BECK	26830 480th S.F.S.D	S.F. SD. 57108
Judy Richards	108 W. Fiv pan	Brandon SD 57005
F.A. SYMSVOLL	5318 E. Pop Fly PL	Sx Falls
M.J. Samsvold	" "	" "
Joe Burns	3300 S Lisa Dr	" "



**Information Sheet for Public Information Open House
East Side Corridor (SD100): I-29 to South of 26th St.
November 22, 2011**



Questions and Answers

Question: What is an Environmental Assessment (EA)?

Answer: An EA is an assessment of the possible positive or negative impact that a proposed project may have on the environment and on properties along the project. The purpose of the EA is to ensure that decision makers consider the ensuing environmental and property impacts when developing the scope of a project.

Question: What is the East Side Corridor (SD100)?

Answer: SD100 will be a 17-mile limited-access principal arterial roadway from I-29 Exit 73 (Tea Exit) to I-90 Exit 402 (Timberline Road). Access to the corridor will be minimum one mile spacing from Tallgrass Avenue to 41st Street, one-half mile spacing from 41st Street to Madison Street, and one mile spacing from Madison Street to 60th Street N.

Question: Why is there both half-mile and one-mile access?

Answer: Access was determined primarily by future land use and also through traffic projections. The land adjacent to SD100 from 26th Street and Maple Street has previously been zoned commercial; therefore, half-mile access is the standard. Access management practices were thoroughly considered to preserve traffic operations throughout this corridor.

Question: With access at half-mile or one-mile spacing, how will I get in or out of my property?

Answer: Although the ultimate goal of the SD100 corridor is to provide access at the spacing's listed above, access to existing property may be maintained either via temporary direct access to the corridor or through alternate routes.

Question: When will I know if I will have direct access or alternate access out of my property?

Answer: As the South Dakota Department of Transportation progress with design of segments of the corridor, SDDOT representatives will contact and discuss questions and concerns you may have and further discuss the scope of the project including impacts to your property, including right-of-way and temporary easement needs and schedule.

Question: When will construction south of 57th Street begin?

Answer: The only project along the corridor that is currently scheduled (for 2012) is from south of 26th Street to south of 57th Street. Construction along the remainder of the corridor will depend on primarily on funding. Currently no other projects are scheduled.

Question: Why was the project separated into a southern segment and northern segment with respect to the Environmental Assessment?

Answer: When the project was first presented to the public, the entire corridor was considered one project. A project of this magnitude cannot proceed without an EA approved by the Federal Highway Administration (FHWA). Therefore, the ability to move forward with the construction project from south of 26th Street to south of 57th Street could not occur until the EA document covering the entire corridor was approved. Currently, the City of Sioux Falls is in the process of identifying potential locations for the relocation of the rail yard from downtown Sioux Falls and one of the potential sites is along Rice Street and in close proximity to SD100. Due to the unknowns related to relocating the rail yard, there would be delays in approving the entire corridor. For that reason, the SDDOT has decided to move forward with a Southern Segment Supplemental EA to avoid issues and delays related to the rail yard relocation and to allow construction of the project from south of 26th Street to south of 57th Street in 2012.

Completed Steps and Next Steps

1993

East Side Corridor alignment study

May 2003

Environmental Assessment approved and signed

October 2005

SDDOT began corridor preservation

February 2006

Re-evaluation of alignment

November 22, 2011

Public Open House

2012 Construction Season

Construction of SD100 from south of 26th St. to south of 57th St.

More Questions?

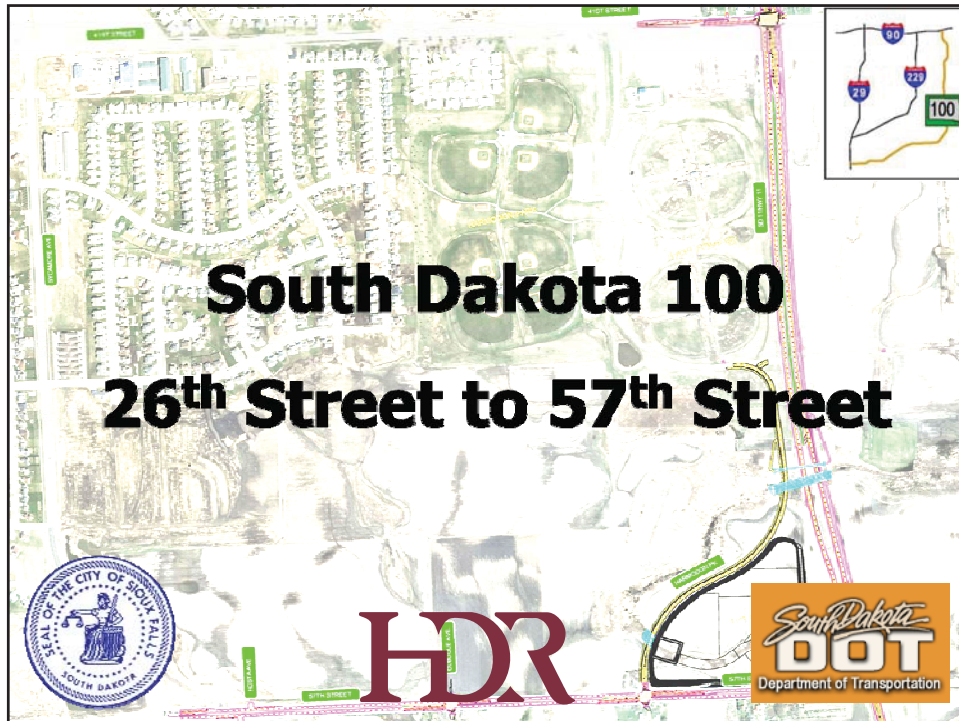
Contact:

Mark Leiferman, PE
SDDOT
Phone: 773-3433
mark.leiferman@state.sd.us

Shannon Ausen, PE
City of Sioux Falls
Phone: 367-8601
sausen@siouxfalls.org

Steve Hoff, PE
HDR Engineering, Inc.
Phone: 977-7740
steve.hoff@hdrinc.com

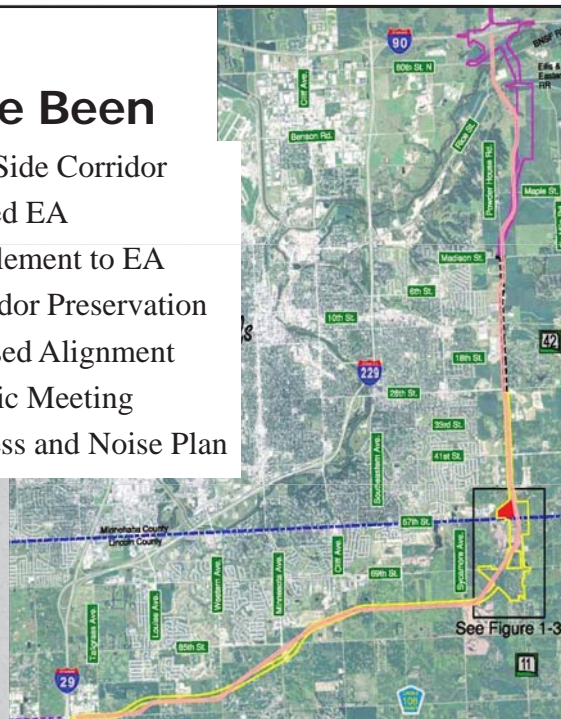
See also project web site at:
<http://www.sddot.com/sd100/pi.asp>



SD100 –

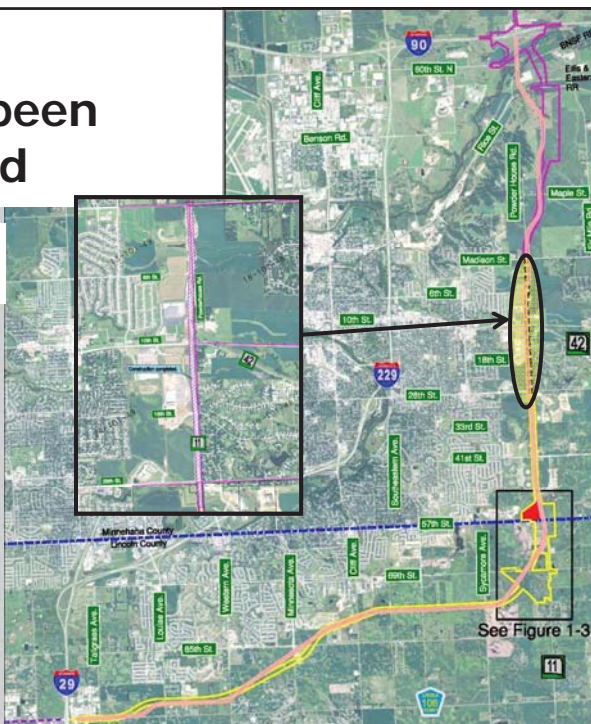
Where We've Been

- 1993-East Side Corridor
- 2003-Signed EA
- 2005-Supplement to EA
- 2005-Corridor Preservation
- 2006-Revised Alignment
- 2007- Public Meeting
- 2008- Access and Noise Plan



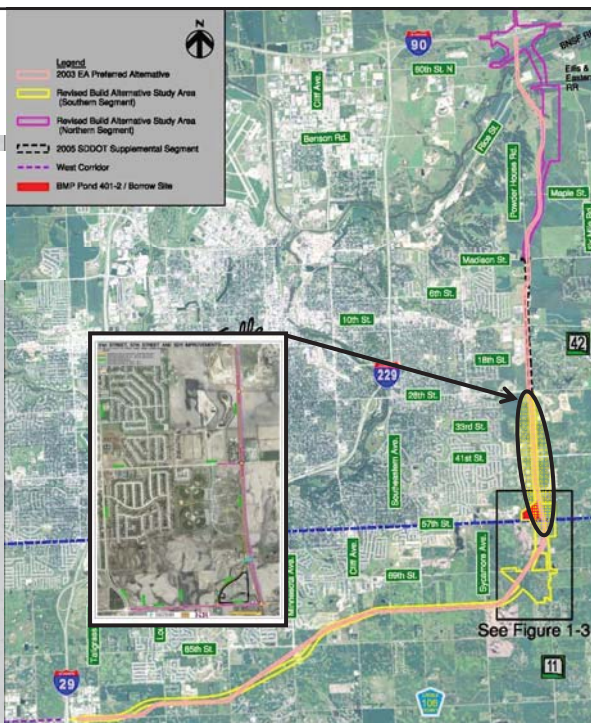
SD100 – What Has been Constructed

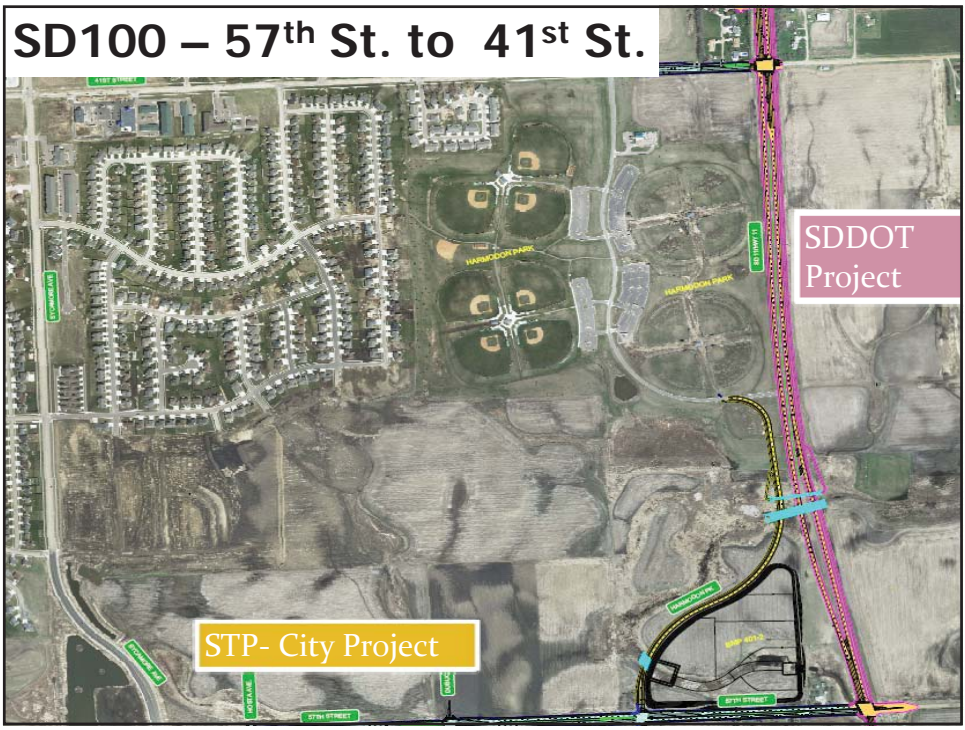
- Madison Street through 26th Street



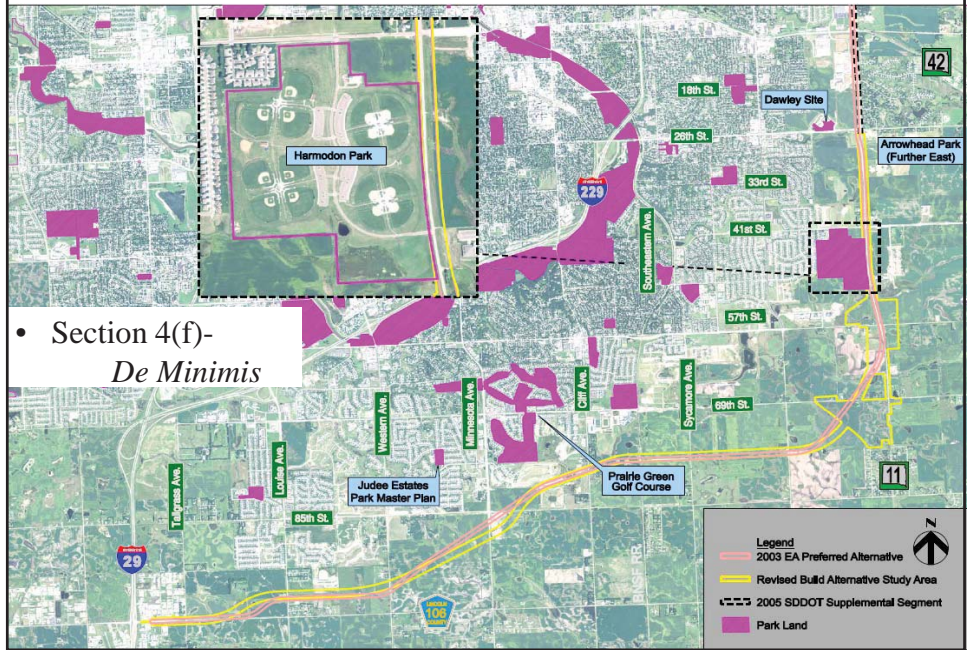
SD100 – What is Next

- 26th Street through 57th Street
- SD11 Improvements



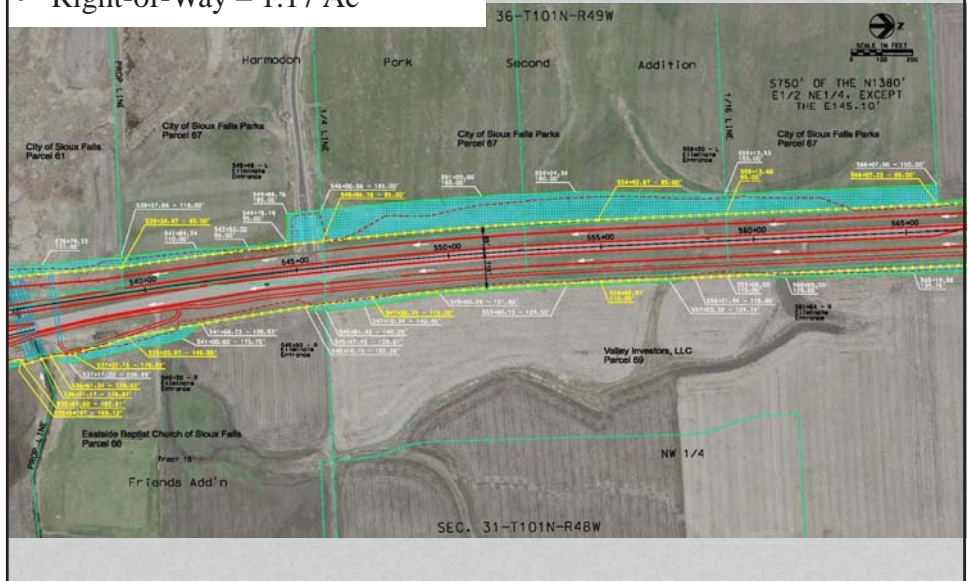


SD100 – Harmodon Park



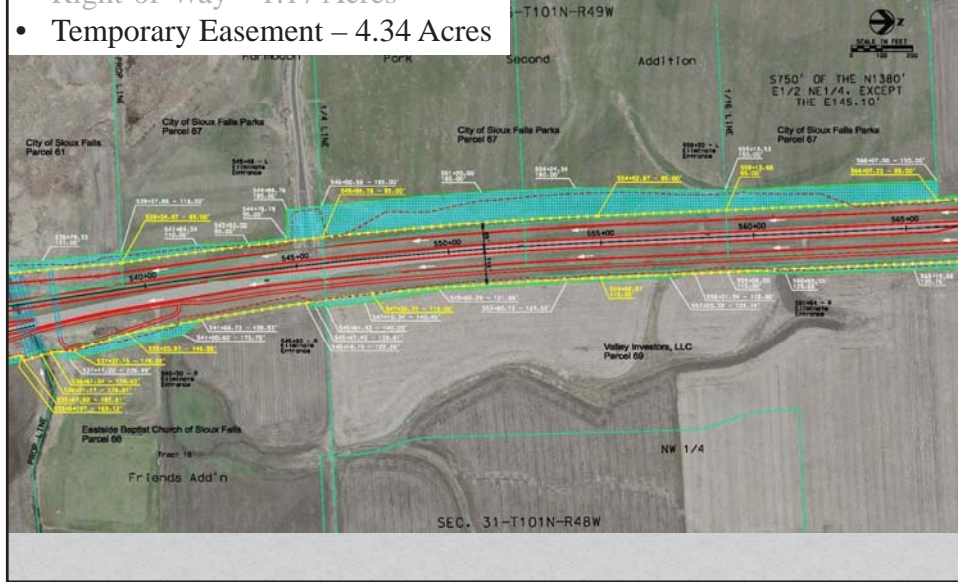
SD100 – Harmodon Park Impacts

- Right-of-Way – 1.17 Ac



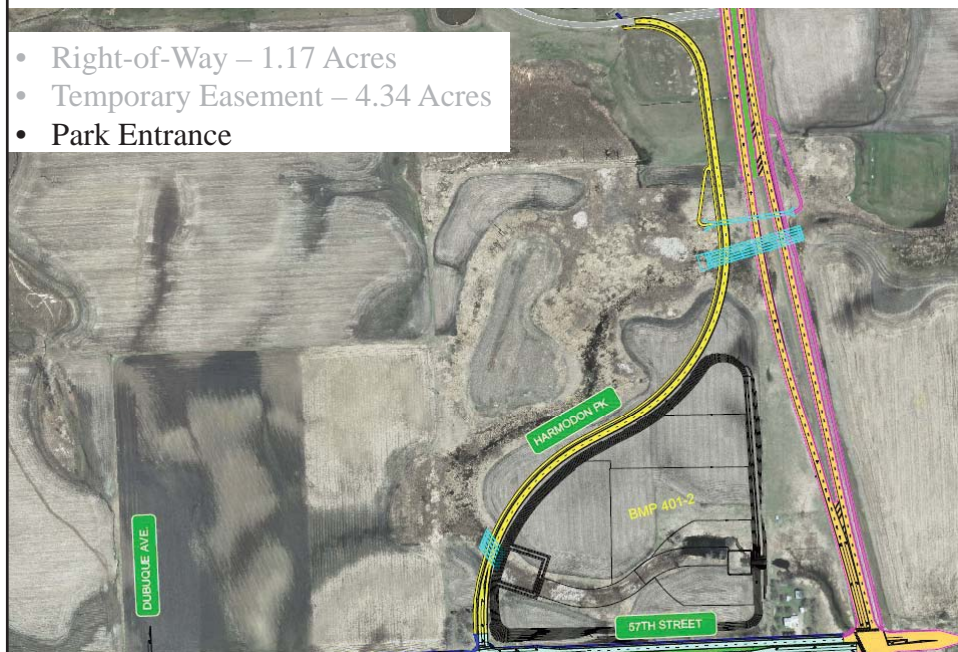
SD100 – Harmodon Park Impacts

- Right-of-Way – 1.17 Acres
- Temporary Easement – 4.34 Acres

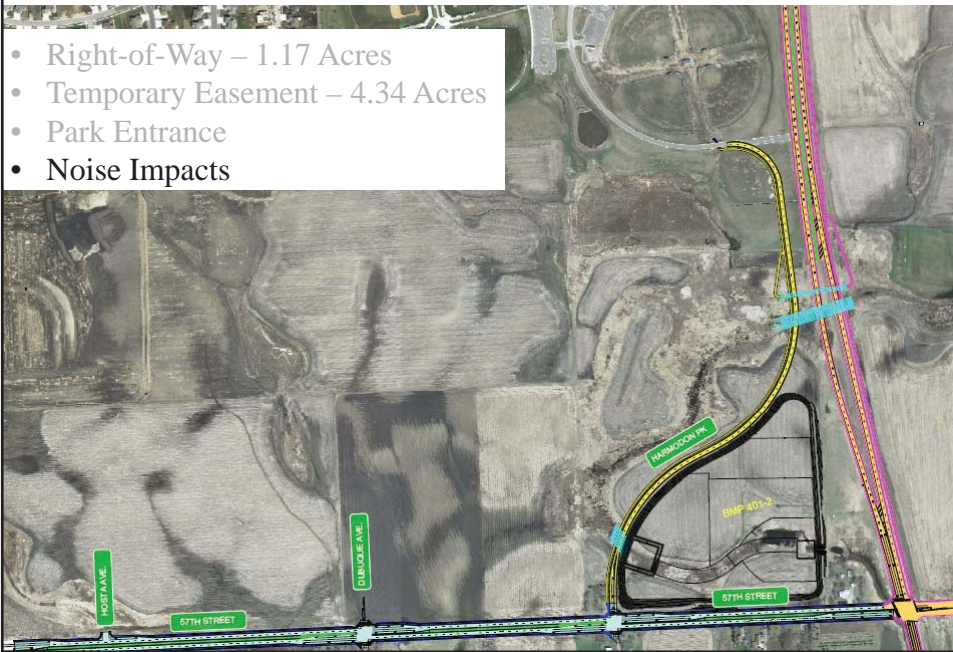


SD100 – Harmodon Park Impacts

- Right-of-Way – 1.17 Acres
- Temporary Easement – 4.34 Acres
- Park Entrance



SD100 – Harmodon Park Impacts



SD100 – Status of the Project

- FHWA Approval of Document for Public Availability
- 30 Day Public Comment Period
- Dec- FHWA Signs EA
- Feb 2012- Bid Letting
- April thru July 2012- Phase 1 Construction
- July thru Nov 2012- Phase 2 Construction
- June 30, 2013- Final Restoration

