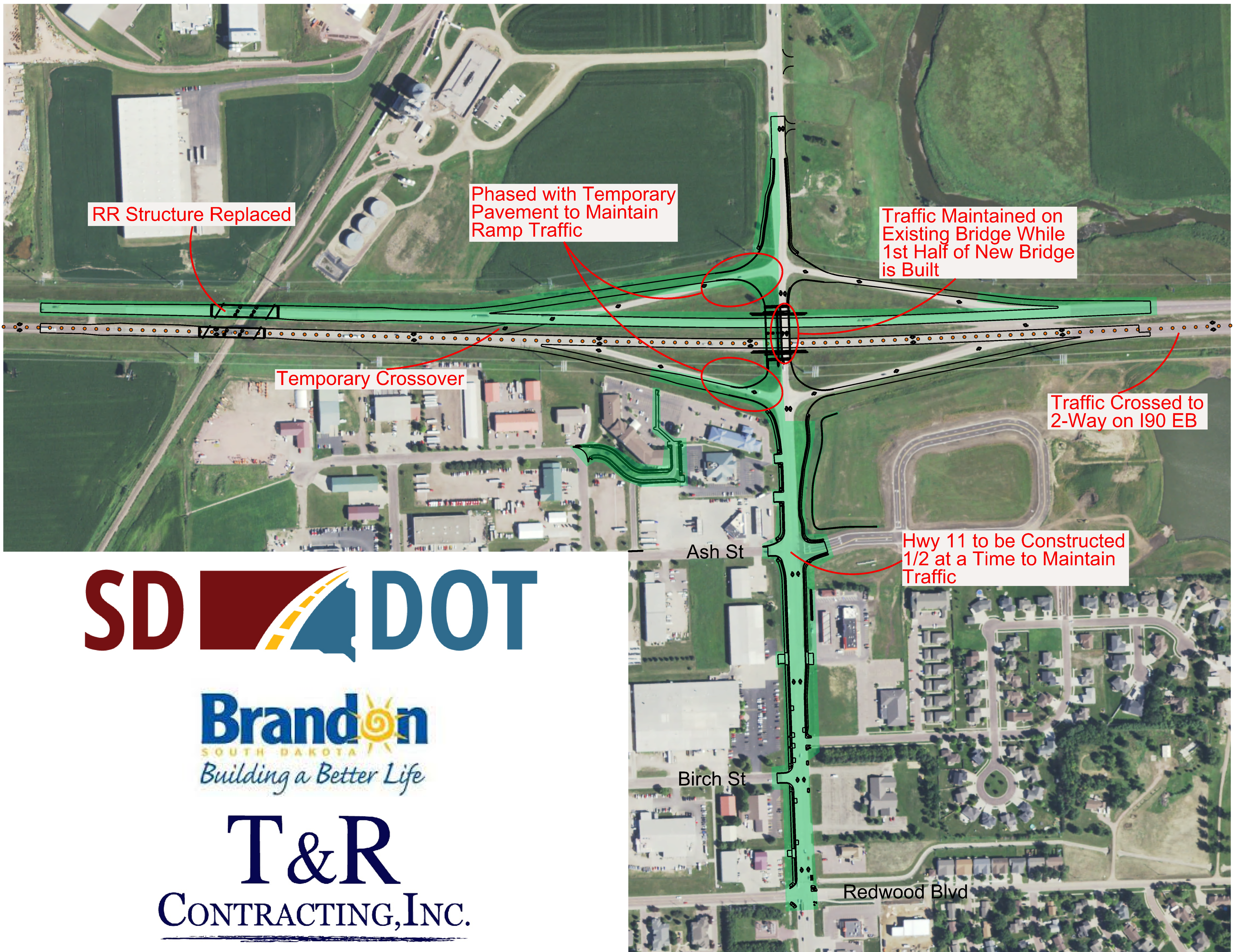


Construction Phasing

Year 1



INTERSTATE 90

Exit 406 (Brandon)

Diverging Diamond Interchange



Includes:

- Westbound I90 Lanes
- Westbound RR Bridge
- Westbound On Ramp & Portion of Eastbound Off Ramp
- SD Hwy 11 in Brandon
- 1st Half of New Bridge Over I90
- West Half of SD Hwy 11 North of Interchange
- Realignment of Express Ave