



Northshore Bypass Environmental Assessment and Section 4(f) Evaluation

PUBLIC MEETING OPEN HOUSE – APRIL 15, 2025

North Sioux City Community Center, 5:30 - 7p.m.

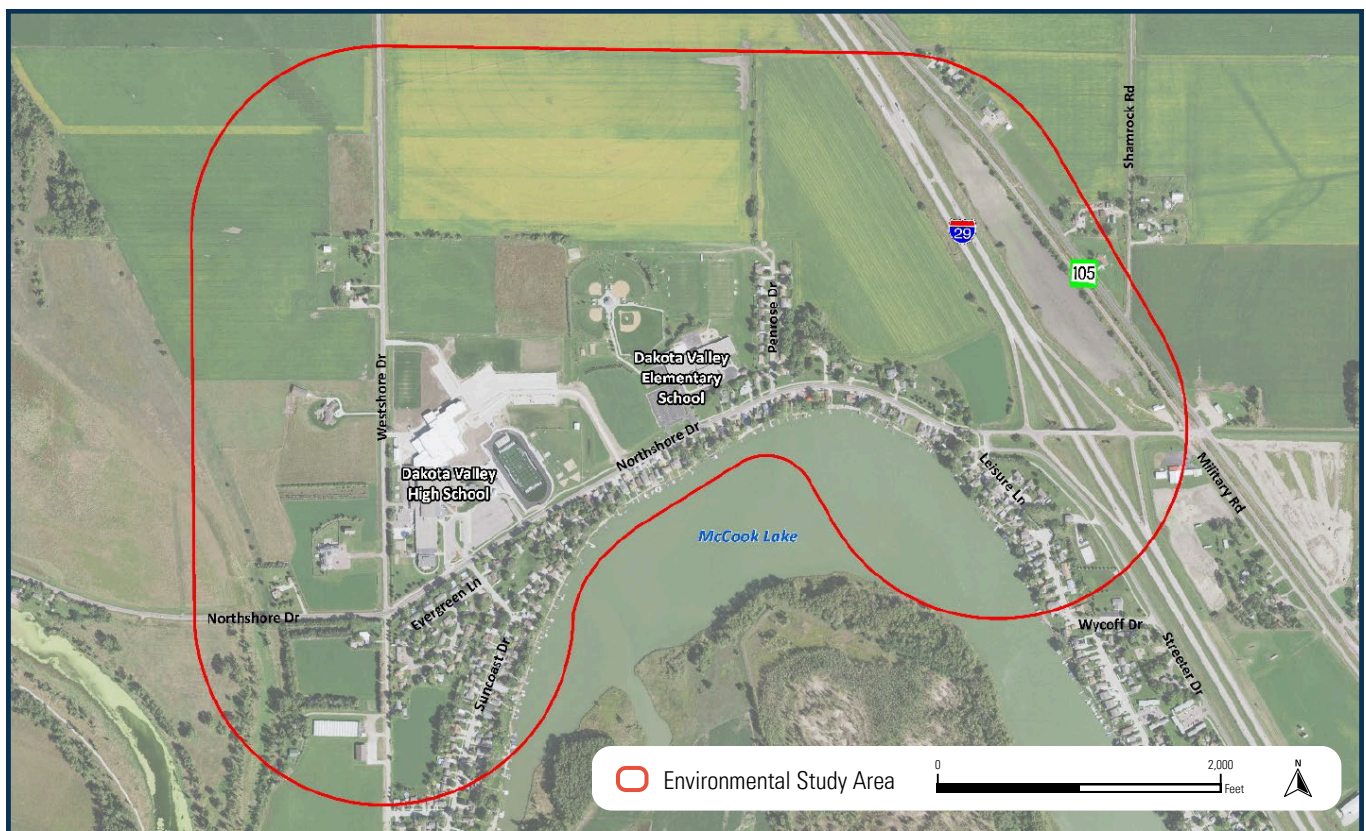
Project Information and Meeting Objectives

Welcome to the public meeting open house of the Northshore Bypass Environmental Assessment and Section 4(f) Evaluation. This project is proposing improvements to traffic operations along Northshore Drive including the potential for a new route.

As part of this multi-year project the Environmental Assessment (EA) is a comprehensive review of resources and impacts that may occur as part of the Northshore Bypass. Due to the presence of recreational and historic resources, an additional "Section 4(f)" evaluation is necessary. Now is the formal opportunity for public comments on the project.

The EA and Section 4(f) evaluation along with all accompanying appendices can be found online at <https://dot.sd.gov/doing-business/environmental/environmental-assessments/#northshore>.

The public comment period is open from April 3, 2025 through May 2, 2025. Comments will be reviewed and addressed as part of the determination of significance to be complete during the spring of 2025. Assuming a "finding of no significant impact" determination is made, the first signs of construction may be visible in spring of 2026. Major construction elements are expected to start in summer of 2026.

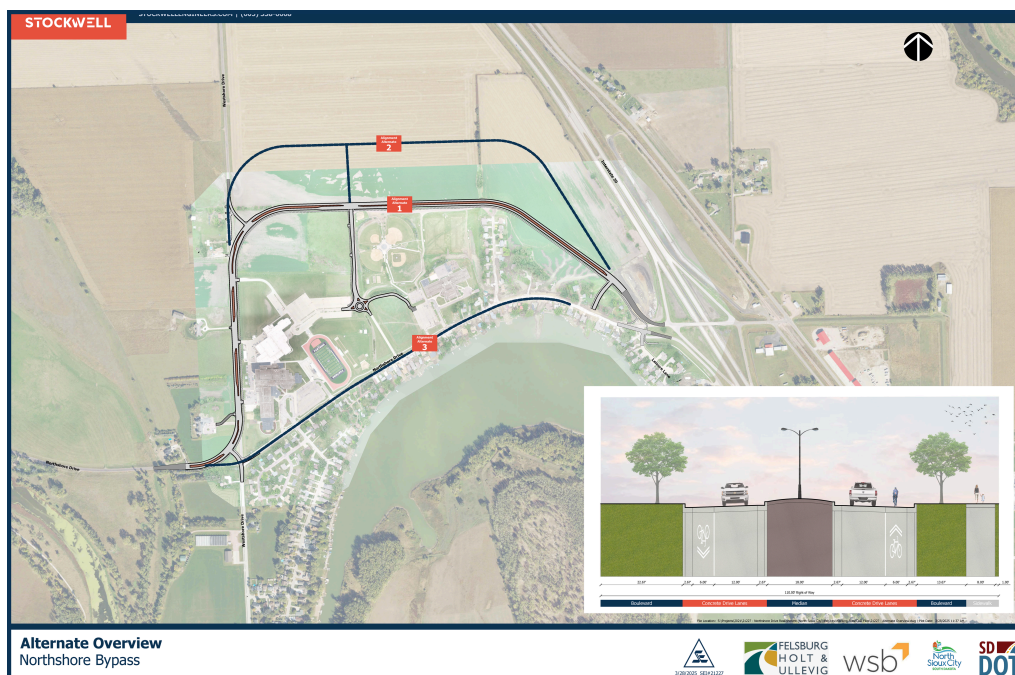


Northshore Bypass Environmental Assessment and Section 4(f) Evaluation

COMMENT PERIOD: APRIL 3, 2025 THROUGH MAY 2, 2025

Selection of Preferred Alternative

Three Alternatives were evaluated with the Environmental Assessment & Section 4(f) Evaluation: Build Alternative 1, Build Alternative 2, and the No Build Alternative. Build Alternative 1 was selected as the Preferred Alternative as it accomplishes the ability to meet the purpose and need, address the project goals, while fulfilling its statutory responsibilities, giving consideration to economic, environmental, technical, and other factors.



Advantages of Build Alternative 1

- Meets goal of providing a faster travel route than using the existing Northshore Drive to travel between Dakota Valley High School and the Northshore Drive/Streeter Drive intersection.
- Shortest distance and fastest travel route between the Northshore Drive/Streeter Drive intersection and Westshore Drive, resulting in less travel delay.
- Requires less ROW acquisition than Build Alternative 2.
- Lower construction costs than Build Alternative 2.
- Less conversion of farmland to non-farmland land uses and would not bisect the existing agricultural field.
- Would have lower wetland impacts than Build Alternative 2.
- Previous public involvement opportunities have shown public support of Build Alternative 1.

Advantages of Build Alternative 2

- Would require less ROW acquisition from the Dakota Valley Schools recreational areas than Build Alternative 1.

Contact Information:

Paula Huizenga
Project Manager
P: 605-773-6253 | E: paula.huizenga@state.sd.us

Visit the project website
to learn more!

<https://dot.sd.gov/doing-business/environmental/environmental-assessments/#northshore>

