



# Automatic Traffic Recorder Data



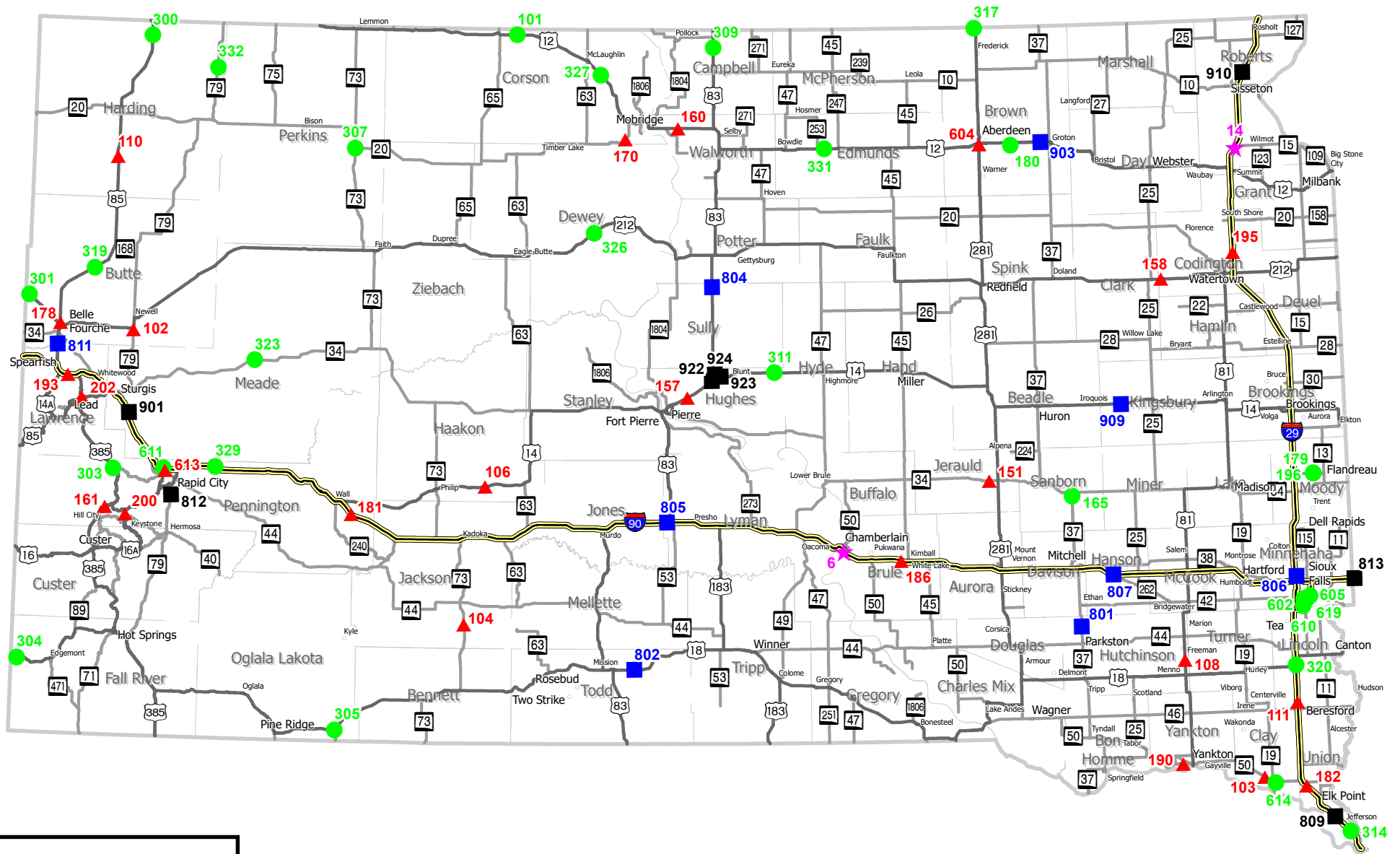
Prepared by:  
Division of Planning and Engineering  
Inventory Management & Research  
700 East Broadway Avenue  
Pierre, South Dakota 57501  
(605) 773-3278

*Photo by South Dakota Tourism*

*The South Dakota Department of Transportation provides services without regard to race, color, gender, religion, national origin, age or disability, according to the provisions contained in SDCL 20-13, Title VI of the Civil Rights Act of 1964, the Rehabilitation Act of 1973, as amended, the Americans With Disabilities Act of 1990 and Executive Order 12898, Federal Actions to Address Environmental Justice in Minority Populations and Low-Income Populations, 1994. To request additional information on the DOT's Title VI/Nondiscrimination policy or to file a discrimination complaint, please contact the Department's Civil Rights Office at 605-773-3540*

*May 2025*





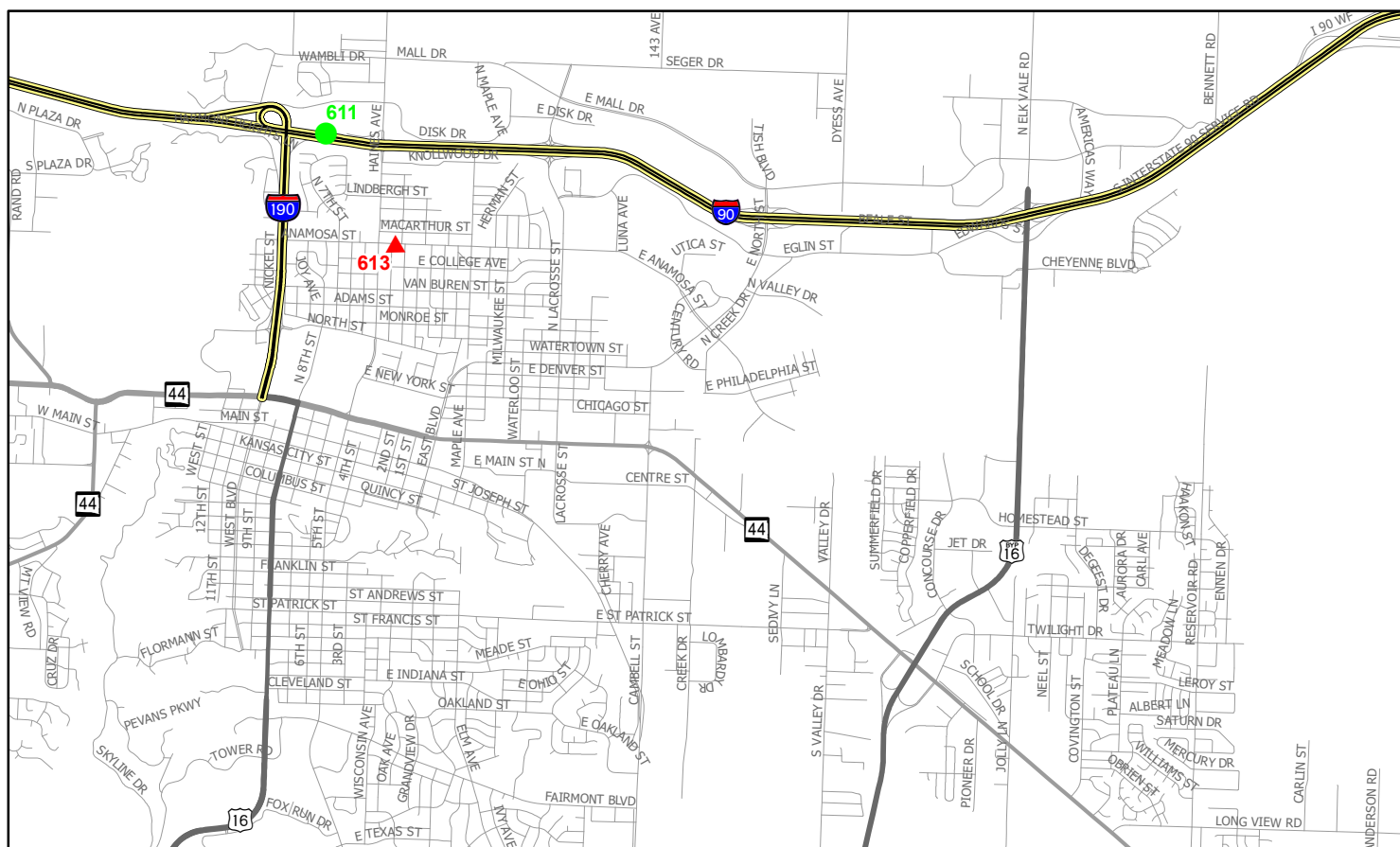
### Legend

- ▲ Automatic Vehicle Classification
- Volume (incl. RWIS)
- ★ Rest Area Volume
- Weigh-In-Motion
- Weigh-In-Motion Port of Entry

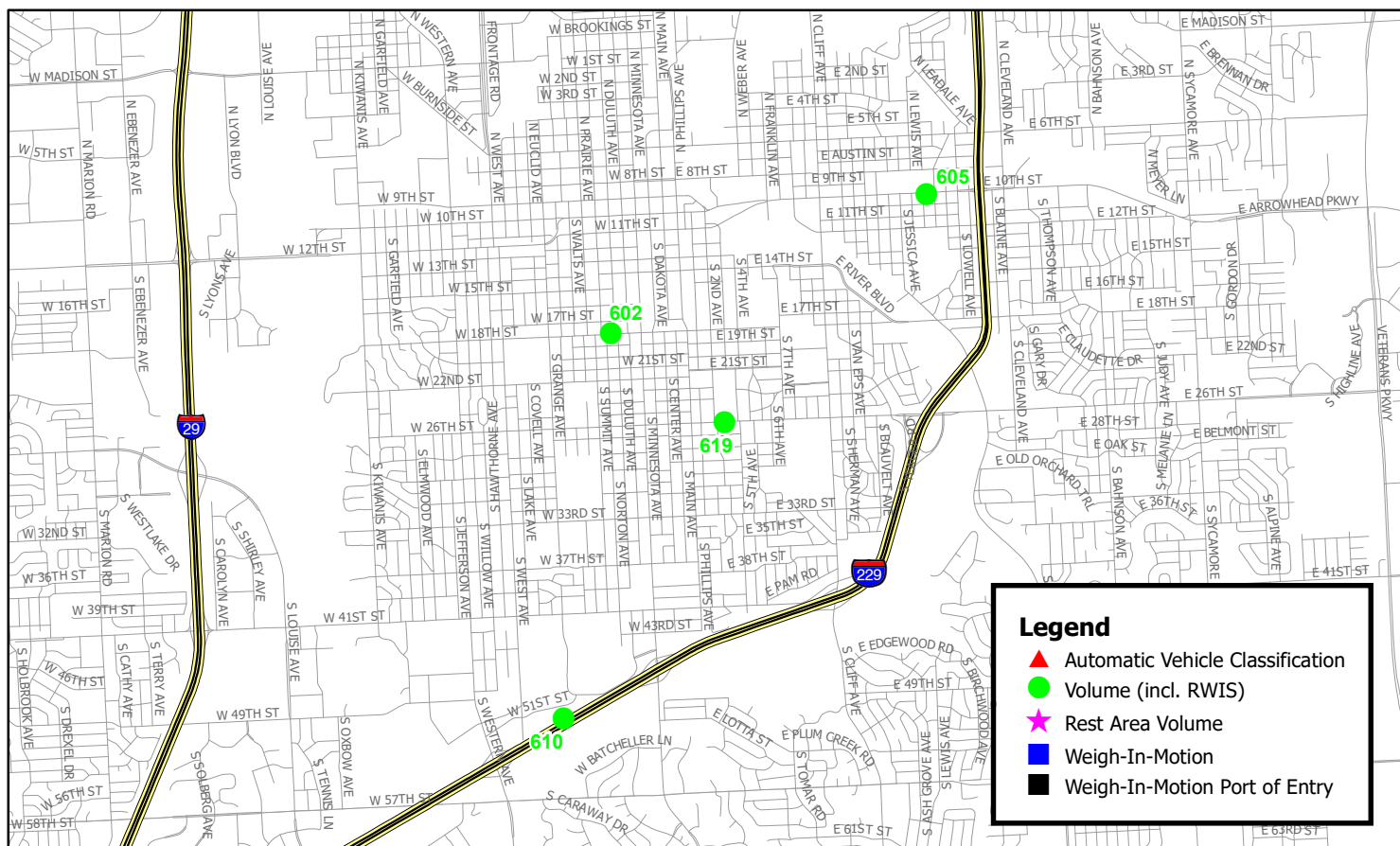
## SOUTH DAKOTA

### Permanent Sites

# Rapid City



# Sioux Falls



## Legend

- ▲ Automatic Vehicle Classification
- Volume (incl. RWIS)
- ★ Rest Area Volume
- Weigh-In-Motion
- Weigh-In-Motion Port of Entry

**Automatic Traffic Recorder Data**  
**Volume Comparision For Each Month of 2024 And 2025**

**ATR Sites: 100, 200, 600 series. Rest Areas: 002-014 series. Weigh In Motion Sites: 800, 900 series. ESS Sites: 300 series.**

Station	Direction	Year	Jan	Feb	Mar	Apr	May	Jun	Jul	Aug	Sep	Oct	Nov	Dec	Annual
Rural Major Collector															
180 NORTH															
FAS6251 SOUTH OF BATH			BROWN												
	# of Days Monitored		30	28	30	29	31								
	2025		246	254	282	289	310								276
	# of Days Monitored		29	28	27	29	28	27	31	28	30	31	25	31	
	2024		232	245	249	270	307	305	302	311	299	388	296	254	288
	% CHG. MO.		6.03%	3.67%	13.25%	7.04%	0.98%								
	% CHG. YR.			4.82%	8.50%	10.02%	3.81%								
180 SOUTH															
FAS6251 SOUTH OF BATH			BROWN												
	# of Days Monitored		30	28	30	29	31								
	2025		227	233	255	265	292								254
	# of Days Monitored		29	28	27	29	28	27	31	28	30	31	25	31	
	2024		215	213	227	247	281	281	279	278	276	364	276	232	264
	% CHG. MO.		5.58%	9.39%	12.33%	7.29%	3.91%								
	% CHG. YR.			7.48%	10.91%	9.70%	5.49%								
190 EAST															
SD52 WEST OF YANKTON			YANKTON												
	# of Days Monitored		31	28	28	30	29								
	2025		2,347	2,424	2,782	3,167	3,969								2,938
	# of Days Monitored		23	29	27	28	28	26	18	30	27	31	28	31	
	2024		2,211	2,548	2,745	3,196	4,218	4,476	4,400	4,101	3,644	3,387	2,626	2,430	3,332
	% CHG. MO.		6.15%	-4.87%	1.35%	-0.91%	-5.90%								
	% CHG. YR.			0.25%	-1.64%	0.13%	-3.75%								

06/12/2025 Page 1 of 36  
HR09MonthlyVolumeComparison.xls

NOTE: The statistics provided throughout this report are a general overview of the monthly traffic trends from approximately 75 permanent traffic monitoring locations throughout the state. For South Dakota's official travel trend, please refer to the annual vehicle miles travel report, which includes data from the permanent traffic monitoring locations in addition to approximately 7,000 short-term count locations.

Station Direction Year	Jan	Feb	Mar	Apr	May	Jun	Jul	Aug	Sep	Oct	Nov	Dec	Annual
190 WEST													
SD52 WEST OF YANKTON	YANKTON												
# of Days Monitored	31	28	28	30	29								
2025	2,396	2,464	2,842	3,238	4,044								2,997
# of Days Monitored	23	29	27	28	28	26	18	30	27	31	28	31	
2024	2,245	2,588	2,787	3,271	4,281	4,562	4,441	4,151	3,666	3,415	2,667	2,472	3,379
% CHG. MO.	6.73%	-4.79%	1.97%	-1.01%	-5.54%								
% CHG. YR.		0.56%	-1.28%	0.36%	-3.58%								
196 NORTH													
FAS6337 WEST OF FLANDREAU	MOODY												
# of Days Monitored	27	20		26	31								
2025	108	105	*	125	145								121
# of Days Monitored	20	20	23	30	29	26	30	27	17	31	29	30	
2024	100	105	112	127	142	143	138	133	144	144	129	116	128
% CHG. MO.	8%	0%		-1.57%	2.11%								
% CHG. YR.		3.90%			0.37%								
196 SOUTH													
FAS6337 WEST OF FLANDREAU	MOODY												
# of Days Monitored	27	20		26	31								
2025	116	109	*	133	156								128
# of Days Monitored	20	20	23	30	29	26	30	27	17	31	29	30	
2024	107	109	129	140	151	153	148	144	155	158	137	125	138
% CHG. MO.	8.41%	0%		-5%	3.31%								
% CHG. YR.		4.17%			-0.69%								
Rural Minor Arterial													
151 EAST													
SD34 EAST OF WESSINGTON SPRINGS	JERAULD												
# of Days Monitored	30	28	29	30	31								
2025	477	501	540	602	675								559
# of Days Monitored	28	29	28	29	31	30	30	31	29	31	27	31	
2024	468	504	506	578	669	656	678	681	687	715	608	503	604
% CHG. MO.	1.92%	-0.60%	6.72%	4.15%	0.90%								
% CHG. YR.		0.62%	3.07%	5.35%	2.41%								

NOTE: The statistics provided throughout this report are a general overview of the monthly traffic trends from approximately 75 permanent traffic monitoring locations throughout the state. For South Dakota's official travel trend, please refer to the annual vehicle miles travel report, which includes data from the permanent traffic monitoring locations in addition to approximately 7,000 short-term count locations.

Station	Direction	Year	Jan	Feb	Mar	Apr	May	Jun	Jul	Aug	Sep	Oct	Nov	Dec	Annual
151 WEST															
SD34 EAST OF WESSINGTON SPRINGS								JERAULD							
# of Days Monitored			30	28	29	30	31								
2025			481	510	553	607	678								566
# of Days Monitored			28	29	28	29	31	30	30	31	29	31	27	31	
2024			471	511	511	586	686	674	692	690	706	721	612	511	614
% CHG. MO.			2.12%	-0.20%	8.22%	3.58%	-1.17%								
% CHG. YR.				0.92%	4.01%	5.74%	1.02%								
170 EAST															
SD20 WEST OF MOBRIDGE								CORSON							
# of Days Monitored			30	28	30	29	31								
2025			264	272	314	349	392								318
# of Days Monitored			25	25	25	29	31	30	31	25	24	31	27	31	
2024			268	299	303	337	387	407	405	384	385	386	366	308	353
% CHG. MO.			-1.49%	-9.03%	3.63%	3.56%	1.29%								
% CHG. YR.				-5.47%	-2.66%	3.59%	2.35%								
170 WEST															
SD20 WEST OF MOBRIDGE								CORSON							
# of Days Monitored			30	28	30	29	31								
2025			268	271	316	350	385								318
# of Days Monitored			25	25	25	29	31	30	31	25	24	31	27	31	
2024			266	297	296	337	384	408	412	392	394	399	369	314	356
% CHG. MO.			0.75%	-8.75%	6.76%	3.86%	0.26%								
% CHG. YR.				-4.26%	-1.01%	5.21%	1.94%								
179 EAST															
SD32 WEST OF FLANDREAU								MOODY							
# of Days Monitored			30	28	25	30	31								
2025			919	968	1,039	1,145	1,151								1,044
# of Days Monitored			12	23	25	29	31	30	30	30	30	31	26	31	
2024			776	958	963	1,036	1,071	1,091	1,066	1,069	1,130	1,101	1,026	905	1,016
% CHG. MO.			18.43%	1.04%	7.89%	10.52%	7.47%								
% CHG. YR.				8.82%	4.48%	9.25%	8.97%								

NOTE: The statistics provided throughout this report are a general overview of the monthly traffic trends from approximately 75 permanent traffic monitoring locations throughout the state. For South Dakota's official travel trend, please refer to the annual vehicle miles travel report, which includes data from the permanent traffic monitoring locations in addition to approximately 7,000 short-term count locations.

Station Direction Year	Jan	Feb	Mar	Apr	May	Jun	Jul	Aug	Sep	Oct	Nov	Dec	Annual
179 WEST													
SD32 WEST OF FLANDREAU													
MOODY													
# of Days Monitored	30	28	25	30	31								
2025	959	1,008	1,085	1,185	1,188								1,085
# of Days Monitored	12	23	25	29	31	30	30	30	30	31	26	31	
2024	820	1,001	1,012	1,089	1,123	1,145	1,112	1,120	1,181	1,151	1,065	940	1,063
% CHG. MO.	16.95%	0.70%	7.21%	8.82%	5.79%								
% CHG. YR.		8.02%	3.97%	8.04%	7.28%								
200 EAST													
US16A NORTH OF KEYSTONE													
PENNINGTON													
# of Days Monitored	29	28	29	30	30								
2025	425	476	756	987	1,910								911
# of Days Monitored	29	29	30	30	30	27	28	29	29	29	26	31	
2024	513	607	811	1,017	2,408	3,447	3,955	3,689	2,478	1,489	694	538	1,804
% CHG. MO.	-17.15%	-21.58%	-6.78%	-2.95%	-20.68%								
% CHG. YR.		-19.55%	-13.12%	-4.65%	-15.42%								
200 WEST													
US16A NORTH OF KEYSTONE													
PENNINGTON													
# of Days Monitored	29	28	29	30	29								
2025	448	506	827	1,075	2,097								991
# of Days Monitored	29	29	30	30	30	27	28	29	29	29	25	31	
2024	508	606	897	1,134	2,523	3,756	4,288	4,089	2,731	1,640	726	577	1,956
% CHG. MO.	-11.81%	-16.50%	-7.80%	-5.20%	-16.88%								
% CHG. YR.		-14.36%	-11.31%	-6.35%	-13.26%								
303 EAST													
SD44 EAST OF SILVER CITY													
PENNINGTON													
# of Days Monitored	31	21	31	30	31								
2025	436	344	438	503	757								496
# of Days Monitored	30	29	30	28	20	30	31	31	30	18	22	21	
2024	400	434	402	454	610	1,231	1,335	1,083	913	502	426	390	682
% CHG. MO.	9%	-20.74%	8.96%	10.79%	24.10%								
% CHG. YR.		-6.47%	-6.46%	9.93%	18.42%								

NOTE: The statistics provided throughout this report are a general overview of the monthly traffic trends from approximately 75 permanent traffic monitoring locations throughout the state. For South Dakota's official travel trend, please refer to the annual vehicle miles travel report, which includes data from the permanent traffic monitoring locations in addition to approximately 7,000 short-term count locations.







Station	Direction	Year	Jan	Feb	Mar	Apr	May	Jun	Jul	Aug	Sep	Oct	Nov	Dec	Annual
111 NORTH															
I29 NORTH OF BERESFORD			LINCOLN												
	# of Days Monitored		31	28	26	26	31								
	2025		7,889	8,156	9,058	10,087	11,000								9,238
	# of Days Monitored		28	29	29	29	20	27	28	27	30	27	26	31	
	2024		7,338	8,202	8,698	9,384	10,306	10,475	10,848	10,663	10,481	10,531	9,522	8,676	9,594
	% CHG. MO.		7.51%	-0.56%	4.14%	7.49%	6.73%								
	% CHG. YR.			3.25%	1.86%	5.88%	7.09%								
111 SOUTH															
I29 NORTH OF BERESFORD			LINCOLN												
	# of Days Monitored		31	28	26	26	31								
	2025		8,023	8,188	8,879	9,801	10,592								9,097
	# of Days Monitored		28	29	29	29	20	27	28	27	30	27	26	31	
	2024		7,477	8,248	8,631	9,144	9,922	10,341	10,805	10,902	10,542	10,655	9,722	8,759	9,596
	% CHG. MO.		7.30%	-0.73%	2.87%	7.19%	6.75%								
	% CHG. YR.			3.09%	1.11%	5.09%	6.96%								
181 EAST															
I90 SOUTHEAST OF WALL			PENNINGTON												
	# of Days Monitored		31	27	28	28	31								
	2025		2,006	2,254	2,745	2,910	3,736								2,730
	# of Days Monitored		31	20	27	26	31	25	26	29	24	31	25	30	
	2024		2,126	2,247	2,760	2,765	3,868	4,994	5,506	5,649	4,730	3,940	2,921	2,575	3,673
	% CHG. MO.		-5.64%	0.31%	-0.54%	5.24%	-3.41%								
	% CHG. YR.			-2.58%	-0.16%	2.35%	0.20%								
181 WEST															
I90 SOUTHEAST OF WALL			PENNINGTON												
	# of Days Monitored		31	27	28	28	31								
	2025		2,041	2,263	2,668	2,913	3,928								2,763
	# of Days Monitored		31	20	27	26	31	25	26	29	24	31	25	30	
	2024		2,141	2,218	2,727	2,789	4,102	5,056	5,438	5,341	4,451	3,733	2,834	2,595	3,619
	% CHG. MO.		-4.67%	2.03%	-2.16%	4.45%	-4.24%								
	% CHG. YR.			-1.26%	-0.28%	1.18%	-0.73%								

NOTE: The statistics provided throughout this report are a general overview of the monthly traffic trends from approximately 75 permanent traffic monitoring locations throughout the state. For South Dakota's official travel trend, please refer to the annual vehicle miles travel report, which includes data from the permanent traffic monitoring locations in addition to approximately 7,000 short-term count locations.

Station Direction Year	Jan	Feb	Mar	Apr	May	Jun	Jul	Aug	Sep	Oct	Nov	Dec	Annual
182 NORTH													
I29 SOUTH OF JUNCTION CITY						UNION							
# of Days Monitored	28	24	25	27	27								
2025	5,585	5,849	6,435	7,211	8,070								6,630
# of Days Monitored	27	29	29	28	30	28	28	25	30	31	21	30	
2024	5,506	6,068	6,443	7,040	7,950	8,250	8,365	8,175	7,768	7,643	6,815	6,122	7,179
% CHG. MO.	1.43%	-3.61%	-0.12%	2.43%	1.51%								
% CHG. YR.		-1.21%	-1.81%	1.21%	1.94%								
182 SOUTH													
I29 SOUTH OF JUNCTION CITY						UNION							
# of Days Monitored	28	24	25	27	27								
2025	5,733	6,001	6,429	7,064	7,941								6,634
# of Days Monitored	27	29	29	28	30	28	28	25	30	31	21	30	
2024	5,663	6,207	6,531	6,923	7,690	8,111	8,493	8,388	8,068	7,945	7,187	6,321	7,294
% CHG. MO.	1.24%	-3.32%	-1.56%	2.04%	3.26%								
% CHG. YR.		-1.15%	-2.42%	0.29%	2.68%								
186 EAST													
I90 WEST OF KIMBALL						AURORA							
# of Days Monitored	31	28	30	30	31								
2025	2,693	3,048	3,354	3,728	4,789								3,522
# of Days Monitored	26	29	29	12	31	30	31	31	30	31	29	31	
2024	2,717	2,958	3,339	3,539	4,858	6,066	6,452	6,183	5,405	4,555	3,779	3,179	4,419
% CHG. MO.	-0.88%	3.04%	0.45%	5.34%	-1.42%								
% CHG. YR.		1.16%	1.67%	2.97%	1.43%								
186 WEST													
I90 WEST OF KIMBALL						AURORA							
# of Days Monitored	31	28	30	30	31								
2025	2,738	2,984	3,263	3,705	5,118								3,562
# of Days Monitored	26	29	29	12	31	30	31	31	30	31	29	31	
2024	2,697	2,936	3,252	3,395	5,214	6,510	6,613	6,035	5,231	4,423	3,660	3,205	4,431
% CHG. MO.	1.52%	1.63%	0.34%	9.13%	-1.84%								
% CHG. YR.		1.58%	0.95%	4.83%	2.49%								

NOTE: The statistics provided throughout this report are a general overview of the monthly traffic trends from approximately 75 permanent traffic monitoring locations throughout the state. For South Dakota's official travel trend, please refer to the annual vehicle miles travel report, which includes data from the permanent traffic monitoring locations in addition to approximately 7,000 short-term count locations.



Station	Direction	Year	Jan	Feb	Mar	Apr	May	Jun	Jul	Aug	Sep	Oct	Nov	Dec	Annual
195 NORTH															
I29 NORTH OF WATERTOWN			CODINGTON												
	# of Days Monitored		27	28	29	27	30								
	2025		3,250	3,290	3,681	4,040	4,613								3,775
	# of Days Monitored		29	29	28	24	30	29	29	30	29	30	28	31	
	2024		3,093	3,402	3,574	3,976	4,566	4,709	4,746	4,576	4,362	4,405	3,949	3,521	4,073
	% CHG. MO.		5.08%	-3.29%	2.99%	1.61%	1.03%								
	% CHG. YR.			0.69%	-0.07%	2.26%	1.30%								
195 SOUTH															
I29 NORTH OF WATERTOWN			CODINGTON												
	# of Days Monitored		27	28	29	27	30								
	2025		3,375	3,393	3,639	3,874	4,542								3,765
	# of Days Monitored		29	29	28	24	30	29	29	30	29	30	28	31	
	2024		3,189	3,474	3,544	3,808	4,406	4,692	4,858	4,674	4,511	4,621	4,138	3,673	4,132
	% CHG. MO.		5.83%	-2.33%	2.68%	1.73%	3.09%								
	% CHG. YR.			1.58%	0.20%	2.19%	2.46%								
314 NORTH															
I29 SOUTH OF JEFFERSON			UNION												
	# of Days Monitored		30	25	26	30	25								
	2025		6,479	6,618	7,165	7,762	*								8,761
	# of Days Monitored		29	28	31	29	27	25	29	31	30	31	29	30	
	2024		5,844	7,005	7,350	7,722	8,366	9,089	8,986	9,080	8,751	8,468	7,987	7,141	7,982
	% CHG. MO.		10.87%	-5.52%	-2.52%	0.52%	*								
	% CHG. YR.			1.93%	-3.98%	-0.96%	*								
314 SOUTH															
I29 SOUTH OF JEFFERSON			UNION												
	# of Days Monitored		30	25	26	30	25								
	2025		6,268	6,413	7,164	7,645	10,285								7,555
	# of Days Monitored		29	28	31	29	27	25	29	31	30	31	29	30	
	2024		5,658	6,790	7,141	7,634	8,198	8,615	8,204	8,096	7,862	7,893	7,478	6,835	7,534
	% CHG. MO.		10.78%	-5.55%	0.32%	0.14%	25.46%								
	% CHG. YR.			1.87%	-2.54%	0.23%	13.25%								

NOTE: The statistics provided throughout this report are a general overview of the monthly traffic trends from approximately 75 permanent traffic monitoring locations throughout the state. For South Dakota's official travel trend, please refer to the annual vehicle miles travel report, which includes data from the permanent traffic monitoring locations in addition to approximately 7,000 short-term count locations.

Station Direction Year	Jan	Feb	Mar	Apr	May	Jun	Jul	Aug	Sep	Oct	Nov	Dec	Annual
320 NORTH													
I29 EAST OF DAVIS						LINCOLN							
# of Days Monitored	31	22	18	30	23								
2025	7,750	8,396	9,009	10,057	10,253								9,093
# of Days Monitored	31	29	29	29	31	30	31	31	18	22	30	16	
2024	7,491	8,730	9,066	10,289	10,460	10,881	10,707	10,405	10,811	10,030	9,290	8,553	9,726
% CHG. MO.	3.46%	-3.83%	-0.63%	-2.25%	-1.98%								
% CHG. YR.		-0.46%	-2.20%	-1.49%	-2.12%								
320 SOUTH													
I29 EAST OF DAVIS						LINCOLN							
# of Days Monitored	31	22	18	30	23								
2025	7,848	8,670	9,571	9,727	10,793								9,322
# of Days Monitored	31	29	29	29	31	30	31	31	18	22	30	16	
2024	7,411	8,967	9,346	9,950	10,308	10,953	11,115	10,998	11,222	10,887	9,959	9,032	10,012
% CHG. MO.	5.90%	-3.31%	2.41%	-2.24%	4.71%								
% CHG. YR.		0.85%	-0.39%	0.01%	1.29%								
329 EAST													
I90 WEST OF NEW UNDERWOOD						PENNINGTON							
# of Days Monitored	27	27	29	29	28								
2025	2,959	3,179	3,803	4,098	5,070								3,822
# of Days Monitored	28	29	29		28	28	31	17	15	29	30	28	
2024	3,031	3,383	3,995	*	5,227	6,577	6,953	7,024	6,043	5,145	4,082	3,671	5,012
% CHG. MO.	-2.38%	-6.03%	-4.81%		-3%								
% CHG. YR.		-4.30%	-5.37%										
329 WEST													
I90 WEST OF NEW UNDERWOOD						PENNINGTON							
# of Days Monitored	27	27	29	29	28								
2025	3,066	3,178	3,758	4,099	5,395								3,899
# of Days Monitored	28	29	29		28	28	31	17	15	29	30	28	
2024	3,077	3,358	3,949	*	5,571	6,756	7,163	7,360	5,769	4,961	4,002	3,730	5,063
% CHG. MO.	-0.36%	-5.36%	-4.84%		-3.16%								
% CHG. YR.		-2.97%	-5.08%										

NOTE: The statistics provided throughout this report are a general overview of the monthly traffic trends from approximately 75 permanent traffic monitoring locations throughout the state. For South Dakota's official travel trend, please refer to the annual vehicle miles travel report, which includes data from the permanent traffic monitoring locations in addition to approximately 7,000 short-term count locations.

Station	Direction	Year	Jan	Feb	Mar	Apr	May	Jun	Jul	Aug	Sep	Oct	Nov	Dec	Annual
805 EAST															
190 WEST OF VIVIAN								LYMAN							
# of Days Monitored			31	28	31	29	31								
2025			2,151	2,342	2,871	3,096	3,909								2,874
# of Days Monitored			27	29	30	28	31	30	31	31	30	30	29	30	
2024			2,199	2,400	2,867	2,920	4,036	5,176	5,732	5,706	4,817	4,184	3,127	2,703	3,822
% CHG. MO.			-2.18%	-2.42%	0.14%	6.03%	-3.15%								
% CHG. YR.				-2.30%	-1.03%	3.11%	0.70%								
805 WEST															
190 WEST OF VIVIAN								LYMAN							
# of Days Monitored			31	28	31	29	31								
2025			2,204	2,353	2,821	3,068	4,256								2,940
# of Days Monitored			27	29	30	28	31	30	31	31	30	30	29	30	
2024			2,206	2,364	2,796	2,918	4,379	5,467	5,851	5,512	4,695	4,009	3,048	2,732	3,831
% CHG. MO.			-0.09%	-0.47%	0.89%	5.14%	-2.81%								
% CHG. YR.				-0.28%	0.27%	3.06%	0.37%								
806 NORTH															
129 NORTH OF SIOUX FALLS								MINNEHAHA							
# of Days Monitored			31	28	31	30	31								
2025			9,202	9,424	10,144	10,701	11,355								10,165
# of Days Monitored			27	29	31	30	31	30	30	31	28	29	30	31	
2024			9,089	9,761	9,851	10,837	11,612	11,610	11,742	11,737	11,411	11,637	10,742	9,702	10,811
% CHG. MO.			1.24%	-3.45%	2.97%	-1.25%	-2.21%								
% CHG. YR.				-1.19%	-0.22%	0.76%	-1.75%								
806 SOUTH															
129 NORTH OF SIOUX FALLS								MINNEHAHA							
# of Days Monitored			31	28	31	30	31								
2025			9,263	9,556	10,087	10,568	11,288								10,152
# of Days Monitored			27	29	31	30	31	30	30	31	28	29	30	31	
2024			9,115	9,830	9,835	10,544	11,545	11,634	11,878	11,859	11,656	11,859	11,026	9,946	10,894
% CHG. MO.			1.62%	-2.79%	2.56%	0.23%	-2.23%								
% CHG. YR.				-0.67%	-0.11%	1.35%	-1.05%								

NOTE: The statistics provided throughout this report are a general overview of the monthly traffic trends from approximately 75 permanent traffic monitoring locations throughout the state. For South Dakota's official travel trend, please refer to the annual vehicle miles travel report, which includes data from the permanent traffic monitoring locations in addition to approximately 7,000 short-term count locations.



Station	Direction	Year	Jan	Feb	Mar	Apr	May	Jun	Jul	Aug	Sep	Oct	Nov	Dec	Annual
807 EAST															
190 EAST OF MITCHELL								HANSON							
# of Days Monitored			31	28	31	30	31								
2025			4,727	4,964	5,630	6,437	7,307								5,813
# of Days Monitored			27	29	24	26	31	29	31	30	29	31	30	31	
2024			4,627	5,046	5,530	5,807	7,059	8,114	8,557	8,748	7,664	7,187	6,274	5,499	6,676
% CHG. MO.			2.16%	-1.63%	1.81%	10.85%	3.51%								
% CHG. YR.				0.19%	0.17%	6.44%	6.82%								
807 WEST															
190 EAST OF MITCHELL								HANSON							
# of Days Monitored			31	28	31	30	31								
2025			4,790	4,958	5,609	6,311	7,532								5,840
# of Days Monitored			27	29	24	26	31	29	31	30	29	31	30	31	
2024			4,629	5,035	5,499	5,868	7,409	8,414	8,661	8,589	7,480	7,055	6,171	5,485	6,691
% CHG. MO.			3.48%	-1.53%	2%	7.55%	1.66%								
% CHG. YR.				0.87%	0.31%	4.86%	4.26%								
809 NORTH															
129 SOUTH OF ELK POINT								UNION							
# of Days Monitored			31	28	31	30	31								
2025			6,292	6,594	7,225	8,111	8,893								7,423
# of Days Monitored			25	29	31	29	12	30	31	31	30	17	30	31	
2024			5,980	6,592	7,260	7,898	8,593	9,200	9,122	8,746	8,311	8,421	7,331	6,943	7,866
% CHG. MO.			5.22%	0.03%	-0.48%	2.70%	3.49%								
% CHG. YR.				2.50%	-0.24%	1.17%	3.11%								
809 SOUTH															
129 SOUTH OF ELK POINT								UNION							
# of Days Monitored			31	28	31	30	31								
2025			6,419	6,715	7,159	7,907	8,440								7,328
# of Days Monitored			25	29	31	29	12	30	31	31	30	17	30	31	
2024			6,331	6,942	7,329	7,708	8,317	8,888	9,097	8,860	8,508	7,201	7,627	7,025	7,819
% CHG. MO.			1.39%	-3.27%	-2.32%	2.58%	1.48%								
% CHG. YR.				-1.05%	-2.78%	0.19%	2.01%								

NOTE: The statistics provided throughout this report are a general overview of the monthly traffic trends from approximately 75 permanent traffic monitoring locations throughout the state. For South Dakota's official travel trend, please refer to the annual vehicle miles travel report, which includes data from the permanent traffic monitoring locations in addition to approximately 7,000 short-term count locations.

Station	Direction	Year	Jan	Feb	Mar	Apr	May	Jun	Jul	Aug	Sep	Oct	Nov	Dec	Annual
813 EAST															
190 Valley Springs			MINNEHAHA												
	# of Days Monitored		31	28	31	30	31								
	2025		6,409	6,473	7,156	7,960	8,330								7,266
	# of Days Monitored		29	29	28	29	31	30	31	31	30	31	30	31	
	2024		6,123	6,717	7,156	7,787	8,579	9,409	9,543	9,611	8,569	8,368	7,771	7,170	8,067
	% CHG. MO.		4.67%	-3.63%	0%	2.22%	-2.90%								
	% CHG. YR.			0.33%	-1.76%	1.16%	-0.46%								
813 WEST															
190 Valley Springs			MINNEHAHA												
	# of Days Monitored		31	28	31	30	31								
	2025		6,306	6,312	6,926	7,650	8,293								7,097
	# of Days Monitored		29	29	28	29	31	30	31	31	30	31	30	31	
	2024		6,063	6,537	6,842	7,313	8,339	9,335	9,434	9,411	8,379	8,058	7,438	7,001	7,846
	% CHG. MO.		4.01%	-3.44%	1.23%	4.61%	-0.55%								
	% CHG. YR.			0.14%	-1.05%	2.97%	1.86%								
901 EAST															
190 WEST OF TILFORD			MEADE												
	# of Days Monitored		31	28	31	30	31								
	2025		7,781	8,235	9,125	9,677	11,068								9,177
	# of Days Monitored		29	29	31	30	31	29	31	31	29	31	30	30	
	2024		8,161	8,417	8,896	9,341	10,848	12,570	13,068	14,542	12,034	11,265	9,252	8,816	10,601
	% CHG. MO.		-4.66%	-2.16%	2.57%	3.60%	2.03%								
	% CHG. YR.			-3.39%	0.27%	3.10%	2.75%								
901 WEST															
190 WEST OF TILFORD			MEADE												
	# of Days Monitored		31	28	31	30	31								
	2025		7,715	8,208	9,079	9,650	11,327								9,196
	# of Days Monitored		29	29	31	30	31	29	31	31	29	31	30	30	
	2024		8,097	8,342	8,829	9,381	11,152	12,937	13,458	15,491	11,864	10,997	9,115	8,804	10,706
	% CHG. MO.		-4.72%	-1.61%	2.83%	2.87%	1.57%								
	% CHG. YR.			-3.14%	0.68%	2.85%	2.16%								

NOTE: The statistics provided throughout this report are a general overview of the monthly traffic trends from approximately 75 permanent traffic monitoring locations throughout the state. For South Dakota's official travel trend, please refer to the annual vehicle miles travel report, which includes data from the permanent traffic monitoring locations in addition to approximately 7,000 short-term count locations.

Station Direction Year	Jan	Feb	Mar	Apr	May	Jun	Jul	Aug	Sep	Oct	Nov	Dec	Annual
910 NORTH													
I29 SOUTH OF SISSETON						ROBERTS							
# of Days Monitored	31	25	28	29	31								
2025	1,992	2,090	2,416	2,606	2,875								2,396
# of Days Monitored	30	29	29	30	31	30	31	31	29	31	30	30	
2024	1,956	2,158	2,403	2,624	2,880	3,000	3,068	2,942	2,768	2,728	2,535	2,257	2,610
% CHG. MO.	1.84%	-3.15%	0.54%	-0.69%	-0.17%								
% CHG. YR.		-0.78%	-1.21%	-0.10%	-0.42%								
910 SOUTH													
I29 SOUTH OF SISSETON						ROBERTS							
# of Days Monitored	31	25	28	29	31								
2025	1,983	2,035	2,234	2,379	2,693								2,265
# of Days Monitored	30	29	29	30	31	30	31	31	29	31	30	30	
2024	1,915	2,084	2,235	2,335	2,630	2,846	3,016	2,908	2,713	2,780	2,597	2,272	2,528
% CHG. MO.	3.55%	-2.35%	-0.04%	1.88%	2.40%								
% CHG. YR.		0.48%	-1.16%	0.94%	2.16%								
Rural Principal Arterial Other													
101 EAST													
US12 EAST OF MCINTOSH						CORSON							
# of Days Monitored	30	28	29	30	31								
2025	148	138	166	174	165								158
# of Days Monitored	28	28	28	29	29	28	29	30	30	30	25	31	
2024	143	146	147	182	211	216	194	213	242	234	203	153	190
% CHG. MO.	3.50%	-5.48%	12.93%	-4.40%	-21.80%								
% CHG. YR.		-1.04%	3.75%	3.34%	-13.74%								
101 WEST													
US12 EAST OF MCINTOSH						CORSON							
# of Days Monitored	30	28	29	30	31								
2025	155	144	170	186	176								166
# of Days Monitored	28	28	28	29	29	28	29	30	30	30	25	31	
2024	147	151	152	189	224	226	200	217	275	240	210	155	199
% CHG. MO.	5.44%	-4.64%	11.84%	-1.59%	-21.43%								
% CHG. YR.		0.34%	3.63%	4.40%	-12.35%								

NOTE: The statistics provided throughout this report are a general overview of the monthly traffic trends from approximately 75 permanent traffic monitoring locations throughout the state. For South Dakota's official travel trend, please refer to the annual vehicle miles travel report, which includes data from the permanent traffic monitoring locations in addition to approximately 7,000 short-term count locations.



Station Direction Year	Jan	Feb	Mar	Apr	May	Jun	Jul	Aug	Sep	Oct	Nov	Dec	Annual
102 NORTH													
SD79 SOUTH OF NEWELL						BUTTE							
# of Days Monitored	30	28	25	29	28								
2025	720	777	858	917	1,085								871
# of Days Monitored	30	29	28	29	31	28	26	29	29	31	28	31	
2024	763	788	826	905	1,099	1,246	1,247	1,490	1,171	1,041	944	832	1,029
% CHG. MO.	-5.64%	-1.40%	3.87%	1.33%	-1.27%								
% CHG. YR.		-3.48%	1.30%	2.54%	-0.10%								
102 SOUTH													
SD79 SOUTH OF NEWELL						BUTTE							
# of Days Monitored	30	28	25	29	28								
2025	724	789	858	934	1,083								878
# of Days Monitored	30	29	28	29	31	28	26	29	29	31	28	31	
2024	759	785	844	902	1,094	1,267	1,260	1,429	1,160	1,046	963	855	1,030
% CHG. MO.	-4.61%	0.51%	1.66%	3.55%	-1.01%								
% CHG. YR.		-2.01%	1.10%	2.63%	1.05%								
103 EAST													
SD50 EAST OF GAYVILLE						CLAY							
# of Days Monitored	22	28	30	30	31								
2025	2,380	2,325	2,306	2,591	2,824								2,485
# of Days Monitored	28	26	29	28	29	24	26	27	27	24	26	24	
2024	2,229	2,447	2,388	2,580	2,903	3,149	3,153	3,150	3,017	2,941	2,593	2,403	2,746
% CHG. MO.	6.77%	-4.99%	-3.43%	0.43%	-2.72%								
% CHG. YR.		0.62%	-4.22%	-1.43%	-1.24%								
103 WEST													
SD50 EAST OF GAYVILLE						CLAY							
# of Days Monitored	23	28	30	30	31								
2025	2,386	2,363	2,354	2,638	2,885								2,525
# of Days Monitored	28	26	29	27	29	25	26	28	27	24	26	24	
2024	2,254	2,496	2,413	2,686	2,950	3,226	3,181	3,169	2,982	2,954	2,697	2,457	2,789
% CHG. MO.	5.86%	-5.33%	-2.45%	-1.79%	-2.20%								
% CHG. YR.		-0.02%	-3.91%	-2.10%	-2%								

NOTE: The statistics provided throughout this report are a general overview of the monthly traffic trends from approximately 75 permanent traffic monitoring locations throughout the state. For South Dakota's official travel trend, please refer to the annual vehicle miles travel report, which includes data from the permanent traffic monitoring locations in addition to approximately 7,000 short-term count locations.

Station Direction Year	Jan	Feb	Mar	Apr	May	Jun	Jul	Aug	Sep	Oct	Nov	Dec	Annual
104 NORTH													
SD73 SOUTH OF KADOKA	JACKSON												
# of Days Monitored	31	27	29	30	31								
2025	234	235	253	279	330								266
# of Days Monitored	29	29	29	28	31	30	31	28	30	31	28	30	
2024	232	250	265	277	330	341	362	341	331	328	303	271	303
% CHG. MO.	0.86%	-6%	-4.53%	0.72%	0%								
% CHG. YR.		-2.70%	-5.24%	-1.85%	0.33%								
104 SOUTH													
SD73 SOUTH OF KADOKA	JACKSON												
# of Days Monitored	31	27	29	30	31								
2025	230	228	240	261	309								254
# of Days Monitored	29	29	29	28	31	30	31	28	30	31	28	30	
2024	226	239	245	256	314	322	339	330	341	326	297	269	292
% CHG. MO.	1.77%	-4.60%	-2.04%	1.95%	-1.59%								
% CHG. YR.		-1.51%	-3.31%	0%	0%								
106 EAST													
US14 WEST OF MIDLAND	HAAKON												
# of Days Monitored	31	28	29	30	31								
2025	219	245	290	291	330								275
# of Days Monitored	26	29	26	28	28	27	31	14	30	30	27	31	
2024	265	282	310	309	319	345	466	344	436	353	294	268	333
% CHG. MO.	-17.36%	-13.12%	-6.45%	-5.83%	3.45%								
% CHG. YR.		-15.17%	-9.63%	-6.14%	-1.11%								
106 WEST													
US14 WEST OF MIDLAND	HAAKON												
# of Days Monitored	31	28	29	30	31								
2025	218	250	282	288	314								270
# of Days Monitored	26	29	26	28	28	27	31	14	30	30	27	31	
2024	267	279	305	303	313	333	477	336	427	344	278	267	327
% CHG. MO.	-18.35%	-10.39%	-7.54%	-4.95%	0.32%								
% CHG. YR.		-14.29%	-8.90%	-6.25%	-2.27%								

NOTE: The statistics provided throughout this report are a general overview of the monthly traffic trends from approximately 75 permanent traffic monitoring locations throughout the state. For South Dakota's official travel trend, please refer to the annual vehicle miles travel report, which includes data from the permanent traffic monitoring locations in addition to approximately 7,000 short-term count locations.

Station	Direction	Year	Jan	Feb	Mar	Apr	May	Jun	Jul	Aug	Sep	Oct	Nov	Dec	Annual
108 NORTH															
US81 South of Freeman			HUTCHINSON												
# of Days Monitored			31	28	29	30	31								
2025			716	715	788	845	887								790
# of Days Monitored			29	29	29	29	19	30	29	31	18	31	28	31	
2024			796	926	924	1,009	1,066	1,156	1,021	1,000	928	924	816	750	943
% CHG. MO.			-10.05%	-22.79%	-14.72%	-16.25%	-16.79%								
% CHG. YR.				-16.90%	-18.76%	-15.52%	-16.53%								
108 SOUTH															
US81 South of Freeman			HUTCHINSON												
# of Days Monitored			31	28	29	30	31								
2025			723	711	769	833	885								784
# of Days Monitored			29	29	29	29	19	30	29	31	18	31	28	31	
2024			755	878	881	958	1,032	1,112	1,014	990	925	933	830	747	921
% CHG. MO.			-4.24%	-19.02%	-12.71%	-13.05%	-14.24%								
% CHG. YR.				-12.19%	-15.86%	-12.89%	-13.67%								
110 NORTH															
US85 SOUTH OF BUFFALO			HARDING												
# of Days Monitored			30	28	28	30	27								
2025			441	433	513	541	684								522
# of Days Monitored			30	29	29	29	29	17	28	27	29	29	25	30	
2024			442	447	499	551	611	664	760	775	730	669	539	494	598
% CHG. MO.			-0.23%	-3.13%	2.81%	-1.81%	11.95%								
% CHG. YR.				-1.69%	0%	0.38%	5.42%								
110 SOUTH															
US85 SOUTH OF BUFFALO			HARDING												
# of Days Monitored			30	28	28	30	27								
2025			415	432	473	502	663								497
# of Days Monitored			30	29	29	29	29	17	28	27	29	29	25	30	
2024			416	430	468	488	579	680	760	808	720	686	556	507	592
% CHG. MO.			-0.24%	0.47%	1.07%	2.87%	14.51%								
% CHG. YR.				0.12%	0.78%	1.99%	9.18%								

NOTE: The statistics provided throughout this report are a general overview of the monthly traffic trends from approximately 75 permanent traffic monitoring locations throughout the state. For South Dakota's official travel trend, please refer to the annual vehicle miles travel report, which includes data from the permanent traffic monitoring locations in addition to approximately 7,000 short-term count locations.

Station Direction Year	Jan	Feb	Mar	Apr	May	Jun	Jul	Aug	Sep	Oct	Nov	Dec	Annual
157 EAST													
US14 EAST OF PIERRE						HUGHES							
# of Days Monitored	28	28	29	29	30								
2025	1,244	1,293	1,413	1,548	1,620								1,424
# of Days Monitored	31	29	29	28	31	30	30	19	14	22	29	31	
2024	1,170	1,304	1,335	1,464	1,605	1,719	1,644	1,589	1,503	1,608	1,490	1,266	1,475
% CHG. MO.	6.32%	-0.84%	5.84%	5.74%	0.93%								
% CHG. YR.		2.55%	2.54%	5.79%	3.23%								
157 WEST													
US14 EAST OF PIERRE						HUGHES							
# of Days Monitored	28	28	29	29	30								
2025	1,266	1,277	1,367	1,502	1,595								1,401
# of Days Monitored	31	29	29	28	31	30	30	19	14	22	29	31	
2024	1,175	1,288	1,302	1,413	1,591	1,712	1,663	1,688	1,627	1,691	1,491	1,275	1,493
% CHG. MO.	7.74%	-0.85%	4.99%	6.30%	0.25%								
% CHG. YR.		3.25%	2.08%	5.67%	3.10%								
158 EAST													
US212 WEST OF HENRY						CODINGTON							
# of Days Monitored	31	28	30	30	30								
2025	1,151	1,172	1,131	1,348	1,346								1,230
# of Days Monitored	31	29	29	28	31	30	31	31	16	30	29	31	
2024	1,072	1,141	1,112	1,177	1,373	1,461	1,479	1,500	1,419	1,568	1,409	1,215	1,327
% CHG. MO.	7.37%	2.72%	1.71%	14.53%	-1.97%								
% CHG. YR.		4.97%	2.22%	8.30%	5.65%								
158 WEST													
US212 WEST OF HENRY						CODINGTON							
# of Days Monitored	31	28	30	30	30								
2025	1,142	1,158	1,118	1,322	1,343								1,217
# of Days Monitored	31	29	29	28	31	30	31	31	16	30	29	31	
2024	1,062	1,131	1,111	1,177	1,388	1,466	1,473	1,496	1,414	1,537	1,393	1,208	1,321
% CHG. MO.	7.53%	2.39%	0.63%	12.32%	-3.24%								
% CHG. YR.		4.88%	1.52%	6.64%	3.90%								

NOTE: The statistics provided throughout this report are a general overview of the monthly traffic trends from approximately 75 permanent traffic monitoring locations throughout the state. For South Dakota's official travel trend, please refer to the annual vehicle miles travel report, which includes data from the permanent traffic monitoring locations in addition to approximately 7,000 short-term count locations.

Station	Direction	Year	Jan	Feb	Mar	Apr	May	Jun	Jul	Aug	Sep	Oct	Nov	Dec	Annual
160	EAST														
	US12	WEST OF GLENHAM													
		# of Days Monitored	31	28	30	29	31								
		2025	809	776	884	938	1,041								890
		# of Days Monitored	31	29	27	28	30	30	31	28	27	31	26	31	
		2024	810	847	819	916	1,069	1,161	1,094	1,067	1,058	1,101	957	847	979
		% CHG. MO.	-0.12%	-8.38%	7.94%	2.40%	-2.62%								
		% CHG. YR.		-4.35%	-0.36%	5.01%	-0.30%								
160	WEST														
	US12	WEST OF GLENHAM													
		# of Days Monitored	31	28	30	29	31								
		2025	806	776	885	945	1,061								895
		# of Days Monitored	31	29	27	28	30	30	31	28	27	31	26	31	
		2024	806	846	822	923	1,078	1,172	1,095	1,087	1,067	1,107	962	846	984
		% CHG. MO.	0%	-8.27%	7.66%	2.38%	-1.58%								
		% CHG. YR.		-4.24%	-0.42%	4.87%	0.25%								
161	EAST														
	US16	EAST OF HILL CITY													
		# of Days Monitored	31	28	27	30	29								
		2025	1,804	1,888	2,241	2,556	3,510								2,400
		# of Days Monitored	30	29	29	29	31	29	30	31	29	29	28	31	
		2024	1,903	2,053	2,284	2,606	3,822	4,848	5,123	4,748	4,118	3,123	2,324	2,210	3,264
		% CHG. MO.	-5.20%	-8.04%	-1.88%	-1.92%	-8.16%								
		% CHG. YR.		-6.67%	-4.80%	-1.90%	-5.63%								
161	WEST														
	US16	EAST OF HILL CITY													
		# of Days Monitored	31	28	27	30	29								
		2025	1,778	1,863	2,148	2,458	3,389								2,327
		# of Days Monitored	30	29	29	29	31	29	30	31	29	29	28	31	
		2024	1,876	2,022	2,254	2,577	3,818	4,680	4,961	4,649	3,933	2,978	2,238	2,158	3,179
		% CHG. MO.	-5.22%	-7.86%	-4.70%	-4.62%	-11.24%								
		% CHG. YR.		-6.59%	-6.20%	-4.66%	-8.57%								

NOTE: The statistics provided throughout this report are a general overview of the monthly traffic trends from approximately 75 permanent traffic monitoring locations throughout the state. For South Dakota's official travel trend, please refer to the annual vehicle miles travel report, which includes data from the permanent traffic monitoring locations in addition to approximately 7,000 short-term count locations.

Station	Direction	Year	Jan	Feb	Mar	Apr	May	Jun	Jul	Aug	Sep	Oct	Nov	Dec	Annual
165 NORTH															
SD37 SOUTHEAST OF FORESTBURG								SANBORN							
# of Days Monitored			30	27	21	30	31								
2025			1,116	1,186	1,293	1,326	1,346								1,253
# of Days Monitored			29	29	27	27	30	30	11	31	12	29	23	25	
2024			1,064	1,190	1,220	1,272	1,330	1,329	1,202	1,467	1,319	1,435	1,383	1,247	1,288
% CHG. MO.			4.89%	-0.34%	5.98%	4.25%	1.20%								
% CHG. YR.				2.13%	2.86%	5.10%	2.69%								
165 SOUTH															
SD37 SOUTHEAST OF FORESTBURG								SANBORN							
# of Days Monitored			30	27	21	30	31								
2025			1,119	1,132	1,098	1,308	1,321								1,196
# of Days Monitored			29	29	27	27	30	30	11	31	12	29	23	25	
2024			1,060	1,187	1,207	1,276	1,315	1,309	1,198	1,406	1,302	1,336	1,212	1,235	1,254
% CHG. MO.			5.57%	-4.63%	-9.03%	2.51%	0.46%								
% CHG. YR.				0.18%	-6.85%	-3.10%	1.47%								
178 NORTH															
US85 NORTH OF BELLE FOURCHE								BUTTE							
# of Days Monitored			31	28	29	30	29								
2025			562	554	648	685	803								650
# of Days Monitored			29	28	29	28	24	24	28	29	28	30	27	31	
2024			592	582	644	688	838	909	954	923	884	834	716	633	766
% CHG. MO.			-5.07%	-4.81%	0.62%	-0.44%	-4.18%								
% CHG. YR.				-4.94%	-1.96%	0.08%	-2.49%								
178 SOUTH															
US85 NORTH OF BELLE FOURCHE								BUTTE							
# of Days Monitored			31	28	29	30	29								
2025			556	569	632	658	801								643
# of Days Monitored			29	28	29	28	24	24	28	29	28	30	27	31	
2024			582	585	640	649	821	905	977	985	906	874	744	661	777
% CHG. MO.			-4.47%	-2.74%	-1.25%	1.39%	-2.44%								
% CHG. YR.				-3.60%	-1.96%	0.08%	-0.75%								

NOTE: The statistics provided throughout this report are a general overview of the monthly traffic trends from approximately 75 permanent traffic monitoring locations throughout the state. For South Dakota's official travel trend, please refer to the annual vehicle miles travel report, which includes data from the permanent traffic monitoring locations in addition to approximately 7,000 short-term count locations.



Station	Direction	Year	Jan	Feb	Mar	Apr	May	Jun	Jul	Aug	Sep	Oct	Nov	Dec	Annual
202 EAST															
US14A EAST OF US85 DEADWOOD								LAWRENCE							
	# of Days Monitored		31	28	27	30	30								
	2025		2,218	2,294	2,494	2,520	3,199								2,545
	# of Days Monitored		30	29	29	28	30	28	29	28	30	31	27	31	
	2024		2,302	2,395	2,490	2,465	3,213	4,290	4,711	5,843	3,820	3,232	2,362	2,340	3,289
	% CHG. MO.		-3.65%	-4.22%	0.16%	2.23%	-0.44%								
	% CHG. YR.			-3.94%	-1.99%	1.19%	0.72%								
202 WEST															
US14A EAST OF US85 DEADWOOD								LAWRENCE							
	# of Days Monitored		31	28	27	30	30								
	2025		2,151	2,278	2,475	2,485	3,192								2,516
	# of Days Monitored		30	29	29	28	30	28	29	28	30	31	27	31	
	2024		2,229	2,364	2,468	2,415	3,167	4,294	4,635	5,946	3,638	3,068	2,327	2,352	3,242
	% CHG. MO.		-3.50%	-3.64%	0.28%	2.90%	0.79%								
	% CHG. YR.			-3.57%	-1.63%	1.58%	1.70%								
300 NORTH															
US85 NORTH OF LUDLOW								HARDING							
	# of Days Monitored		31	28	31	30	31								
	2025		372	381	424	458	593								446
	# of Days Monitored		31	28	31	28	29	26	31	31	30	31	30	31	
	2024		369	381	431	502	575	666	675	686	616	597	470	438	534
	% CHG. MO.		0.81%	0%	-1.62%	-8.76%	3.13%								
	% CHG. YR.			0.40%	-0.86%	-5.47%	-2.41%								
300 SOUTH															
US85 NORTH OF LUDLOW								HARDING							
	# of Days Monitored		31	28	31	30	31								
	2025		386	376	444	484	608								460
	# of Days Monitored		31	28	31	28	29	26	31	31	30	31	30	31	
	2024		400	395	453	565	590	709	669	655	602	581	453	422	541
	% CHG. MO.		-3.50%	-4.81%	-1.99%	-14.34%	3.05%								
	% CHG. YR.			-4.15%	-3.30%	-8.84%	-5.45%								

NOTE: The statistics provided throughout this report are a general overview of the monthly traffic trends from approximately 75 permanent traffic monitoring locations throughout the state. For South Dakota's official travel trend, please refer to the annual vehicle miles travel report, which includes data from the permanent traffic monitoring locations in addition to approximately 7,000 short-term count locations.

Station	Direction	Year	Jan	Feb	Mar	Apr	May	Jun	Jul	Aug	Sep	Oct	Nov	Dec	Annual	
301 EAST																
US212 WEST OF BELLE FOURCHE							BUTTE									
# of Days Monitored			29	25	30	28	16									
2025			755	755	936	1,070	1,228								949	
# of Days Monitored			31	27	31	29	29	30	30	31	29	31	28	31	1,124	
2024			817	889	952	1,066	1,305	1,345	1,407	1,341	1,278	1,201	1,026	857		
% CHG. MO.			-7.59%	-15.07%	-1.68%	0.38%	-5.90%									
% CHG. YR.				-11.49%	-8.15%	-0.59%	-3.08%									
301 WEST																
US212 WEST OF BELLE FOURCHE							BUTTE									
# of Days Monitored			29	25	30	28	16									
2025			723	739	927	1,022	1,149								912	
# of Days Monitored			31	27	31	29	29	30	30	31	29	31	28	31	1,119	
2024			810	905	966	1,028	1,188	1,262	1,398	1,375	1,310	1,276	1,058	849		
% CHG. MO.			-10.74%	-18.34%	-4.04%	-0.58%	-3.28%									
% CHG. YR.				-14.75%	-10.96%	-2.26%	-2.03%									
302 NORTH																
US85 WY BORDER-SW OF CHEYENNE CROSSING							LAWRENCE									
# of Days Monitored			12	14	26	20	15									
2025			118	139	141	166	236								160	
# of Days Monitored			11	23	24	18	29	28	30	26	30	31	28	22	227	
2024			116	140	136	159	255	307	357	377	324	241	168	142		
% CHG. MO.			1.72%	-0.71%	3.68%	4.40%	-7.45%									
% CHG. YR.				0.39%	1.45%	4.07%	-2.90%									
302 SOUTH																
US85 WY BORDER-SW OF CHEYENNE CROSSING							LAWRENCE									
# of Days Monitored			12	14	26	20	15									
2025			105	133	146	163	249								159	
# of Days Monitored			11	23	24	18	29	28	30	26	30	31	28	22	223	
2024			104	128	142	156	264	332	349	350	307	234	168	142		
% CHG. MO.			0.96%	3.91%	2.82%	4.49%	-5.68%									
% CHG. YR.				2.59%	3.33%	3.69%	-1.90%									

NOTE: The statistics provided throughout this report are a general overview of the monthly traffic trends from approximately 75 permanent traffic monitoring locations throughout the state. For South Dakota's official travel trend, please refer to the annual vehicle miles travel report, which includes data from the permanent traffic monitoring locations in addition to approximately 7,000 short-term count locations.

Station	Direction	Year	Jan	Feb	Mar	Apr	May	Jun	Jul	Aug	Sep	Oct	Nov	Dec	Annual
304 EAST															
US18 WEST OF EDGEMONT								FALL RIVER							
# of Days Monitored			25	24	16	27	29								
2025			377	388	502	551	724								508
# of Days Monitored			30	22	31	26	30	23	31	31	28	26	26	28	
2024			374	388	501	539	762	956	1,013	863	843	717	508	453	660
% CHG. MO.			0.80%	0%	0.20%	2.23%	-4.99%								
% CHG. YR.				0.39%	0.11%	1.25%	-2%								
304 WEST															
US18 WEST OF EDGEMONT								FALL RIVER							
# of Days Monitored			25	24	16	27	29								
2025			381	379	542	580	772								531
# of Days Monitored			30	22	31	26	30	23	31	31	28	26	26	28	
2024			382	394	495	586	807	993	1,055	940	787	669	499	443	671
% CHG. MO.			-0.26%	-3.81%	9.49%	-1.02%	-4.34%								
% CHG. YR.				-2.06%	3.60%	3.79%	-2.94%								
305 EAST															
US18 SW OF BATESLAND								SHANNON							
# of Days Monitored			27	26	29	29	30								
2025			490	511	530	575	563								534
# of Days Monitored			29	28	27	27	29	25	24	30	29	28	28	29	
2024			487	531	540	571	566	525	570	614	586	583	549	509	553
% CHG. MO.			0.62%	-3.77%	-1.85%	0.70%	-0.53%								
% CHG. YR.				-1.67%	-2.80%	-0.54%	0.09%								
305 WEST															
US18 SW OF BATESLAND								SHANNON							
# of Days Monitored			27	26	29	29	30								
2025			512	547	549	598	588								559
# of Days Monitored			29	28	27	27	29	25	24	30	29	28	28	29	
2024			502	561	563	593	592	551	597	647	614	609	565	528	577
% CHG. MO.			1.99%	-2.50%	-2.49%	0.84%	-0.68%								
% CHG. YR.				-0.38%	-2.49%	-0.78%	0.08%								

NOTE: The statistics provided throughout this report are a general overview of the monthly traffic trends from approximately 75 permanent traffic monitoring locations throughout the state. For South Dakota's official travel trend, please refer to the annual vehicle miles travel report, which includes data from the permanent traffic monitoring locations in addition to approximately 7,000 short-term count locations.

Station Direction Year	Jan	Feb	Mar	Apr	May	Jun	Jul	Aug	Sep	Oct	Nov	Dec	Annual
309 NORTH													
US83 NORTH OF HERREID						CAMPBELL							
# of Days Monitored	31	25	26	30	30								
2025	467	409	485	516	551								486
# of Days Monitored	31	29	31	29	28	27	27	31	30	31	30	30	
2024	453	487	432	521	570	596	596	570	565	609	529	480	534
% CHG. MO.	3.09%	-16.02%	12.27%	-0.96%	-3.33%								
% CHG. YR.		-6.81%	-2.72%	5.04%	-2.20%								
309 SOUTH													
US83 NORTH OF HERREID						CAMPBELL							
# of Days Monitored	31	25	26	30	30								
2025	473	430	526	537	565								506
# of Days Monitored	31	29	31	29	28	27	27	31	30	31	30	30	
2024	474	504	479	581	602	656	628	609	564	578	515	487	556
% CHG. MO.	-0.21%	-14.68%	9.81%	-7.57%	-6.15%								
% CHG. YR.		-7.67%	-2.75%	0.28%	-6.85%								
311 EAST													
US14 EAST OF HARROLD						HUGHES							
# of Days Monitored	30	28	31	30	31								
2025	507	550	594	677	760								618
# of Days Monitored	30	28	30	29	29	29	29	31	30	31	30	30	
2024	508	551	575	640	741	790	770	813	784	795	692	584	687
% CHG. MO.	-0.20%	-0.18%	3.30%	5.78%	2.56%								
% CHG. YR.		-0.19%	1.60%	4.61%	4.06%								
311 WEST													
US14 EAST OF HARROLD						HUGHES							
# of Days Monitored	30	28	31	30	31								
2025	528	569	614	688	727								625
# of Days Monitored	30	28	30	29	29	29	29	31	30	31	30	30	
2024	506	575	592	660	749	787	781	830	801	813	699	599	699
% CHG. MO.	4.35%	-1.04%	3.72%	4.24%	-2.94%								
% CHG. YR.		1.48%	1.37%	3.99%	0.43%								

NOTE: The statistics provided throughout this report are a general overview of the monthly traffic trends from approximately 75 permanent traffic monitoring locations throughout the state. For South Dakota's official travel trend, please refer to the annual vehicle miles travel report, which includes data from the permanent traffic monitoring locations in addition to approximately 7,000 short-term count locations.

Station Direction Year	Jan	Feb	Mar	Apr	May	Jun	Jul	Aug	Sep	Oct	Nov	Dec	Annual
317 NORTH													
US281 WEST OF FREDRICK						BROWN							
# of Days Monitored	31	28	31	30	31								
2025	722	745	637	967	797								774
# of Days Monitored	31	29	31	29	29	28	29	31	30	31	30	30	
2024	582	622	671	794	831	886	862	903	878	884	788	715	785
% CHG. MO.	24.05%	19.77%	-5.07%	21.79%	-4.09%								
% CHG. YR.		21.84%	6.88%	9.49%	8.55%								
317 SOUTH													
US281 WEST OF FREDRICK						BROWN							
# of Days Monitored	31	28	31	30	31								
2025	726	746	634	968	797								774
# of Days Monitored	31	29	31	29	29	28	29	31	30	31	30	30	
2024	581	616	661	780	824	880	880	926	892	906	806	722	790
% CHG. MO.	24.96%	21.10%	-4.08%	24.10%	-3.28%								
% CHG. YR.		22.97%	8.07%	11.17%	10.04%								
319 NORTH													
US85 CASTLEROCK						BUTTE							
# of Days Monitored	22	24	28	29	30								
2025	391	393	428	481	569								452
# of Days Monitored	31	28	29	28	28	23	29	29	29	30	27	27	
2024	394	392	437	486	573	653	663	638	622	577	476	436	529
% CHG. MO.	-0.76%	0.26%	-2.06%	-1.03%	-0.70%								
% CHG. YR.		-0.25%	-0.97%	-1.52%	-0.85%								
319 SOUTH													
US85 CASTLEROCK						BUTTE							
# of Days Monitored	22	24	28	29	30								
2025	350	433	421	422	530								431
# of Days Monitored	31	28	29	28	28	23	29	29	29	30	27	27	
2024	359	370	409	416	524	607	648	649	615	574	475	444	508
% CHG. MO.	-2.51%	17.03%	2.93%	1.44%	1.15%								
% CHG. YR.		7.41%	9.63%	2.18%	1.28%								

NOTE: The statistics provided throughout this report are a general overview of the monthly traffic trends from approximately 75 permanent traffic monitoring locations throughout the state. For South Dakota's official travel trend, please refer to the annual vehicle miles travel report, which includes data from the permanent traffic monitoring locations in addition to approximately 7,000 short-term count locations.

Station Direction Year	Jan	Feb	Mar	Apr	May	Jun	Jul	Aug	Sep	Oct	Nov	Dec	Annual
323 EAST													
SD34 WEST OF UNION CENTER						MEADE							
# of Days Monitored	23	24	16	20	30								
2025	348	363	384	485	504								417
# of Days Monitored	26	28	31	20	27	27	29	31	30	31	30	30	
2024	353	387	407	484	530	552	556	602	564	572	495	452	496
% CHG. MO.	-1.42%	-6.20%	-5.65%	0.21%	-4.91%								
% CHG. YR.		-3.92%	-5.92%	-2.47%	-2.47%								
323 WEST													
SD34 WEST OF UNION CENTER						MEADE							
# of Days Monitored	23	24	16	20	30								
2025	294	312	332	414	449								360
# of Days Monitored	26	28	31	20	27	27	29	31	30	31	30	30	
2024	307	327	363	421	464	511	509	537	506	452	410	391	433
% CHG. MO.	-4.23%	-4.59%	-8.54%	-1.66%	-3.23%								
% CHG. YR.		-4.42%	-6.67%	-4.85%	-2.49%								
326 EAST													
US212 EAST OF RIDGEVIEW						DEWEY							
# of Days Monitored	23	23	26	14	31								
2025	217	222	248	215	295								239
# of Days Monitored	24	25	28	16	18	23	20	30	25	30	28	25	
2024	198	207	235	249	303	343	346	345	321	349	317	263	290
% CHG. MO.	9.60%	7.25%	5.53%	-13.65%	-2.64%								
% CHG. YR.		8.40%	6.33%	-4.34%	-7.61%								
326 WEST													
US212 EAST OF RIDGEVIEW						DEWEY							
# of Days Monitored	23	23	26	14	31								
2025	231	227	267	228	337								258
# of Days Monitored	24	25	28	16	18	23	20	30	25	30	28	25	
2024	217	249	266	269	328	374	373	365	335	346	337	271	311
% CHG. MO.	6.45%	-8.84%	0.38%	-15.24%	2.74%								
% CHG. YR.		-1.72%	-4.08%	-7.48%	-5.36%								

NOTE: The statistics provided throughout this report are a general overview of the monthly traffic trends from approximately 75 permanent traffic monitoring locations throughout the state. For South Dakota's official travel trend, please refer to the annual vehicle miles travel report, which includes data from the permanent traffic monitoring locations in addition to approximately 7,000 short-term count locations.



Station	Direction	Year	Jan	Feb	Mar	Apr	May	Jun	Jul	Aug	Sep	Oct	Nov	Dec	Annual
327 EAST															
	US12 WEST OF MCLAUGHLIN														
	# of Days Monitored		25			30	31								
	2025		157	*	*	178	219								185
	# of Days Monitored		29	22	23	22	28	27	28	26	28	29	24	20	
	2024		169	145	164	180	211	203	182	197	224	240	205	158	190
	% CHG. MO.		-7.10%			-1.11%	3.79%								
	% CHG. YR.						1.53%								
327 WEST															
	US12 WEST OF MCLAUGHLIN														
	# of Days Monitored		25			30	31								
	2025		163	*	*	184	231								193
	# of Days Monitored		29	22	23	22	28	27	28	26	28	29	24	20	
	2024		171	154	166	184	216	221	202	212	236	241	210	165	198
	% CHG. MO.		-4.68%			0%	6.94%								
	% CHG. YR.						3.75%								
331 EAST															
	US12 EAST OF BOWDLE														
	# of Days Monitored		31	28	29	13	23								
	2025		416	399	487	447	520								454
	# of Days Monitored		31	29	30	29	27	28	31	30	29	31	30	29	
	2024		465	532	508	575	563	554	518	568	557	565	511	454	531
	% CHG. MO.		-10.54%	-25%	-4.13%	-22.26%	-7.64%								
	% CHG. YR.			-18.25%	-14.81%	-13.76%	-15.03%								
331 WEST															
	US12 EAST OF BOWDLE														
	# of Days Monitored		31	28	29	13	23								
	2025		527	489	637	571	715								588
	# of Days Monitored		31	29	30	29	27	28	31	30	29	31	30	29	
	2024		553	598	567	644	771	789	753	784	740	755	665	563	682
	% CHG. MO.		-4.70%	-18.23%	12.35%	-11.34%	-7.26%								
	% CHG. YR.			-11.73%	-3.35%	-0.25%	-9.12%								

NOTE: The statistics provided throughout this report are a general overview of the monthly traffic trends from approximately 75 permanent traffic monitoring locations throughout the state. For South Dakota's official travel trend, please refer to the annual vehicle miles travel report, which includes data from the permanent traffic monitoring locations in addition to approximately 7,000 short-term count locations.

Station	Direction	Year	Jan	Feb	Mar	Apr	May	Jun	Jul	Aug	Sep	Oct	Nov	Dec	Annual
801 NORTH															
SD37 NORTH OF PARKSTON								HUTCHINSON							
# of Days Monitored			30	28	31	29	31								
2025			1,459	1,512	1,597	1,778	1,837								1,637
# of Days Monitored			31	29	31	30	31	30	31	31	29	31	30	31	
2024			1,271	1,528	1,472	1,660	1,802	1,915	1,803	1,848	1,814	1,824	1,688	1,581	1,684
% CHG. MO.			14.79%	-1.05%	8.49%	7.11%	1.94%								
% CHG. YR.				6.15%	3.63%	7.76%	4.42%								
801 SOUTH															
SD37 NORTH OF PARKSTON								HUTCHINSON							
# of Days Monitored			30	28	31	29	31								
2025			1,457	1,508	1,593	1,765	1,833								1,631
# of Days Monitored			31	29	31	30	31	30	31	31	29	31	30	31	
2024			1,267	1,540	1,473	1,668	1,797	1,895	1,812	1,855	1,838	1,850	1,705	1,589	1,691
% CHG. MO.			15%	-2.08%	8.15%	5.82%	2%								
% CHG. YR.				5.63%	2.92%	6.91%	3.84%								
802 EAST															
US18 EAST OF MISSION								TODD							
# of Days Monitored			31	28	31	30	31								
2025			528	544	607	673	707								612
# of Days Monitored			29	29	31	30	31	30	31	31	30	31	30	30	
2024			499	570	583	616	727	729	705	727	697	704	653	581	649
% CHG. MO.			5.81%	-4.56%	4.12%	9.25%	-2.75%								
% CHG. YR.				0.28%	-0.17%	6.76%	2.76%								
802 WEST															
US18 EAST OF MISSION								TODD							
# of Days Monitored			31	28	31	30	31								
2025			529	547	600	646	687								602
# of Days Monitored			29	29	31	30	31	30	31	31	30	31	30	30	
2024			502	574	586	603	722	731	734	735	709	713	655	587	654
% CHG. MO.			5.38%	-4.70%	2.39%	7.13%	-4.85%								
% CHG. YR.				0%	-1.12%	4.79%	0.60%								

NOTE: The statistics provided throughout this report are a general overview of the monthly traffic trends from approximately 75 permanent traffic monitoring locations throughout the state. For South Dakota's official travel trend, please refer to the annual vehicle miles travel report, which includes data from the permanent traffic monitoring locations in addition to approximately 7,000 short-term count locations.

Station	Direction	Year	Jan	Feb	Mar	Apr	May	Jun	Jul	Aug	Sep	Oct	Nov	Dec	Annual
804 NORTH															
US83 NORTH OF AGAR								SULLY							
# of Days Monitored			31	26	30	30	31								
2025			460	452	517	552	586								513
# of Days Monitored			29	29	31	28	31	30	31	31	30	30	29	31	
2024			444	496	511	561	594	695	653	635	605	634	555	491	573
% CHG. MO.			3.60%	-8.87%	1.17%	-1.60%	-1.35%								
% CHG. YR.				-2.98%	-3.77%	-0.28%	-1.47%								
804 SOUTH															
US83 NORTH OF AGAR								SULLY							
# of Days Monitored			31	26	30	30	31								
2025			461	444	486	511	559								492
# of Days Monitored			29	29	31	28	31	30	31	31	30	30	29	31	
2024			483	541	557	544	582	662	651	624	610	646	572	501	581
% CHG. MO.			-4.55%	-17.93%	-12.75%	-6.07%	-3.95%								
% CHG. YR.				-11.62%	-15.30%	-9.45%	-4.97%								
811 NORTH															
US85 SOUTH OF BELLE FOURCHE								BUTTE							
# of Days Monitored			31	28	15	30	30								
2025			3,550	3,710	4,106	4,259	4,486								4,022
# of Days Monitored			29	28	31	30	31	14	30	30	29	31	28	31	
2024			3,698	3,789	3,939	4,138	4,506	4,878	5,141	4,856	4,577	4,429	4,048	3,869	4,322
% CHG. MO.			-4%	-2.08%	4.24%	2.92%	-0.44%								
% CHG. YR.				-3.03%	1.14%	3.57%	1.17%								
811 SOUTH															
US85 SOUTH OF BELLE FOURCHE								BUTTE							
# of Days Monitored			31	28	15	30	30								
2025			3,596	3,786	4,131	4,276	4,653								4,088
# of Days Monitored			29	28	31	30	31	14	30	30	29	31	28	31	
2024			3,751	3,880	4,013	4,188	4,580	4,982	5,356	5,169	4,788	4,590	4,158	3,983	4,453
% CHG. MO.			-4.13%	-2.42%	2.94%	2.10%	1.59%								
% CHG. YR.				-3.26%	0.30%	2.51%	1.84%								

NOTE: The statistics provided throughout this report are a general overview of the monthly traffic trends from approximately 75 permanent traffic monitoring locations throughout the state. For South Dakota's official travel trend, please refer to the annual vehicle miles travel report, which includes data from the permanent traffic monitoring locations in addition to approximately 7,000 short-term count locations.

Station	Direction	Year	Jan	Feb	Mar	Apr	May	Jun	Jul	Aug	Sep	Oct	Nov	Dec	Annual
903 EAST															
	US12 WEST OF GROTON							BROWN							
	# of Days Monitored		31	28	29	30	29								
	2025		2,484	2,516	2,787	2,998	3,305								2,818
	# of Days Monitored		31	29	31	30	31	30	31	31	30	28	30	31	
	2024		2,500	2,580	2,654	2,888	3,093	3,158	3,098	3,152	3,126	3,174	2,880	2,658	2,913
	% CHG. MO.		-0.64%	-2.48%	5.01%	3.81%	6.85%								
	% CHG. YR.			-1.57%	1.32%	4.38%	5.38%								
903 WEST															
	US12 WEST OF GROTON							BROWN							
	# of Days Monitored		31	28	29	30	29								
	2025		2,468	2,492	2,790	3,019	3,289								2,812
	# of Days Monitored		31	29	31	30	31	30	31	31	30	28	30	31	
	2024		2,426	2,503	2,547	2,816	3,025	3,082	3,042	3,082	3,011	3,100	2,860	2,620	2,843
	% CHG. MO.		1.73%	-0.44%	9.54%	7.21%	8.73%								
	% CHG. YR.			0.63%	4.59%	8.32%	8%								
909 EAST															
	US14 WEST OF MANCHESTER							KINGSBURY							
	# of Days Monitored		31	28	31	30	30								
	2025		698	709	747	852	921								785
	# of Days Monitored		30	29	31	30	31	29	31	31	29	31	30	31	
	2024		641	688	697	787	891	962	962	1,042	998	929	820	723	845
	% CHG. MO.		8.89%	3.05%	7.17%	8.26%	3.37%								
	% CHG. YR.			5.87%	5.13%	7.75%	5.66%								
909 WEST															
	US14 WEST OF MANCHESTER							KINGSBURY							
	# of Days Monitored		31	28	31	30	30								
	2025		692	714	750	844	927								785
	# of Days Monitored		30	29	31	30	31	29	31	31	29	31	30	31	
	2024		630	684	705	785	904	950	979	1,091	954	930	839	729	848
	% CHG. MO.		9.84%	4.39%	6.38%	7.52%	2.54%								
	% CHG. YR.			7%	5.40%	6.98%	4.85%								

NOTE: The statistics provided throughout this report are a general overview of the monthly traffic trends from approximately 75 permanent traffic monitoring locations throughout the state. For South Dakota's official travel trend, please refer to the annual vehicle miles travel report, which includes data from the permanent traffic monitoring locations in addition to approximately 7,000 short-term count locations.

Station Direction Year	Jan	Feb	Mar	Apr	May	Jun	Jul	Aug	Sep	Oct	Nov	Dec	Annual
922 EAST													
US14 WEST OF JCT US14 & 83						HUGHES							
# of Days Monitored	31	28	31	30	31								
2025	1,190	1,240	1,346	1,351	1,497								1,325
# of Days Monitored	31	29	31	30	31	30	31	31	30	31	16	28	
2024	1,193	1,220	1,241	1,374	1,561	1,639	1,648	1,626	1,542	1,554	1,487	1,312	1,450
% CHG. MO.	-0.25%	1.64%	8.46%	-1.67%	-4.10%								
% CHG. YR.		0.70%	5.08%	3.14%	-2.96%								
923 WEST													
US14 EAST OF JCT US14 & 83						HUGHES							
# of Days Monitored	31	28	30	30									
2025	781	825	893	913	*								853
# of Days Monitored	31	29	31	30	31	30	30	29	30	31	30	28	
2024	786	809	805	920	1,082	1,126	1,140	1,139	1,088	1,128	980	877	990
% CHG. MO.	-0.64%	1.98%	10.93%	-0.76%									
% CHG. YR.		0.69%	6.44%	4.70%									
924 SOUTH													
US83 North of Jct US14 & 83						HUGHES							
# of Days Monitored	15	24	31	22	31								
2025	619	637	735	785	865								728
# of Days Monitored	31	29	31	30	31	29	31	29	30	31	11		
2024	673	668	673	736	820	889	885	901	867	969	865	*	813
% CHG. MO.	-8.02%	-4.64%	9.21%	6.66%	5.49%								
% CHG. YR.		-6.34%	2.31%	7.88%	6.04%								
Urban Collector													
602 EAST													
IN SIOUX FALLS ON 18 ST						MINNEHAHA							
# of Days Monitored	31	28	31	27	30								
2025	3,271	3,353	3,471	3,462	3,606								3,433
# of Days Monitored	31	28	26	21	15	30	31	31	30	31	26	31	
2024	3,326	3,550	3,559	3,312	3,360	3,495	3,511	3,573	3,680	3,692	3,351	3,268	3,473
% CHG. MO.	-1.65%	-5.55%	-2.47%	4.53%	7.32%								
% CHG. YR.		-3.66%	-4.01%	0.90%	5.94%								

NOTE: The statistics provided throughout this report are a general overview of the monthly traffic trends from approximately 75 permanent traffic monitoring locations throughout the state. For South Dakota's official travel trend, please refer to the annual vehicle miles travel report, which includes data from the permanent traffic monitoring locations in addition to approximately 7,000 short-term count locations.

Station	Direction	Year	Jan	Feb	Mar	Apr	May	Jun	Jul	Aug	Sep	Oct	Nov	Dec	Annual
602 WEST															
	IN SIOUX FALLS ON 18 ST							MINNEHAHA							
	# of Days Monitored		31	28	31	27	30								
	2025		3,319	4,278	3,669	3,953	3,631								3,770
	# of Days Monitored		31	28	26	21	15	30	31	31	30	31	26	31	
	2024		3,291	3,491	4,201	4,161	3,427	3,356	3,422	3,521	3,665	3,642	3,399	3,286	3,572
	% CHG. MO.		0.85%	22.54%	-12.66%	-5%	5.95%								
	% CHG. YR.			12.02%	3.32%	-8.85%	-0.05%								
613 EAST															
	IN RAPID CITY ON ANAMOSA ST.							PENNINGTON							
	# of Days Monitored		31	28	29	29	31								
	2025		3,424	3,647	3,914	3,953	4,120								3,812
	# of Days Monitored		29	28	29	29	30	29	29	27	29	31	28	30	
	2024		3,767	3,925	4,001	3,963	4,218	4,212	4,092	4,094	4,073	4,087	3,796	3,938	4,014
	% CHG. MO.		-9.11%	-7.08%	-2.17%	-0.25%	-2.32%								
	% CHG. YR.			-8.07%	-4.61%	-1.22%	-1.32%								
613 WEST															
	IN RAPID CITY ON ANAMOSA ST.							PENNINGTON							
	# of Days Monitored		31	28	29	29	31								
	2025		3,593	3,795	4,069	4,133	4,238								3,966
	# of Days Monitored		29	28	29	29	30	29	29	27	29	31	28	30	
	2024		4,034	4,186	4,187	4,196	4,339	4,420	4,218	4,283	4,265	4,307	3,944	4,146	4,210
	% CHG. MO.		-10.93%	-9.34%	-2.82%	-1.50%	-2.33%								
	% CHG. YR.			-10.12%	-6.08%	-2.16%	-1.92%								
614 EAST															
	IN VERMILLION ON WEST CLARK ST.							CLAY							
	# of Days Monitored		31	28	28	30	31								
	2025		198	209	222	227	219								215
	# of Days Monitored		31	29	29	28	22	30	31	31	30	31	27	30	
	2024		201	203	195	220	206	187	169	200	219	217	192	186	200
	% CHG. MO.		-1.49%	2.96%	13.85%	3.18%	6.31%								
	% CHG. YR.			0.74%	8.29%	8.19%	4.69%								

NOTE: The statistics provided throughout this report are a general overview of the monthly traffic trends from approximately 75 permanent traffic monitoring locations throughout the state. For South Dakota's official travel trend, please refer to the annual vehicle miles travel report, which includes data from the permanent traffic monitoring locations in addition to approximately 7,000 short-term count locations.



Station Direction Year	Jan	Feb	Mar	Apr	May	Jun	Jul	Aug	Sep	Oct	Nov	Dec	Annual
614 WEST													
IN VERMILLION ON WEST CLARK ST.						CLAY							
# of Days Monitored	31	28	28	30	31								
2025	190	199	206	225	221								208
# of Days Monitored	31	29	29	28	22	30	31	31	30	31	27	30	
2024	193	212	204	231	224	200	163	177	194	180	168	182	194
% CHG. MO.	-1.55%	-6.13%	0.98%	-2.60%	-1.34%								
% CHG. YR.		-3.95%	-2.64%	-0.92%	-1.98%								
<b>Urban Minor Arterial</b>													
619 EAST													
IN SIOUX FALLS ON 26TH ST.						MINNEHAHA							
# of Days Monitored	30	27	28	29	30								
2025	5,083	5,243	5,509	6,008	6,257								5,620
# of Days Monitored	14	29	29	29	31	29	31	31	30	31	29	29	
2024	5,117	5,434	5,444	5,649	5,760	5,498	5,431	5,682	5,843	5,762	5,463	5,271	5,530
% CHG. MO.	-0.66%	-3.51%	1.19%	6.36%	8.63%								
% CHG. YR.		-2.13%	-1.16%	3.82%	7.50%								
619 WEST													
IN SIOUX FALLS ON 26TH ST.						MINNEHAHA							
# of Days Monitored	30	27	28	29	30								
2025	5,962	6,124	6,498	7,197	7,603								6,677
# of Days Monitored	14	29	29	29	31	29	31	31	30	31	29	29	
2024	5,909	6,222	6,262	6,609	6,774	6,659	6,471	6,681	6,877	6,760	6,275	6,098	6,466
% CHG. MO.	0.90%	-1.58%	3.77%	8.90%	12.24%								
% CHG. YR.		-0.37%	1.11%	6.40%	10.59%								
<b>Urban Other Principal Arterials</b>													
604 NORTH													
US281 SOUTH OF US12 IN ABERDEEN						BROWN							
# of Days Monitored	30	27	29	30	31								
2025	1,861	1,937	2,120	2,218	2,384								2,104
# of Days Monitored	31	29	29	29	21	29	31	30	30	30	27	31	
2024	1,866	2,008	2,039	2,276	2,508	2,498	2,413	2,450	2,377	2,365	2,143	1,958	2,242
% CHG. MO.	-0.27%	-3.54%	3.97%	-2.55%	-4.94%								
% CHG. YR.		-1.96%	0.25%	0.53%	-3.80%								

NOTE: The statistics provided throughout this report are a general overview of the monthly traffic trends from approximately 75 permanent traffic monitoring locations throughout the state. For South Dakota's official travel trend, please refer to the annual vehicle miles travel report, which includes data from the permanent traffic monitoring locations in addition to approximately 7,000 short-term count locations.

Station	Direction	Year	Jan	Feb	Mar	Apr	May	Jun	Jul	Aug	Sep	Oct	Nov	Dec	Annual
604 SOUTH															
		US281 SOUTH OF US12 IN ABERDEEN						BROWN							
		# of Days Monitored	30	27	29	30	31								
		2025	1,905	1,961	2,151	2,256	2,431								2,141
		# of Days Monitored	31	29	29	29	21	29	31	30	30	30	27	31	
		2024	1,928	2,069	2,067	2,316	2,559	2,515	2,463	2,498	2,427	2,443	2,218	2,033	2,295
		% CHG. MO.	-1.19%	-5.22%	4.06%	-2.59%	-5%								
		% CHG. YR.		-3.28%	-0.58%	0.55%	-3.86%								
605 EAST															
		SD IN SIOUX FALLS ON 10TH ST.						MINNEHAHA							
		# of Days Monitored	31	27	27	30	31								
		2025	10,170	10,319	10,921	10,900	11,257								10,713
		# of Days Monitored	31	29	29	29	30	30	31	31	30	31	28	31	
		2024	10,504	11,488	11,550	12,115	11,515	10,679	10,503	10,701	10,146	10,870	10,548	10,508	10,927
		% CHG. MO.	-3.18%	-10.18%	-5.45%	-10.03%	-2.24%								
		% CHG. YR.		-6.83%	-7.80%	-7.79%	-6.23%								
605 WEST															
		SD IN SIOUX FALLS ON 10TH ST.						MINNEHAHA							
		# of Days Monitored	31	27	27	30	31								
		2025	9,838	10,071	10,554	10,094	10,422								10,196
		# of Days Monitored	31	29	29	29	30	30	31	31	30	31	28	31	
		2024	9,985	10,932	11,093	11,654	11,649	11,231	10,999	10,413	10,156	10,818	10,360	10,160	10,788
		% CHG. MO.	-1.47%	-7.88%	-4.86%	-13.39%	-10.53%								
		% CHG. YR.		-4.82%	-6.36%	-9.23%	-11.96%								
812 NORTH															
		SD79 South of Rapid City						PENNINGTON							
		# of Days Monitored	31	28	31	30	31								
		2025	3,836	3,990	4,416	4,800	5,472								4,503
		# of Days Monitored	23	23	31	30	31	30	31	31	29	31	29	31	
		2024	3,964	4,081	4,331	4,697	5,455	6,113	6,264	6,235	5,774	5,144	4,414	4,341	5,068
		% CHG. MO.	-3.23%	-2.23%	1.96%	2.19%	0.31%								
		% CHG. YR.		-2.72%	-0.07%	2.08%	1.18%								

NOTE: The statistics provided throughout this report are a general overview of the monthly traffic trends from approximately 75 permanent traffic monitoring locations throughout the state. For South Dakota's official travel trend, please refer to the annual vehicle miles travel report, which includes data from the permanent traffic monitoring locations in addition to approximately 7,000 short-term count locations.

Station	Direction	Year	Jan	Feb	Mar	Apr	May	Jun	Jul	Aug	Sep	Oct	Nov	Dec	Annual
812 SOUTH															
SD79 South of Rapid City							PENNINGTON								
# of Days Monitored			31	28	31	30	31								
2025			3,864	4,046	4,452	4,817	5,553								4,546
# of Days Monitored			23	23	31	30	31	30	31	31	29	31	29	31	
2024			4,026	4,129	4,386	4,709	5,501	6,146	6,255	6,253	5,838	5,225	4,491	4,393	5,113
% CHG. MO.			-4.02%	-2.01%	1.50%	2.29%	0.95%								
% CHG. YR.				-3%	-0.20%	1.91%	1.57%								
Urban Principal Arterial Interstate															
193 EAST															
I90 EAST OF SPEARFISH							LAWRENCE								
# of Days Monitored			30	26	28	29	31								
2025			6,216	6,520	7,324	8,525	9,548								7,627
# of Days Monitored			29	29	29	26	31	30	28	28	29	27	28	30	
2024			6,600	6,851	7,193	7,561	8,461	9,954	10,526	11,067	9,499	8,634	7,401	7,075	8,402
% CHG. MO.			-5.82%	-4.83%	1.82%	12.75%	12.85%								
% CHG. YR.				-5.32%	-1.42%	7.42%	12.80%								
193 WEST															
I90 EAST OF SPEARFISH							LAWRENCE								
# of Days Monitored			30	26	28	29	31								
2025			6,324	6,589	7,387	8,645	9,781								7,745
# of Days Monitored			29	29	29	26	31	30	28	28	29	27	28	30	
2024			6,734	6,907	7,239	7,641	8,692	10,134	10,641	11,326	9,554	8,664	7,433	7,128	8,508
% CHG. MO.			-6.09%	-4.60%	2.04%	13.14%	12.53%								
% CHG. YR.				-5.34%	-1.20%	7.74%	12.81%								
610 NORTH															
I229 IN SIOUX FALLS							MINNEHAHA								
# of Days Monitored			31	28	29	30	31								
2025			19,238	19,753	19,996	21,613	21,482								20,416
# of Days Monitored			29	29	25	30	31	30	31	31	30	31	29	31	
2024			18,349	19,057	17,872	21,147	20,802	20,244	20,146	19,138	18,401	19,723	20,033	19,367	19,523
% CHG. MO.			4.84%	3.65%	11.88%	2.20%	3.27%								
% CHG. YR.				4.24%	7.64%	6.64%	2.73%								

NOTE: The statistics provided throughout this report are a general overview of the monthly traffic trends from approximately 75 permanent traffic monitoring locations throughout the state. For South Dakota's official travel trend, please refer to the annual vehicle miles travel report, which includes data from the permanent traffic monitoring locations in addition to approximately 7,000 short-term count locations.

Station Direction Year	Jan	Feb	Mar	Apr	May	Jun	Jul	Aug	Sep	Oct	Nov	Dec	Annual
610 SOUTH													
I229 IN SIOUX FALLS													
MINNEHAHA													
# of Days Monitored	31	28	29	30	31								
2025	23,163	24,651	25,267	26,504	27,004								25,318
# of Days Monitored	29	29	25	30	31	30	31	31	30	31	29	31	
2024	22,153	25,011	25,370	26,363	26,555	26,894	26,384	26,125	25,637	26,154	25,192	23,280	25,426
% CHG. MO.	4.56%	-1.44%	-0.41%	0.53%	1.69%								
% CHG. YR.		1.38%	-0.92%	0.07%	1.11%								
611 EAST													
I90 EAST OF I 190 IN RAPID CITY													
PENNINGTON													
# of Days Monitored	30	28	29	30	30								
2025	15,814	16,627	19,265	19,061	20,208								18,195
# of Days Monitored	31	29	19	23	23	30	19	28	30	31	29	31	
2024	16,719	17,056	18,448	19,313	19,630	21,086	20,786	22,119	21,004	19,976	18,246	17,595	19,332
% CHG. MO.	-5.41%	-2.52%	4.43%	-1.30%	2.94%								
% CHG. YR.		-3.95%	1.09%	1.50%	0.84%								
611 WEST													
I90 EAST OF I 190 IN RAPID CITY													
PENNINGTON													
# of Days Monitored	30	28	29	30	30								
2025	16,720	17,850	19,596	19,809	21,068								19,009
# of Days Monitored	31	29	19	23	23	30	19	28	30	31	29	31	
2024	16,651	16,899	18,319	19,090	20,748	22,141	21,434	21,800	20,451	19,551	17,792	18,603	19,457
% CHG. MO.	0.41%	5.63%	6.97%	3.77%	1.54%								
% CHG. YR.		3.04%	6.33%	5.34%	2.61%								

NOTE: The statistics provided throughout this report are a general overview of the monthly traffic trends from approximately 75 permanent traffic monitoring locations throughout the state. For South Dakota's official travel trend, please refer to the annual vehicle miles travel report, which includes data from the permanent traffic monitoring locations in addition to approximately 7,000 short-term count locations.