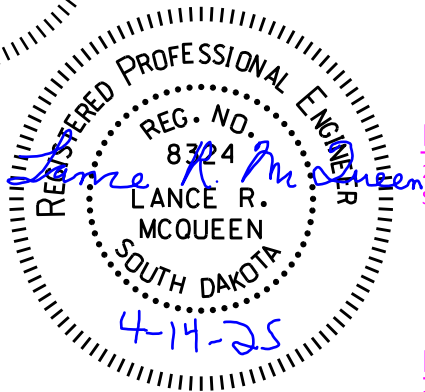
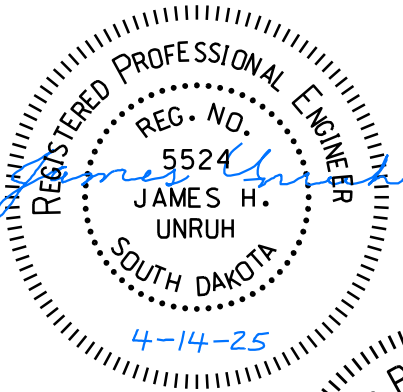
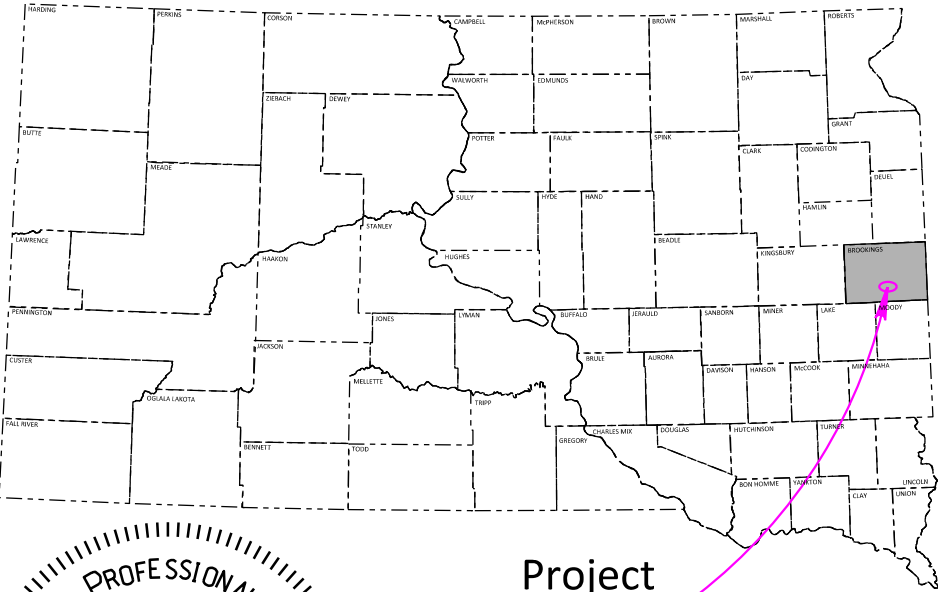


APPENDIX D: DRAFT SECTION A



DESIGN DESIGNATION

	20TH STREET S - 22ND AVE TO I-29	22ND AVE
AADT (2024)	5,000	7,400
AADT (2050)	15,000	15,500
D (P.M. Peak)	10%	10%
DHV (2050)	1,595	1,660
T DHV	4%	3%
T ADT	4%	3%
V	40	40

STORM WATER PERMIT

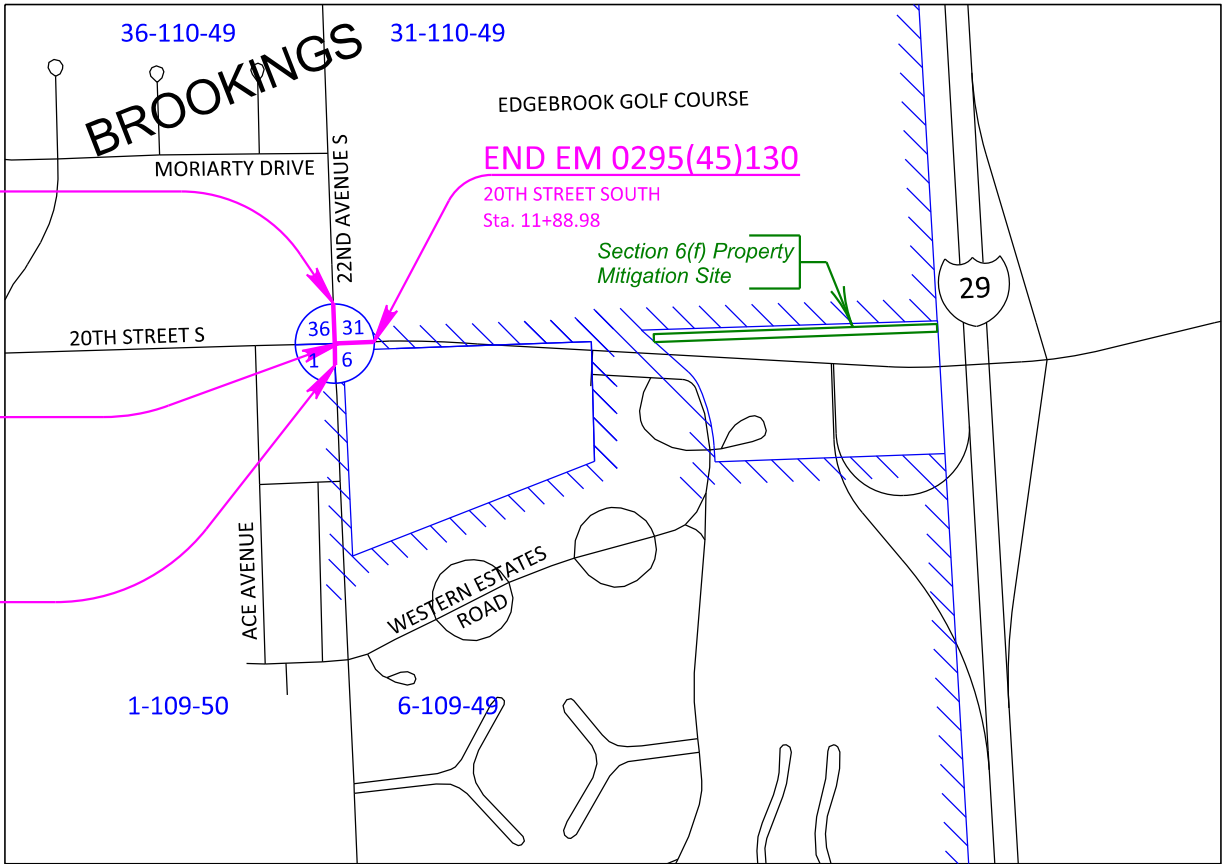
Major Stream: Medary Creek, Big Sioux River
Area Disturbed: 0.37 Acres
Total Project Area: 0.54 Acres
Approx. Begin Lat/Long: 44.2824, -96.7683

STATE OF SOUTH DAKOTA
DEPARTMENT OF TRANSPORTATION
PLANS FOR PROPOSED

PROJECT EM 0295(45)130
20th Street South and 22nd Avenue South
Intersection Expansion
BROOKINGS COUNTY

GRADING, CURB & GUTTER, STORM SEWER, PCC/AC PAVEMENT,
SIDEWALK, PAVEMENT MARKING, SIGNALS, LIGHTING, PERMANENT SIGNING

PCN 0A3L



STATE OF SOUTH DAKOTA	PROJECT	SHEET	TOTAL SHEETS
	EM 0295(45)130	1	68

FILE: ...\\01 (Title)
PLOTING DATE: 04-14-2025

REV DATE:
INITIAL:

LIST OF SHEETS

- 1 Title Sheet & Location Map
- 2-15 Estimate with General Notes and Tables
- 16 Typical Sections
- 17-19 Traffic Control Layout
- 20 Erosion and Sediment Control Legend
- 21 Erosion and Sediment Control Plan
- 22 Horizontal Alignment Data & Control Data
- 23 Topography Legend
- 24 Plan Sheet
- 25 Removal Layout
- 26-27 Curb and Gutter and Curb Ramp Layouts
- 28 Surfacing Plan
- 29 Grading and Site Plan Detail
- 30 Pavement Marking Plan
- 31 Existing Signal Layout
- 32 Signal Layout
- 33 Signal Conduit Layout
- 34 Video Detection Layout
- 35 Signal Timing Diagram
- 36 Signal Wiring Diagram
- 37 Permanent Signing Plan
- 38 Watermain Extension Detail
- 39-62 Standard Plates
- 63-67 Cross Sections
- 68 Pipe Sections

20th Street South Gross Length	143.19 Feet	0.027 Miles
22nd Avenue South Road Gross Length	258.87 Feet	0.049 Miles
Total Net Length	402.06 Feet	0.076 Miles



ENVIRONMENTAL COMMITMENTS

This project (PCN 03AL) is a subsequent phase to PCN 020V for which a FONSI was approved on 1.22.2021. A Supplemental EA has been prepared and approved for PCN 03AL.

The SDDOT is committed to protecting the environment and uses Environmental Commitments as a communication tool for the Engineer and Contractor to ensure that attention is given to avoid, minimize, and/or mitigate an environmental impact. Environmental commitments to various agencies and the public have been made to secure approval of this project. An agency with permitting authority can delay a project if identified environmental impacts have not been adequately addressed. Unless otherwise designated, the Contractor's primary contact regarding matters associated with these commitments will be the Project Engineer. During construction, the Project Engineer will verify that the Contractor has met Environmental Commitment requirements. These environmental commitments are not subject to change without prior written approval from the SDDOT Environmental Office.

Additional guidance on SDDOT's Environmental Commitments can be accessed through the Environmental Procedures Manual found at: <<https://dot.sd.gov/media/documents/EnvironmentalProceduresManual.pdf>>

For questions regarding change orders in the field that may have an effect on an Environmental Commitment, the Project Engineer will contact the Environmental Engineer at 605-773-3180 or 605-773-4336 to determine whether an environmental analysis and/or resource agency coordination is necessary.

Once construction is complete, the Project Engineer will review all environmental commitments for the project and document their completion.

COMMITMENT C: WATER SOURCE

The Contractor will not withdraw water with equipment previously used outside the State of South Dakota or previously used in aquatic invasive species (AIS) positive waters within South Dakota without prior approval from the SDDOT Environmental Office. To prevent and control the introduction and spread of invasive species into the project vicinity, all equipment will be power washed with hot water (≥140 °F) and completely dried for a minimum of 7 days prior to subsequent use. South Dakota administrative rule 41:10:04:02 forbids the possession and transport of AIS; therefore, all attached dirt, mud, debris and vegetation must be removed and all compartments and tanks capable of holding standing water must be drained. This includes, but is not limited to, all equipment, pumps, lines, hoses and holding tanks.

Action Taken/Required:

The Contractor will obtain the necessary permits from the regulatory agencies such as the South Dakota Department of Agriculture and Natural Resources (DANR) and the United States Army Corps of Engineers (USACE) prior to water extraction activities.

Additional information and mapping of water sources impacted by Aquatic Invasive Species in South Dakota can be accessed at: < <https://sdleastwanted.sd.gov/maps/default.aspx>>

< [South Dakota Administrative Rule 41:10:04 Aquatic Invasive Species: https://sdlegislature.gov/rules/DisplayRule.aspx?Rule=41:10:04](https://sdlegislature.gov/rules/DisplayRule.aspx?Rule=41:10:04) >

COMMITMENT E: STORM WATER

Construction activities constitute less than 1 acre of disturbance.

Action Taken/Required:

At a minimum and regardless of project size, appropriate erosion and sediment control measures must be installed to control the discharge of pollutants from the construction site.

COMMITMENT H: WASTE DISPOSAL SITE

The Contractor will furnish a site(s) for the disposal of construction and/or demolition debris generated by this project.

Action Taken/Required:

Construction and/or demolition debris may not be disposed of within the Public ROW.

The waste disposal site(s) will be managed and reclaimed in accordance with the following from the General Permit for Construction/Demolition Debris Disposal Under the South Dakota Waste Management Program issued by the Department of Agriculture and Natural Resources.

The waste disposal site(s) will not be located in a wetland, within 200 feet of surface water, or in an area that adversely affects wildlife, recreation, aesthetic value of an area, or any threatened or endangered species, as approved by the Environmental Office and the Project Engineer.

If the waste disposal site(s) is located such that it is within view of any ROW, the following additional requirements will apply:

1. Construction and/or demolition debris consisting of concrete, asphalt concrete, or other similar materials will be buried in a trench separate from wood debris. The final cover over the construction and/or demolition debris will consist of a minimum of 1 foot of soil capable of supporting vegetation. Waste disposal sites provided outside of the Public ROW will be seeded in accordance with Natural Resources Conservation Service recommendations. The seeding recommendations may be obtained through the appropriate County NRCS Office. The Contractor will control the access to waste disposal sites not within the Public ROW with fences, gates, and placement of a sign or signs at the entrance to the site stating, "No Dumping Allowed".

2. Concrete and asphalt concrete debris may be stockpiled within view of the ROW for a period not to exceed the duration of the project. Prior to project completion, the waste will be removed from view of the ROW or buried, and the waste disposal site reclaimed as noted above.

The above requirements will not apply to waste disposal sites that are covered by an individual solid waste permit as specified in SDCL 34A-6-58, SDCL 34A-6-1.13, and ARSD 74:27:10:06. Failure to comply with the requirements stated above may result in civil penalties in accordance with South Dakota Solid Waste Law, SDCL 34A-6-1.31.

All costs associated with furnishing waste disposal site(s), disposing of waste, maintaining control of access (fence, gates, and signs), and reclamation of the waste disposal site(s) will be incidental to the various contract items.

STATE OF SOUTH DAKOTA	PROJECT	SHEET	TOTAL SHEETS
	EM 0295(45)130	2	68

Plotting Date: 5/27/2025

COMMITMENT I: HISTORIC PRESERVATION OFFICE CLEARANCES

The SDDOT has obtained concurrence with the State Historic Preservation Office (SHPO or THPO) for all work included within the project limits and all department designated sources and designated option material sources, stockpile sites, storage areas, and waste sites provided within the plans.

Action Taken/Required:

All earth disturbing activities not designated within the plans require a cultural resource review prior to scheduling the pre-construction meeting. This work includes but is not limited to: Contractor furnished material sources, material processing sites, stockpile sites, storage areas, plant sites, and waste areas.

The Contractor will arrange and pay for a record search and when necessary, a cultural resource survey. The Contractor has the option to contact the state Archaeological Research Center (ARC) at 605-394-1936 or another qualified archaeologist, to obtain either a records search or a cultural resources survey. A record search might be sufficient for review if the site was previously surveyed; however, a cultural resources survey may need to be conducted by a qualified archaeologist.

The Contractor will provide ARC with the following: a topographical map or aerial view in which the site is clearly outlined, site dimensions, project number, and PCN. If applicable, provide evidence that the site has been previously disturbed by farming, mining, or construction activities with a landowner statement that artifacts have not been found on the site.

The Contractor will submit the cultural resources survey report to SDDOT Environmental Office, 700 East Broadway Avenue, Pierre, SD 57501-2586. SDDOT will submit the information to the appropriate SHPO/THPO. Allow **30 Days** from the date this information is submitted to the Environmental Engineer for SHPO/THPO review.

In the event of an inadvertent discovery of human remains, funerary objects, or if evidence of cultural resources is identified during project construction activities, then such activities within 100 feet of the inadvertent discovery will immediately cease and the Project Engineer will be immediately notified. The Project Engineer will contact the SDDOT Environmental Office, who will contact the appropriate SHPO/THPO within 48 hours of the discovery to determine an appropriate course of action.

SHPO/THPO review does not relieve the Contractor of the responsibility for obtaining any additional permits and clearances for Contractor furnished material sources, material processing sites, stockpile sites, storage areas, plant sites, and waste areas that affect wetlands, threatened and endangered species, or waterways. The Contractor will not utilize a site known or suspected of having contaminated soil or water. The Contractor will provide the required permits and clearances to the Project Engineer at the preconstruction meeting.

COMMITMENT M: SECTION 4(f)/6(f) RESOURCES

COMMITMENT M1: SECTION 4(f) PROPERTY

A Section 4(f) Evaluation concluded there are no feasible and prudent alternatives to avoiding Section 4(f) property located within the project.

Station	Section 4(f) Property
22 nd Avenue 506+20 to 507+60 R	Allyn Frerichs Trail
10+00 to 37+00 L	Edgebrook Golf Course

Action Taken/Required:

The following measures are required to minimize harm to the above Section 4(f) property:

A trail detour will be provided for both the north and south of 20th Street trail segments. Appropriate signage will be installed to alert users of the Allyn Frerichs Trail of construction activities, access restrictions or closures, and to direct users to secondary access points. See the Pedestrian Detour Layout plan sheet.

The Contractor is not permitted to stage equipment or materials within the Allyn Frerichs Trail or the Edgebrook Golf Course.

The land being used will be fully restored and returned to a condition which is at least as good as that which existed prior to the project. Revegetation and landscaping within the temporary grading areas will occur.

The Contractor will notify the Project Engineer if additional easement is needed to complete the work adjacent to any Section 4(f) property. The Project Engineer will obtain an appropriate course of action from the Environmental Office before proceeding with construction activities that affect any Section 4(f) property.

COMMITIMENT M2: SECTION 6(f) PROPERTY

South Dakota Department of Game, Fish and Parks concurrence has been obtained for project impacts to the following resource acquired and developed through a Land and Water Conservation Fund grant.

Station	Section 6(f) Property
22 nd Ave 506+20 to 507+60 R	Edgebrook Golf Course

Action Taken/Required:

The impacted area of the Edgebrook Golf Course in the northeast quadrant of the 20th Street / 22nd Avenue intersection is being mitigated by replacement property of equal or greater usefulness and value along the south edge of the golf course approximately 1,500 feet east of the intersection.

The Contractor is not permitted to stage equipment or materials within the Edgebrook Golf Course.

The Contractor will notify the Project Engineer if additional easement is needed to complete the work adjacent to any Section 6(f) property. The Project Engineer will obtain an appropriate course of action from the Environmental Office before proceeding with construction activities that affect any Section 6(f) property.

Pedestrian Detour Layout

STATE OF
SOUTH
DAKOTA

PROJECT
EM 0295(45)130

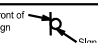
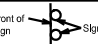
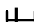

SHEET
19

TOTAL
SHEETS
68

FILE: ...19 traffic control detour.dgn
PLOTING DATE: 04-14-2025

REV DATE:
INITIAL:

SCALE IN FEET
0 75 150

LEGEND	
KEY	ITEM
-----	DETOUR ROUTE
Front of Sign 	SIGN LOCATION / ORIENTATION
Front of Sign 	DOUBLE POST - SIGN LOCATION / ORIENTATION
	LONGITUDINAL PEDESTRIAN BARRICADE
	CONSTRUCTED IN CURRENT PHASE

